



can-am

219201274

CANAMSPYDER.COM

ACCESSORIES, RIDING GEAR & GENUINE PARTS



2019 CAN-AM SPYDER

ACCESSORIES, RIDING GEAR & GENUINE PARTS

SPYDER JOY OF THREE™ / 2019



can-am



CAN-AM ON-ROAD. INSPIRED BY YOU.

More than mere accessories, the Can-Am On-Road customization experience is part of a unique lifestyle. Transform, break free, and ride along the edge of comfort & excitement with a look & feel you can call your own.

As ever, we’ve gone further to ensure that everyone who wakes up mornings hoping to enjoy the Can-Am On-Road experience feels included. We count on the opinions of thousands of open-road enthusiasts. They power our innovation, and inspire us to create better, more compelling products.

Designed for men and women alike, we’ve got something for every rider and every style of ride. If it’s comfort and fashion you’re looking for, or simply want the ultimate in personalized style and performance, then you’ve arrived. It’s all here, easy to understand and even easier to love. Can-Am On-Road: gear up for an unforgettable year of exploration and exhilaration.

We may build it, but it’s fueled by your imagination. Welcome to the all-new, all-yours, ultra-enhanced Can-Am On-Road. Visit us online at canamspyder.com/shop or visit your local dealer and start enhancing your experience today.



© 2018 Bombardier Recreational Products Inc. (BRP). All rights reserved. ®, ™ and the BRP logo are trademarks of BRP or its affiliates. 3M and SCOTCHLITE are trademarks of 3M Company. BLUETOOTH is a registered trademark of Bluetooth SIG. CLARINO is a trademark of Kuraray Co. Ltd. FOX and PODIUM are trademarks of FOX Racing Canada. HIPORA is a registered trademark of Kolon Industries. IPOD and IPAD are registered trademarks of Apple Inc. TEFLON is a registered trademark of E.I. DuPont de Nemours & Co. LEXAN is a registered trademark of SABIC Innovative Plastics Holding BV. PINLOCK is a registered trademark of Pinlock Group B.V. NCOM SYSTEM and NOLAN are registered trademarks of Nolan Helmets S.p.A. NGK is a registered trademark of NGK Spark Plugs Ltd. RAM is a registered trademark of RAM Mounting Systems Inc. SENA is a trademark of Sena Technologies, Inc. SILICONE is a registered trademark of Dow Corning Corporation. TECHNO GI is a trademark of TECHNOGI spa. VELCRO is a registered trademark of Velcro Industries. YKK is a registered trademark of YKK Corporation. YUASA is a registered trademark of Yuasa Batteries Inc. Brembo brake systems is a registered trademark of Brembo S.p.A. GARMIN and ZUMO are trademarks of Garmin Ltd. AKRAPOVIČ EXHAUST SYSTEM TECHNOLOGY is a registered trademark of Akrapovič d.d. SHAD is a trademark of NAD S.L. CYCLOPS is a registered trademark of CyclopsGear. RoadThunder and MTX are registered trademarks of MTX Audio. Ögö is a registered trademark of Madison, a division of H Young Ltd. All other trademarks are the property of their respective owners. All vehicles presented in this brochure are fully accessorized and may differ from what is available in stores. Prices, if shown, are based on Manufacturer Suggested Retail Prices. Dealers may sell for a different price. For Canada & US taxes are not included. Depending on location, products are distributed by BRP US Inc., Bombardier Recreational Products Inc., BRP European Distribution SA, BRP Finland Oy, BRP Australia Pty Ltd. or Bombardier Recreational Products Motores da Amazonia Ltda. BRP reserves the right, at any time, to discontinue or change specifications, prices, designs, features, equipment without incurring obligation. Printed in Canada.

ACCESSORIES 2

CUSTOMIZED VEHICLES	
F3-S	6
F3	7
F3-T	8
F3 LIMITED	9
RT	36
RT LIMITED	37

SPYDER F3 ACCESSORIES	
UFIT SYSTEM	10
HANDLEBARS	11
BRAKE & SHIFTER LINKAGES	12
FOOTBOARDS & IDLER PULLEY	13
SEATS & BACKRESTS	14
WINDSHIELDS & WIND PROTECTION	17
CARGO & STORAGE	19
LIGHTS & ELECTRICAL ACCESSORIES	23
WHEELS	26
FENDERS	27
CUSTOM ACCESSORIES	28
DECALS	30
SHOCKS	31
SILENCERS	32

SPYDER RT ACCESSORIES	
HANDLEBARS & IDLER PULLEY	38
SEATS & BACKRESTS	39
WINDSHIELDS & WIND PROTECTION	40
CARGO & STORAGE	42
LIGHTS & ELECTRICAL ACCESSORIES	44
WHEELS	46
FENDERS	47
CUSTOM ACCESSORIES	48
SHOCKS & SILENCERS	50

CAN-AM FREEDOM TRAILER	
CAN-AM FREEDOM TRAILER	52
TRAILER ACCESSORIES	54

COVERS	56
--------	----

RIDING GEAR 58

MEN'S & LADIES' JACKETS	60
JACKET TECHNOLOGY	63
JACKETS	64
JACKETS - PLUS SIZE COLLECTION	68
TECHNICAL WEAR	70
RAIN GEAR & FOOTWEAR	71
HELMETS & ACCESSORIES	72
COMMUNICATION SYSTEMS	80
GLOVES & PROTECTIVE GUARDS	82
BAGS	83

SPORTSWEAR 84

MENS'	86
LADIES'	88
BRP LIMITED WARRANTY	90
SIZING CHART	91

PARTS 92

OILS & MAINTENANCE 94

ACCESSORIES

Free spirit, adventurer, non-conformist. That's you. That's your ride. Define your own freedom. Rule the road on your terms. Customize, personalize, and revolutionize your ride, your way. That's Can-Am Spyder accessories.



F3

ACCESSORIES

Fuel your imagination with accessories designed to enhance the dynamic, spirited ride of your Spyder F3. Tweak performance, create your own mix of cruiser-specific ergonomic options, or choose a distinctive look that shows your true colors.



AUXILIARY LIGHTS 219400511



ROADTHUNDER[®] SOUNDBAR BY MTX[®] 219400840



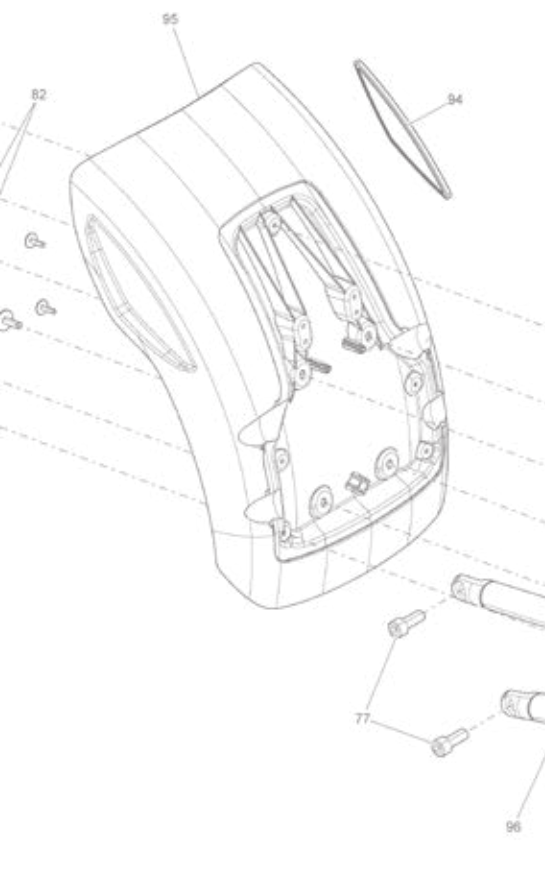
GAUGE SPOILER 219400531



FOX[®] ADJUSTABLE FRONT SHOCKS 219400733



PASSENGER ARMRESTS 219400726



Let our customized versions of these Can-Am Spyder serve as inspiration for creating your own! How would you build yours?

F3-S NITRO
INSPIRED LOOK



- 1 219400911 ATTITUDE HANDLEBAR
- 2 219400511 AUXILIARY LIGHT
- 3 219400701 AKRAPOVIČ[®] SINISTER SILENCER
- 4 219400357 15" TWIN-BLADE WHEELS
- 5 219400515 FOX[®] FACTORY SERIES 1.5 PODIUM[®] R FRONT SHOCKS
(Not visible on the image above)

- 6 219400531 GAUGE SPOILER
- 7 219400713 HOOD STRIPES DECAL KIT
- 8 219400640 BOBBER KIT
- 9 219400840 ROADTHUNDER SOUNDBAR BY MTX[®]
- 10 219400599 SIGNATURE LIGHT

F3 DARK SHADOW
INSPIRED LOOK



- 1 219400721 SHAD[®] SADDLEBAGS FOR CAN-AM
- 2 219400728 SHAD SADDLEBAGS F3 RACK
(Not visible on the image above)
- 3 219400747 ROUTE 129 WINDSHIELD
- 4 219400498 DETACHABLE DRIVER BACKREST
- 5 219400595 SUPER SPORT GRILLE

- 6 219400903 DRIVER FOOTBOARDS
- 7 219400910 LONG REACH HANDLEBAR
- 8 219400509 HEATED DRIVER GRIPS
- 9 219400731 SHAD SADDLEBAGS LINERS
(Not visible on the image above)

Looking to personalize your Can-Am Spyder?
Here is one of countless possibilities.

F3-T ROAD CONQUEROR INSPIRED LOOK



- 1 219400703 DETACHABLE PASSENGER BACKREST
- 2 219400498 DETACHABLE DRIVER BACKREST
- 3 219400497 CANNONBALL SEAT
- 4 219400903 DRIVER FOOTBOARD
- 5 219400901 PASSENGER FOOTBOARD

- 6 219400645 REAR TAIL RACK
- 7 219400509 HEATED DRIVER GRIPS
- 8 219400365 15" RT FRONT WHEEL
- 9 219400650 AKRAPOVIČ SPORT TOURING 3C SILENCER
- 10 219400631 FRONT CARGO BAG
(Not visible on the image above)

F3 LIMITED WEEKEND WARRIOR INSPIRED LOOK CHROME EDITION



- 1 219400547 CHROME STOCK HANDLEBAR
- 2 219400904 CHROME DRIVER FOOTBOARD
- 3 219400902 CHROME PASSENGER FOOTBOARD
- 4 219400498 DETACHABLE DRIVER BACKREST
- 5 219400606 DELUXE SADDLEBAGS LINERS
(Not visible on the image above)

- 6 219400511 AUXILIARY LIGHT
- 7 219400726 PASSENGER ARMRESTS
- 8 219400596 TALL BOY WINDSHIELD
- 9 219400602 VINYL COAST-TO-COAST SEAT
- 10 219400748 TOP CASE INNER BAG
(Not visible on the image above)

YOUR CAN-AM SPYDER. YOUR FIT.

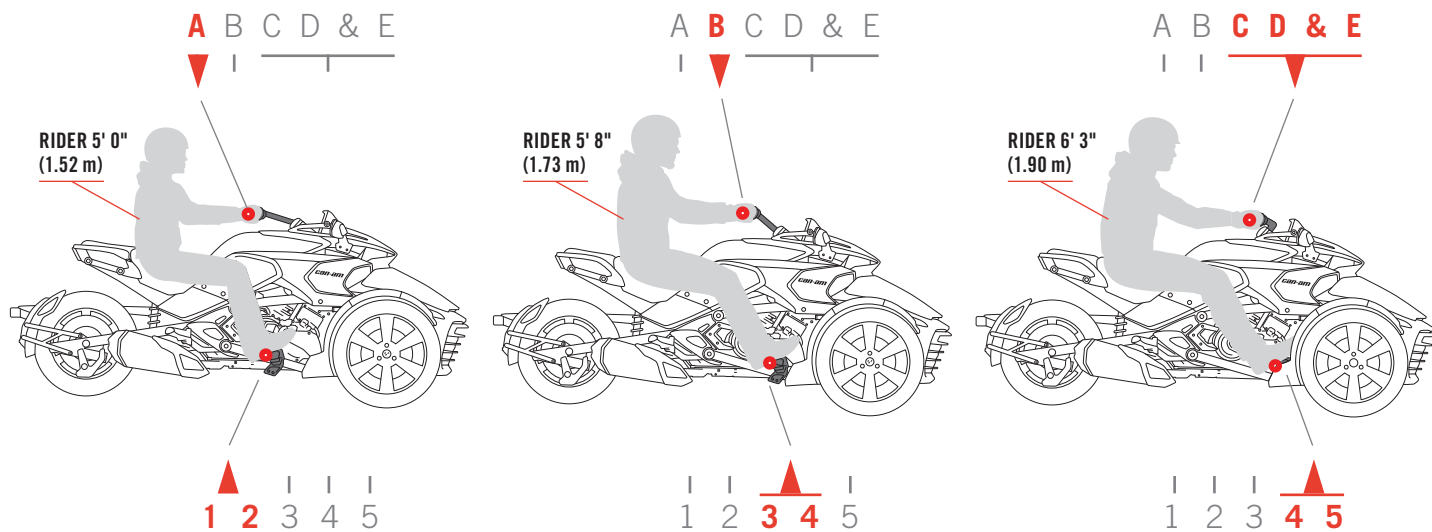


Five footpeg positions and five handlebar options to optimize your fit and comfort.

FIND YOUR PERFECT SPYDER FIT AT [UFITSYSTEM.COM](https://ufitsystem.com) OR VISIT YOUR DEALER TO TEST DRIVE AND ASK ABOUT THE SHOWROOM FIT TOOL.

All Spyder F3 models feature our exclusive UFit system so you can customize an exact fit based on your height or preferred riding style.

CHOOSE FROM 5 HANDLEBAR OPTIONS



CHOOSE FROM 5 FOOTPEG POSITIONS



HANDLEBARS



POSITION A

SHORT REACH HANDLEBAR

- Part of the UFit System.
- Perfect for shorter riders with pegs positions 1 or 2.

All Spyder F3 models

219400545 - Chrome
(Clamp Kit included)
\$449.99

219400909 - Carbon Black
\$149.99



POSITION B

STOCK HANDLEBAR

- Part of the UFit System.
- Same shape and reach as the stock handlebar with a chrome finish.
- Fits best with pegs positions 3 or 4.

All Spyder F3 models

219400547 - Chrome
(Clamp Kit included)
\$449.99



POSITION C

LONG REACH HANDLEBAR

- Part of the UFit System.
- The longer reach causes the torso to lean forward, bringing the riding position closer to the console.
- Perfect for taller riders with pegs positions 4 or 5.

All Spyder F3 models

219400548 - Chrome
(Clamp Kit included)
\$449.99

219400910 - Carbon Black
\$149.99



POSITION D

ATTITUDE HANDLEBAR

- Part of the UFit System.
- The shape has an impact on the driving position, leaning the torso towards the console and tilting the arm and wrist position.
- Perfect for taller riders with pegs positions 4 or 5.

All Spyder F3 models

219400550 - Chrome
\$449.99

219400911 - Carbon Black
\$149.99



POSITION E

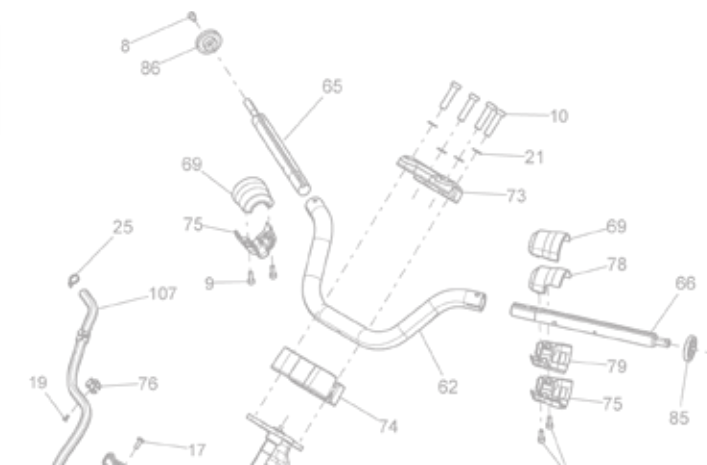
DRAW BAR

- Part of the UFit System.
- Race-inspired straight bar is wide and more forward for a more aggressive riding position or tall drivers.
- Perfect for taller riders with pegs position 5.

All Spyder F3 models

219400646 - Chrome
(Clamp Kit included)
\$499.99

219400594 - Carbon Black
\$299.99





BRAKE & SHIFTER LINKAGES



BRAKE & SHIFTER LINKAGES

- Part of the UFit System.
- Find the best driving position for you.
- Replace stock linkage to set pegs to different positions.

All F3 SE6 models

- 2. Position 1 - 219400561
 - 1. Position 2 - 219400563
 - +1. Position 4 - 219400566
 - +2. Position 5 - 219400571
- \$29.99

All F3 SM6 models

- 2. Position 1 - 219400560
 - 1. Position 2 - 219400562
 - +1. Position 4 - 219400564
 - +2. Position 5 - 219400565
- \$49.99



FOOTBOARDS



DRIVER FOOTBOARDS

- Replace stock pegs for additional comfort.
- Come with rubber pads and mounting hardware.
- Can be positioned with the UFit System.

All Spyder F3 models

■ 219400904 - Chrome

\$549.99

■ 219400903 - Carbon Black

\$449.99



PASSENGER FOOTBOARDS

- Replace stock pegs for additional comfort.
- Come with rubber pads and mounting hardware.

All Spyder F3 models

■ 219400902 - Chrome

\$399.99

■ 219400901 - Carbon Black

\$299.99

IDLER PULLEY

F3 IDLER PULLEY SERVICE KIT

- (Not illustrated)
- Enhances your comfort on the road by reducing vibrations generated by the belt.

All Spyder F3 models

219800431

\$34.99



**INSTALLS
IN SECONDS.**

SEATS & BACKRESTS



VINYL COAST-TO-COAST SEAT

- Long-distance comfort based on our renowned coast-to-coast design.
- Wide, well-shaped and generously padded driver and passenger seats deliver enough comfort for a coast-to-coast ride.
- Installs in seconds and works with both driver and passenger backrests.

All Spyder F3 models

219400602 · Black

\$549.99



LEATHER COAST-TO-COAST SEAT

- Genuine stitched-leather* seat.
- Passenger and driver seats rain cover included.
- Installs in seconds and works with both driver and passenger backrests.
- Long-distance comfort based on our renowned coast-to-coast seat design.
- Wide, well-shaped and generously padded driver and passenger seats deliver enough comfort for a coast-to-coast ride.

* Natural leather fades and wrinkles over time. Allow to air-dry when wet, apply leather-conditioning oil to maintain appearance. Clean with warm water, mild soap and a soft cloth. Use the included seat cover to keep your seat looking new longer.

All Spyder F3 models

219400656 · Tan

\$649.99



**ADJUST UPWARDS,
DOWNWARDS,
FORWARDS,
BACKWARDS,
AND OUTWARDS.**



PASSENGER ARMRESTS

- Adjust upwards, downwards, forwards, backwards, and outwards.
- Arm height provides up to 0.78" (20 mm) vertical adjustment.
- Fully-compatible with RAM® cup holder.
- Complete with grip for added passenger security.
- Top Case not required for installation or use.
- Recommended to install with Top Case (219400897) or Passenger Backrest (219400794 or 219400703).

All Spyder F3 models

219400726 · Black

\$399.99



CANNONBALL SEAT

- 2-piece driver and passenger seats.
- Installs in minutes.
- Designed with additional padding, larger support areas and integrated comfort rear pad.
- Distinctive high-end stitching pattern.
- Driver backrest ready.

All Spyder F3 models

219400497 · Black

\$569.99

2-UP CONVERSION KIT

(Not illustrated)

- Complete passenger kit to allow 2-up riding on 2019 F3 base.
- Includes passenger seat, pegs and handles.

2019 F3 Base models

219400975

\$364.99



DETACHABLE DRIVER BACKREST

- Generous width and height for superior lumbar support.
- Installs and removes in minutes.
- Tilt adjustable.
- Fits on production, Cannonball, Vinyl Coast-to-Coast and Leather Coast-to-Coast seats.
- Anti-theft feature.

All Spyder F3 models

219400498 · Black
\$399.99



DETACHABLE PASSENGER BACKREST

- Generous width and height for superior lumbar support.
- Initial installation in minutes, toolless removal in seconds.
- Anti-theft feature.
- Fits on production, Cannonball, Vinyl Coast-to-Coast and Leather Coast-to-Coast seats.
- Invisible mounting system unrecognizable when not installed.

Spyder F3, F3-S, F3-T

219400703 · Black
\$559.99



PASSENGER SHORT RAIL

- Sporty looking short passenger comfort rear pad.
- Doesn't fit when the Top Case with Integrated Passenger Backrest (219400897) is installed.
- Installs in minutes.
- Fits on production seats.

Spyder F3, F3-S, F3-T

219400580 · Black
\$359.99

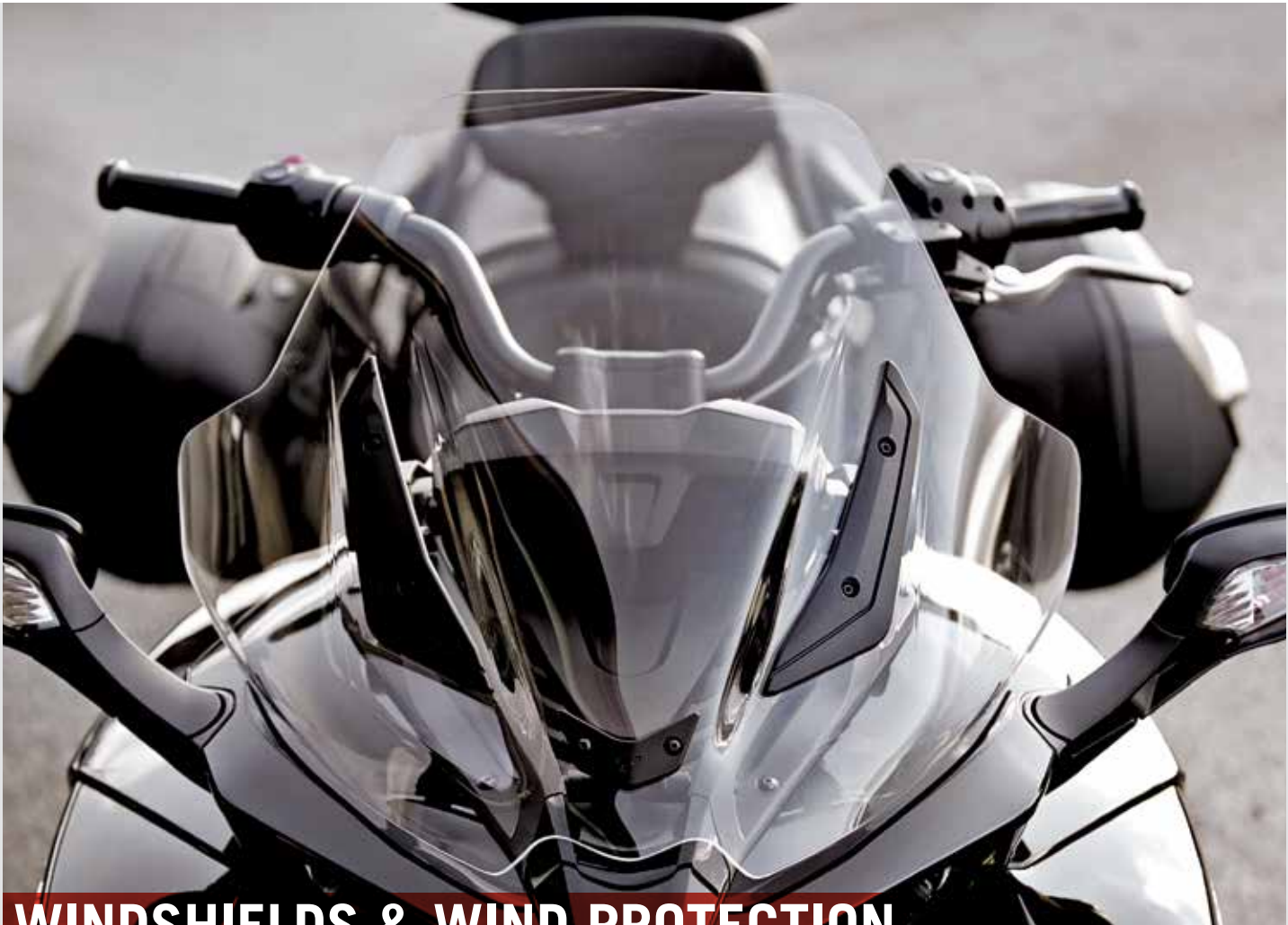


ADJUSTABLE PASSENGER BACKREST

- Dual axis adjustments for the backrest and cushion enable you to dial-in comfort and add up to 2" (50 mm) more passenger room.

Spyder F3, F3-S, F3-T

219400794 · Carbon Black
\$749.99



WINDSHIELDS & WIND PROTECTION

BLUE RIDGE WINDSHIELD

- Made of clear 4.5 mm polycarbonate.
- Comes complete with supports and hardware.

Spyder F3, F3-S

219400746 · Clear
\$399.99



ROUTE 129 WINDSHIELD

- Sport windshield.
- Made of 4.5 mm polycarbonate.
- Provides lower body protection.
- Comes complete with supports and hardware.

Spyder F3, F3-S

219400747 · Clear
\$339.99





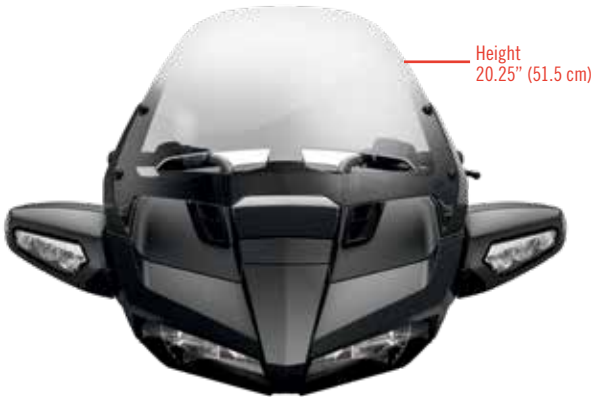
GAUGE SPOILER
· Enhances the sporty look of the Can-Am Spyder F3.
· Made of injected tinted polycarbonate.

Spyder F3, F3-S
■ 219400531 · Smoke
\$169.99



WINDSHIELD TRIM KIT
· Dresses up accessory windshield kits with chrome center trim.
· Looks great with Windshield Trims (219400355).

Fit with Blue Ridge Windshield (219400746) and Route 129 Windshield (219400747)
■ 219400698 · Chrome
\$29.99



TALL BOY WINDSHIELD
· Mid-height windshield.
· Scratch and UV-resistant hardcoat on 5 mm polycarbonate shield.
· Windshield supports included.

Spyder F3-T, F3 Limited
□ 219400596 · Clear
\$379.99

Can-Am Spyder accessories are subject to the same rigorous physical testing requirements as the vehicles.



SHAD
FOR *can-am*

BRP partners with SHAD†, a recognized leader in the manufacture of high-advanced motorsport bags and storage accessories.

Their designs are known to be the state-of-the-art, totally functional and of first class quality, which have earned them the prestigious international “Red Dot: Best of the Best” award in 2015.



CARGO & STORAGE

SHAD SADDLEBAGS FOR CAN-AM

- Patented lightweight bike-specific design.
- 3-point mount.
- Waterproof, shock-resistant.
- 9.5 US gallons capacity (36 L).
- Enough room for a 2XL full face helmet equipped with a communication system.
- Unique Can-Am reflector.
- Required mounting support and hardware are sold separately (219400728).
- Required mounting support for Europe (219400727).

Spyder F3, F3-S
■ 219400721 · Black
\$474.99



SHAD REAR SEAT BAG

- 100% waterproof 3-layer (PVC-Nylon-PVC) design that's tear and abrasion resistant.
- 7.4 US gallons (28 L) capacity.
- Foam-lined inner compartment for laptop or other valuables.
- Includes attachment straps.
- Converts to backpack, complete with chest strap.

All Spyder models
■ 219400730 · Black
\$129.99



SHAD SADDLEBAGS F3 RACK

- (Not illustrated)
- Custom rack specially designed for mounting SHAD Saddlebags (219400721).
 - Integrated red reflectors and necessary hardware for SHAD Saddlebags.

Spyder F3, F3-S
■ 219400728 · Black
■ 219400727 · Black · Europe
(Amber reflectors) EC compliant
\$249.99

SHAD SADDLEBAGS LINERS

- Designed expressly for SHAD Saddlebags (219400721) to provide extra convenience.
- Include integrated carrying handle and a shoulder strap.
- Sold in pairs.

Spyder F3, F3-S
■ 219400731 · Black
\$94.99





CROSS-COUNTRY DETACHABLE SADDLEBAGS

- Add a total of 13 US gallons (50 L) of storage space.
- Finished in high-end vinyl and with a metal chrome side hinge.
- Water-resistant and top loading, lockable with key.
- Toolless installation and removable in seconds after initial installation.
- Brackets are invisible when bags are not on.
- Bolts 250000869 needed to install 2015 Cross-Country Detachable Saddlebags (219400492 and 219400590 (EC)) on 2016 models.

Spyder F3, F3-S 2016 & up
219400696 - Black
219400697 - Black - Europe (Amber light) - EC compliant
\$1,330.99



DELUXE SADDLEBAGS LINERS

- Complete your production saddlebags with Deluxe Saddlebags Liners.
- The easiest way to carry your items from your Can-Am Spyder saddlebags, with integrated handle.

Spyder F3-T, F3 Limited
219400606 - Black
\$99.99



CROSS-COUNTRY SADDLEBAGS LINERS

- Soft travel bags for use inside the Cross-Country Detachable Saddlebags (219400696, 219400697 EC).
- Integrated handle for easy transport.
- Sold in pairs.

Spyder F3, F3-S
219400609 - Black
\$69.99

LOCK KIT FOR CROSS- COUNTRY DETACHABLE SADDLEBAGS
(Not illustrated)
· Replacement lock and key for Cross-Country Detachable Saddlebags (219400696, 219400697 EC)
Spyder F3, F3-S (service kit)
219400737
\$94.99

FRONT CARGO BAG
· Easy way to organize and tote your items in the front cargo compartment.
· Slides in and out with integrated handle and shoulder strap.
All Spyder F3 models
219400631 - Black
\$89.99



TOP CASE WITH INTEGRATED PASSENGER BACKREST
· Fits up to two 2XL full face helmets including communication system.
· Integrated passenger backrest.
· Protective rubber carpet-lined bottom.
· Required vehicle color matching side panels to complete the top case assembly - sold separately.
· Top Case Speakers Amplifier Kit (219400769) is required to play music through top case speakers.
Spyder F3-T 2018 and prior
219400897 - Black
219400898 - Black - Europe - EC certified
\$1,624.99



TOP CASE PANEL KIT
· Vehicle-matched top case side panels.
Spyder F3-T with Top Case
219400758 - Steel Black Metallic
219400759 - Pearl White
219400760 - Intense Pearl Red
219400761 - Pure Magnesium
219400859 - Oxford Blue Metallic
\$199.99



TOP CASE RACK
· Allows for added external storage capacity when used with netting or bungee cords.
· Sturdy stamped-aluminum construction.
· Includes integrated anchor points.
Spyder F3-T with Top Case, F3 Limited 2017 and up
219400743 - Black
\$214.99

TOP CASE INNER BAG
· Maximizes top case volume.
· Complete with integrated handle and shoulder strap for convenient portability.
Spyder F3-T with Top Case, F3 Limited 2017 and up
219400748 - Black
\$129.99



TOP CASE SPEAKERS AMPLIFIER KIT
(Not illustrated)
· Amplifier kit is required to play music through top case speakers.
· Connects to the standard front audio system.
· Includes amp harness and hardware.
Spyder F3-T 2016-2017 with Top Case
219400769
\$324.99



URBAN RACK

- Solid aluminum construction offering 0.9 US gallon (3.37 L) of water-resistant storage.
- Comes with net to allow users to strap additional luggage on top.
- Pops into passenger seat space in seconds.
- Anti-theft feature.

Spyder F3, F3-S
219400493 · Carbon Black
\$409.99



F3 MONO SEAT COWL

- High quality injection-molded part.
- Pops into passenger seat space in seconds.
- Transforms your vehicle into sporty solo configuration.
- Adds 1.25 US gallons (4.73 L) of lockable water-resistant storage.

Spyder F3, F3-S
219400494 · Steel Black Metallic
\$324.99



INTEGRATED HELMET BAG

- Truly integrated easy-to-use helmet storage solution.
- Sturdy water-resistant construction.
- Includes elastic straps for tying down helmet bag onto seat.
- Complete with anti-theft wire for added security.

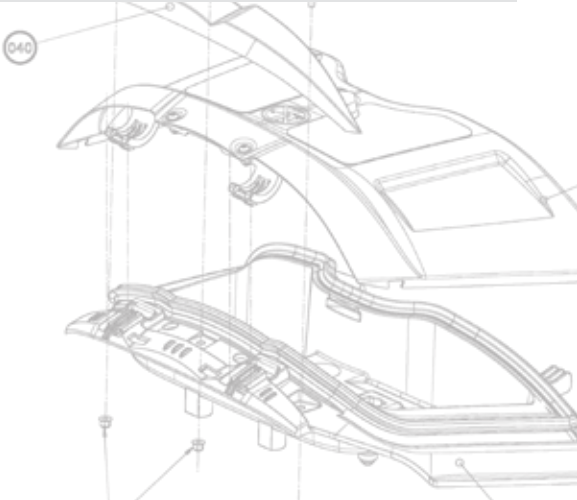
All Spyder RT & F3 models
219400850 · Black
\$59.99



REAR TAIL RACK

- Robust monobloc cast-aluminum construction.
- Ideal for stowing soft bags, tents, or sleeping bags.
- Includes convenient integrated anchor points.
- Bolts securely to the vehicle frame.

Spyder F3-T, F3 Limited 2016
219400645 · Black
\$199.99



LIGHTS & ELECTRICAL ACCESSORIES



ENHANCE LOW BEAM LIGHT FOR BETTER VISIBILITY.



AUXILIARY LIGHTS

- Halogen fog lamps.
- Enhance low beam light for better visibility.
- Plug-and-play with stock harness.
- Integrated ON/OFF switch.
- Not EC compliant.

All Spyder F3 models
219400511
\$509.99



HEATED DRIVER GRIPS

- Complete heating kit with one intensity setting.
- Easy installation.
- Integrated ON/OFF switch.

Spyder F3, F3-S, F3-T
219400509 · Black
\$219.99



ROADTHUNDER SOUNDBAR BY MTX*

- Bluetooth* speaker with the unbeatable convenience of fingertip control.
 - Rugged IP66-rated weather-resistant speaker designed for outdoor use.
 - Driven by 150 watts of quality audio power.
 - Seamless integration and operation from Bluetooth enabled devices.
 - Includes: input, ground and ignition wires, plus auxiliary port and 3.5" connector cable.
- Note: We recommend you to use 320 Kbps MP3 - 192-256 Kbps AAC or AIFF, WAV formats to match the potential of the speaker. More compressed formats will probably have degraded sound quality.

Spyder F3, F3-S
219400840
\$399.99



↓
Zumo 590 GPS has the ability to link itself wirelessly to optional Garmin tire pressure sensors and the Garmin Virb video camera for enhanced GPS functionality.

GARMIN® ZUMO® 590 GPS

- Features a glove-friendly and sunlight-readable 5" (12.7 cm) dual-orientation touchscreen display.
- Offers hands-free phone control and spoken directions heard in-helmet via Bluetooth® 5 technology.
- Includes a MP3 player.
- iPod® and Pandora® compatibility.
- Allows control of music right on the display.
- Rugged and tough enough to withstand fuel spills, UV rays and harsh weather.
- Offers access to real-time weather and traffic information via the smartphone link app.
- Free lifetime map updates.
- Curvy Roads Routing allows rider to find winding roads.
- GPS Holder (219400912) sold separately.

All Spyder models
219400512
219400699 · Europe
\$799.99



CGX3 CAMERA

- 160° wide angle lens.
- Resolution options: from 3MP up to 20MP and VGA.
- Video resolutions available: 2.7K at 30 frames per second (FPS), 720P at 120/60/30 FPS, 1080P at 60/30 FPS and VGA at 240 FPS.
- Memory: Class 10 32GB micro SD card.
- 2" (5 cm) capacitive touchscreen.
- Li-ion battery capacity of 1050mAh, working time of 1/1.5 hours and charging time of 3 hours (2 batteries included).
- WiFi function remotely operates up to 49.2' (15 m) with mobile devices and CYCLOPS app for Android and IOS.
- Waterproof up to 32.8' (10 m) without a case.
- Features modes such as invert, time lapse, high speed & loop recording, motion detection, capture (while recording a video), burst and anti-sharing.
- Comes with 8 mounting accessories.



9700130090
\$349.99

CYCLOPS® 360° PANORAMIC HD VIDEO CAMERA

- Features a 220-degree wide-angle lens.
- Video resolutions up to 4K at 30 frames per second.
- Professional 16MP quality photos.
- Rugged, light and portable.
- Magnetic mount for vibration-free footage and mounting to any metal surface.
- Comes with 32GB Class 10 micro SD card.
- Waterproof case up to 164' (50 m).
- Wi-Fi available to remotely control your camera from your smartphone or computer with the free CGX2 App.
- 16 modes and effects, including driving mode, loop recording, time lapse and slow motion.
- Comes with 10 mounting accessories.
- Compatible with VR goggles.



9700020090
\$349.99

GPS HOLDER (WITHOUT HARNESS)

(Not illustrated)
All Spyder F3 models
219400717
\$189.99

GARMIN ZUMO GPS HOLDER (WITHOUT HARNESS)

(Not illustrated)
All Spyder F3 models
219400913
\$174.99

BOLTS KIT FOR GPS HOLDER

(Not illustrated)
· Required to fit Garmin Zumo GPS Holder (219400913) on Drag Bars (219400646, 219400594).
All Spyder F3 models
219400655
\$19.99

GPS HOLDER

· Sits high on right side handlebar for optimum visibility.
· Multidirectional adjustment to prevent sunglare and adapts to any rider.
· Harness included.
All Spyder F3 models
219400749
\$219.99



POWER OUTLET KIT

- Recharges your electronic devices while riding* (smartphone, MP3, heating gear, etc.).
 - Dual port USB connectors.
 - Plug-and-play kit.
 - Simply connect under driver seat and use.
- *The power outlet is not capable of recharging all device types while riding.

All Spyder RT models, RS, ST, F3, F3-S
219400510 · USB
\$29.99

- Adds an extra 12V power outlet to your vehicle.
- Conveniently located in front cargo bin.

All Spyder models
219400366 · 12V
\$34.99



GARMIN ZUMO GPS HOLDER

- Positions Garmin Zumo GPS on the center of all UFit System handlebars.
- Wiring/charging harness included.
- Incompatible with the Roadthunder Soundbar by MTX (219400840).

All Spyder F3 models
219400912
\$249.99



F3-T FRONT RADIO SYSTEM

- Upgrades sound, 2 woofers speakers and 2 mids (4X20 watts), USB plugs, aerial and hardware included.

Spyder F3-T, F3 Limited 2016
219400680
\$929.99



WHEELS



15" FAT 6 CHROME WHEELS

- Same design as Spyder F3 production wheels in PVD finish.
- Sold in pairs.

All Spyder F3 and RT models, RS, ST 2013 and up
219400589 · Chrome

\$719.99



15" SHAMROCK WHEELS

- Add personality to your Can-Am Spyder.
- Casted, painted and machined wheels.
- Sold in pairs.

All Spyder F3 and RT models, RS, ST 2013 and up
219400500 · Deep Black

\$609.99



15" BLADE MAG WHEELS

- Unidirectional design (left and right wheel).
- Patented casting process allows a weight reduction of 2.2 lbs (1 kg) per wheel compared to stock wheels.
- Sold in pairs.

All Spyder F3 and RT models, RS, ST 2013 and up
219400465 · Black

\$659.99



15" BONNEVILLE DISH WHEELS

- Give your Can-Am Spyder a retro look with these 15" wheels inspired by Salt Flat racers.
- Wheel nuts are hidden behind the center cap.
- Sold in pairs.

All Spyder F3 and RT models, RS, ST 2013 and up
219400501 · Black

\$599.99



CHROME REAR WHEEL

- 6-spoke PVD — chrome-like powder-coat, more resistant than regular chrome — monobloc rear wheel (hub and wheel in one piece).

All Spyder F3 and RT models, RS, ST 2013 and up
219400574 · Chrome

\$659.99



15" RT FRONT WHEELS

- 15" 12-spoke mags.
- Sold in pairs.

All Spyder F3 and RT models, RS, ST 2013 and up
219400365 · Grey

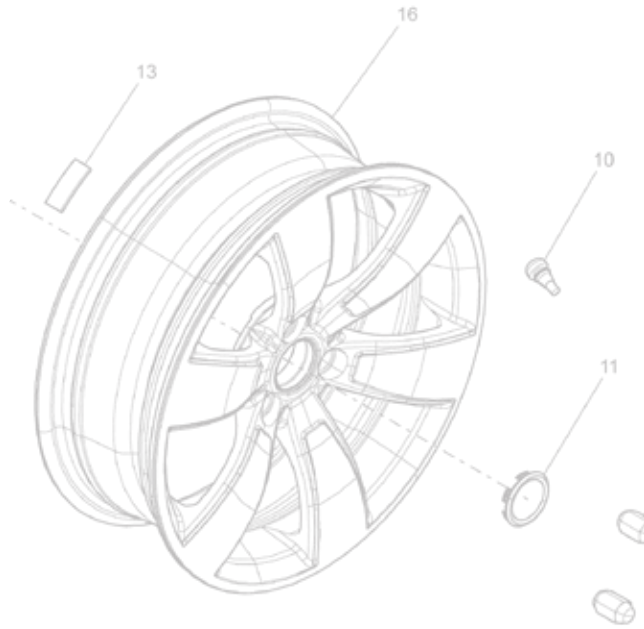
\$579.99

219400419 · Carbon Black

\$559.99



WHEEL NUTS ARE
HIDDEN BEHIND
THE CENTER CAP.



15" BLADE MAG WHEELS SERVICE KIT

(Not illustrated)

- Replacement "blade" for wheels.
- 219400542 · Left · Brushed Aluminum
- 219400543 · Right · Brushed Aluminum

\$24.99



FENDERS

CHOPPED REAR FENDER

- Sleek, short fender shows off the massive Spyder F3 rear tire.
- Street legal and includes license plate holder, LED light and required hardware.
- License plate holder not compliant outside North America.

Spyder F3, F3-S

219400597 · Carbon Black

\$429.99



LOW BROW FRONT FENDERS

- Super sleek drawn steel fenders with LED position lights integrated into the front edge.
- Include electrical harness and required hardware.
- Sold in pairs.
- LED position lights not EC compliant.

All Spyder RT models, RS, ST 2013 and up, all Spyder F3 models 2018 & prior

219400502 · Carbon Black

\$949.99





EVERYTHING NEEDED
TO TRANSFORM
A 2-UP INTO A 1-UP.

CUSTOM ACCESSORIES

- BOBBER KIT***
- Everything needed to transform a 2-up into a 1-up.
 - Rear fender, tail light assembly, footrest trim, license plate support, and all necessary hardware included.
 - Can also accomodate any production or accessory seat.
- * · A bobbed tail increases the amount of projection from the rear tire versus a traditional fender.
- Laws vary state to state regarding rear fender tire coverage compliance. Please obey all applicable laws and regulations.

Spyder F3, F3-S
■ 219400640 · Black
■ 219400745 · Black · Europe · EC compliant
(Doesn't include rear fender and licence plate support)
\$799.99



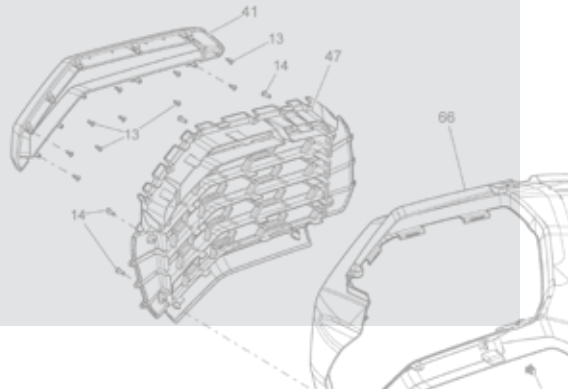
↓
A bobber, originally called a 'bob-job' from the 1930s through 1990s, is a style of custom motorcycle. The typical construction includes stripping excess bodywork from a motorcycle, and shortening the rear fender, which is "bobbed" (as in bob-tail).



SUPER SPORT GRILLE

- Adds an even more muscular look with this honeycomb-styled front grille with integrated front splitter.

All Spyder F3 models
■ 219400595 · Black / Can-Am Red
\$349.99



PULLEY COVER

- Replaces the stock plastic PTO (drive pulley) cover with a genuine chrome cover.

All Spyder F3 models
■ 219400557 · Chrome
\$199.99



FRAME CAPS

- Add a little bling to the frame of your vehicle.
- 4 frame caps per pack.

All Spyder F3 models
■ 219400555 · Chrome
\$129.99



TMC COVER

- Replaces the stock plastic TMC (master cylinder) cover with a genuine chrome cover.

All Spyder F3 models
■ 219400559 · Chrome
\$209.99



HANDLEBAR END CAPS

- Sold in pairs.

All Spyder models
■ 219400702 · Chrome
\$41.99







SIGNATURE LIGHT

- Creates an unmistakable, distinctive look.
- No switch, automatically turns on.
- Includes required wiring and hardware for Spyder F3 2016 models and up.
- Not EC compliant.

All Spyder F3 models

 219400599 · White

\$169.99




SIGNATURE LIGHT - 2015 ADAPTER KIT

(Not illustrated)

- Wiring harness required for installing Signature Light (219400599) on 2015 models.
- Allows the light to automatically illuminate when the engine is running.
- LED lights.

Spyder F3, F3-S 2015

 219400636 · Black

\$39.99

DECALS



HOOD STRIPES DECAL KIT

- Adds personality to your Can-Am Spyder F3.

All Spyder F3 models

 219400711 · Can-Am Red

 219400714 · Gloss White

 219400713 · Matte Black

 219400712 · Satin Silver

\$79.99



F3 MONO SEAT COWL STRIPES DECAL KIT

- Premium decals complement Hood Stripes Decal Kit.

Spyder F3, F3-S

 219400661 · Can-Am Red

 219400662 · Gloss White

 219400663 · Matte Black

 219400664 · Satin Silver

\$59.99



REAR TAIL STRIPES DECAL KIT

- Premium decals complement Hood Stripes Decal Kit.

Spyder F3-T, F3 Limited 2016

 219400665 · Can-Am Red

 219400666 · Gloss White

 219400667 · Matte Black

 219400668 · Satin Silver

\$49.99

SHOCKS



↓
FOX® shocks have been an industry leader in high-performance shocks and racing suspensions for over 30 years.

FOX ADJUSTABLE FRONT SHOCKS

- Features spring-adjustable preload and wide-range externally-adjustable rebound damping for an infinite array of tuning options made to suit any riding style.
- Whether it's smooth cruising or twisting down your favorite winding road they deliver exceptional performance, comfort, and a superior quality ride.

Spyder F3-T, F3 Limited

219400733

\$849.99



FOX FACTORY SERIES 1.5 PODIUM R FRONT SHOCKS

- Featuring spring-adjustable preload and a wide range of externally adjustable rebound damping, the PODIUM R shocks provide an infinite array of tuning options to comfortably suit your riding style.
- Whether you're out for a mellow cruise or enjoying your favorite twisty route, the PODIUM R shocks will deliver superb performance, great comfort, and an overall quality ride.

Spyder F3, F3-S

219400515

\$849.99



FOX FACTORY SERIES 2.0 PODIUM RC2 REAR SHOCK

- Provides an infinite range of options for the perfect set-up.
- Its anodized 6061-T6 aluminum body and remote aluminum reservoir make the lightweight PODIUM RC2 shock a reliable and awesome performer.

Spyder F3, F3-S

219400577

\$969.99



FOX ADJUSTABLE REAR SHOCK

- FOX Factory Series rear shock delivers an infinite range of set-up options.
- Anodized lightweight 6061-T6 aluminum body provides enhanced reliability and excellent performance.

Spyder F3, F3-S

219400734

\$649.99



AUTOMATIC REAR AIR SUSPENSION KIT

- Automatic suspension assures a smooth, comfortable ride.
- Includes air compressor and all required hardware.

Spyder F3-T, F3 Limited

219400738

\$464.99



OCCASIONAL 2-UP REAR SHOCK

- Weight-bearing capacity designed for occasional 2-up use.

Spyder F3, F3-S

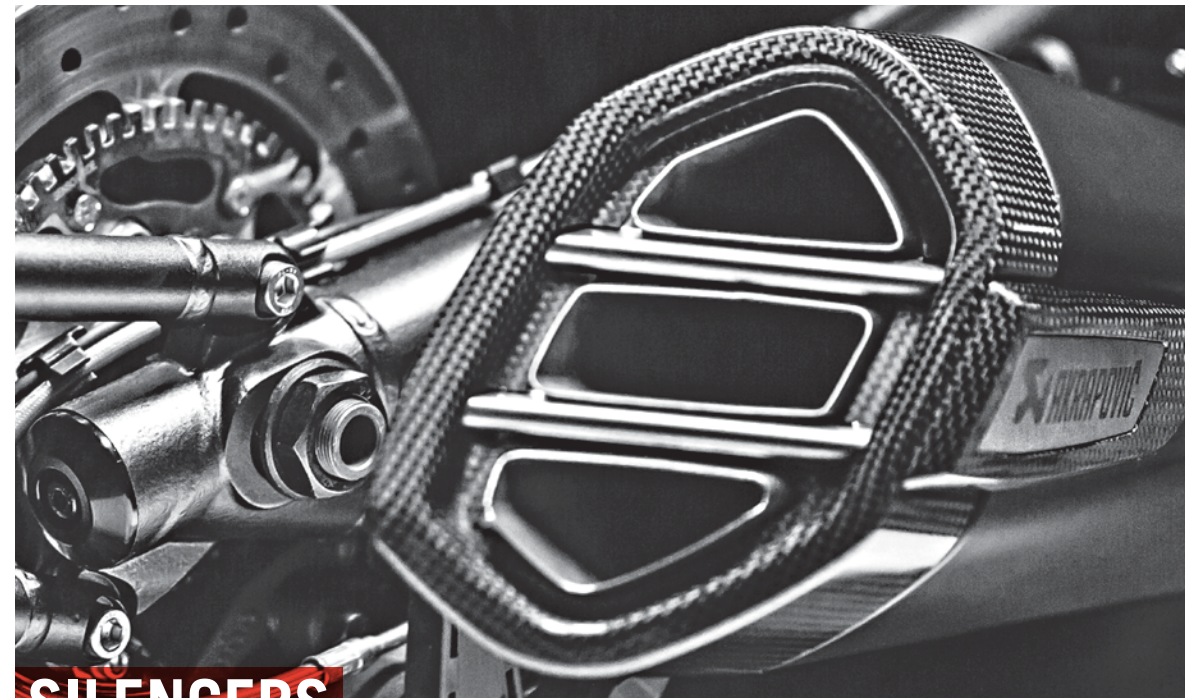
219400739

\$199.99

UPGRADE YOUR GROWL

AKRAPOVIČ SILENCERS TOP FEATURES

- Deeper, more guttural sound than stock silencer.
- Meet the most stringent standards - EPA, CARB & EC certified.
- Maintain vehicle warranty requirements.
- Easy installation.
- Exhaust fit compatible with all BRP genuine accessories.



SILENCERS

AKRAPOVIČ SINISTER SILENCER

- 3-outlet design exclusive to Can-Am.
- Finished in bold flat black carbon & stainless steel.
- Unique Akrapovič growl.
- Akrapovič Sinister Silencer Heat Shield Replacement Kit available (219400766).
- Not AS certified.

Spyder F3, F3-S

219400701 - Black

\$1,099.99



AKRAPOVIČ STRAIGHT SHOT SILENCER

- Premium chromed stainless steel shell construction, end cap and heat shields.
- Not AS certified.

Spyder F3, F3-S 2015 and up (Europe: 2015-2017 only)

219400514 - Chrome

\$1,119.99



AKRAPOVIČ SPORT TOURING 3C SILENCER

- Set your ride apart with the dynamic, deep resonant sound of an Akrapovič silencer.
- Its premium titanium and carbon fiber construction is 55% lighter than stock model and it's been tested to meet the most stringent requirements.
- Not AS certified.

Spyder F3-T, F3 Limited, RT 2015 and up

219400650 - Titanium - Canada / US

219400838 - Titanium - Other countries

\$999.99



AKRAPOVIČ SINISTER SILENCER HEAT SHIELD REPLACEMENT KIT

(Not illustrated)

Spyder F3, F3-S (service kit)

219400766

\$199.99

AKRAPOVIČ STRAIGHT SHOT SILENCER HEAT SHIELD REPLACEMENT KIT

(Not illustrated)

Spyder F3, F3-S

219400629

\$259.99

AKRAPOVIČ STRAIGHT SHOT SILENCER END CAP

(Not illustrated)

Spyder F3, F3-S

219400630

\$259.99

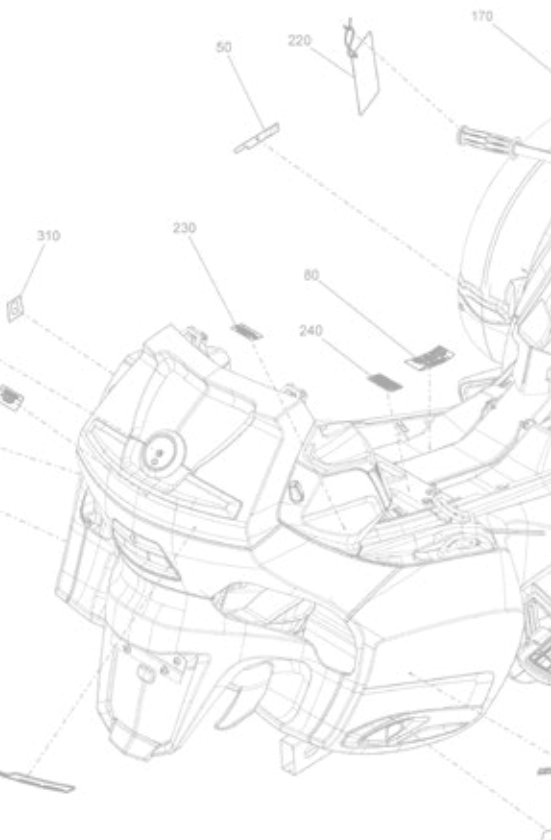


Akrapovič was established in 1990 by Slovenian racer Igor Akrapovič who had found that during his racing career there was a distinct lack of high-quality exhaust systems on the market to the public.

RT

ACCESSORIES

Cover the distance from ordinary to extraordinary more smoothly & comfortably with accessories designed for epic rides and endless open-road freedom. Customizing your Spyder RT luxury touring experience begins here. Adventure, made better.



ADJUSTABLE SIDE WIND DEFLECTORS 219400362



TRI AXIS ADJUSTABLE HANDLEBAR 219400344



LOW BROW FRONT FENDERS 219400502



TOURING WINDSHIELD 219800199

There are a thousand ways to trick out a Can-Am Spyder. Take a look at ours and let your imagination run wild.

RT LONG-HAUL
ADVENTURE
INSPIRED LOOK



- 1 219400360 ADJUSTABLE VENTED WINDSHIELD
- 2 219400420 15" RT & ST LIMITED EDITION CHROME FRONT WHEEL
- 3 219400650 AKRAPOVIČ SPORT TOURING 3C SILENCER
- 4 219400265 PASSENGER FOOTBOARDS
- 5 219400291 MIRROR ACCENTS

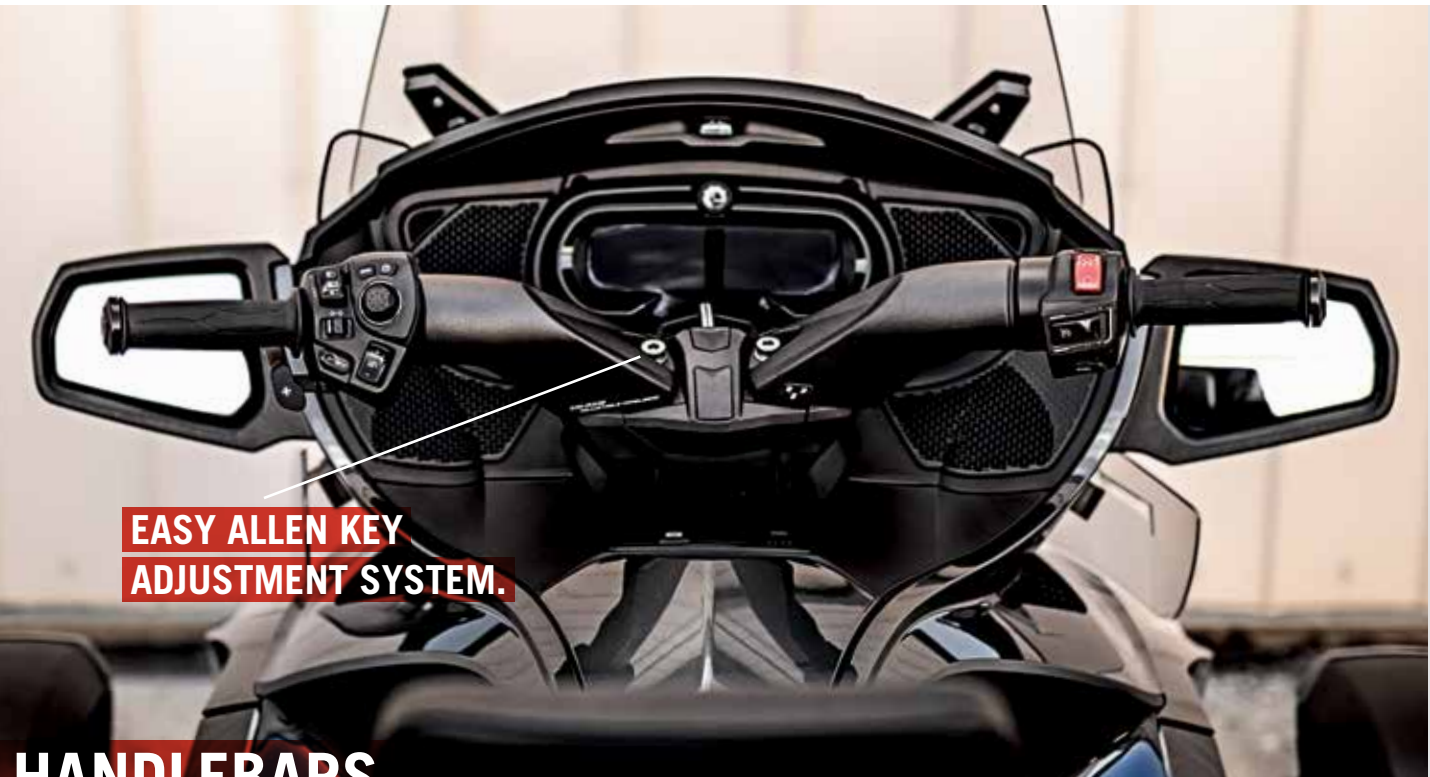
- 6 219400679 ADJUSTABLE DRIVER BACKREST
- 7 219400368 FRONT CARGO LINER
(Not visible on the image above)
- 8 219400321 TOP CASE MIRROR
(Not visible on the image above)
- 9 219400839 RT PASSENGER ARMRESTS

RT LIMITED
GLOBETROTTER
INSPIRED LOOK
DARK EDITION



- 1 219400839 RT PASSENGER ARMRESTS
- 2 219400344 TRI AXIS ADJUSTABLE HANDLEBAR
- 3 219400457 COMFORT SEAT
- 4 219400689 ADJUSTABLE DRIVER BACKREST FOR COMFORT SEAT
- 5 219400246 TOP CASE MOLDED INSIDE LINER
(Not visible on the image above)

- 6 219400502 LOW BROW FRONT FENDERS
- 7 219400854 TRAILER HITCH KIT AND CONTROL MODULE
- 8 219400362 ADJUSTABLE SIDE WIND DEFLECTORS
- 9 219400169 SEMI-RIGID REAR SIDE CARGO TRAVEL BAGS
(Not visible on the image above)



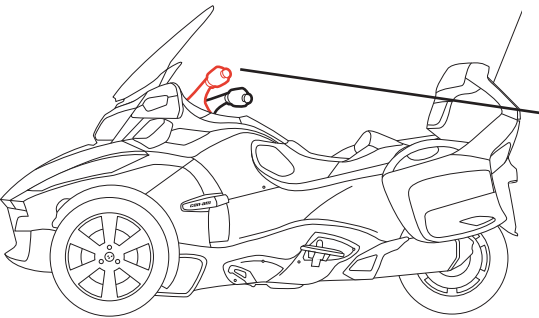
EASY ALLEN KEY
ADJUSTMENT SYSTEM.

HANDLEBARS

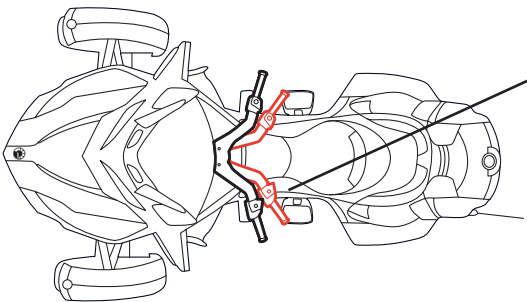
TRI AXIS ADJUSTABLE HANDLEBAR

- State-of-the-art adjustable handlebar reduces fatigue and delivers comfort for all riders thanks to unlimited adjustment possibilities.
- Three different axes allow you to adjust the handlebar in terms of height, width and arm distance.
- Left and right bars are linked together and rotate simultaneously during adjustment.
- Easy Allen key adjustment system.
- Handlebar reuses existing production handgrips, comodo, electrical and clutch cables, and sits directly on the stock steering column.
- GPS Support for the Tri Axis Adjustable Handlebar (219400616) sold separately.

All Spyder RT models
■ 219400344 · Carbon Black
\$659.99



Three different axes enable you to adjust the handlebar height, width and arm distance.



The left and right sides of the bar are linked so they're always in sync.

IDLER PULLEY

RT IDLER PULLEY SERVICE KIT

(Not illustrated)
· Enhances your comfort on the road by reducing vibrations generated by the belt.

Spyder RT models 2014 and up
219800419
\$34.99

SEATS & BACKRESTS

↓
Moving the driver's seat position back just two inches (50 mm) relaxes the knees and upper body.



COMFORT SEAT

- Ultra comfortable with lumbar support.
- Roomier for driver, improves comfort during long rides.
- Driver backrest ready.
- Perfect for taller riders.

All Spyder RT models
■ 219400457 · Black
\$559.99



HEATED COMFORT SEAT

- Heated comfort seat with ability to slide in the driver backrest.
- The driver and passenger can choose their own heat intensity.
- Dual range Hi/Low heat setting.
- Activated through stock passenger and driver heated grip controls.

Spyder RT 2014 and up
■ 219400398 · Black
\$819.99

ADJUSTABLE DRIVER BACKREST SUPPORT - UPGRADE KIT

- Kit adds tilt adjustment to previous generation driver backrests (219400358, 219400479, 219400480, 219400481).
- Kit adds tilt adjustment to previous generation driver backrests (219400478, 219400488, 219400489, 219400490).

For production seats
219400682
\$79.99

For comfort seats
219400683



RT PASSENGER ARMRESTS

- The ultimate in long or short distance passenger comfort.
- Pivot up and out of the way for easy passenger access and exit.
- Styled to ensure an absolute match to your Can-Am Spyder.
- Allow easy access to passenger handles for added safety.

All Spyder RT models
■ 219400839 · Black
\$359.99



ADJUSTABLE DRIVER BACKREST FOR PRODUCTION SEAT

- New tilt adjustment to suit your riding style.
- Unique patent pending plug-and-go design installs in seconds and works with all standard Spyder RT driver seats with no modifications.
- Folds forward for easy passenger seat access.

Spyder RT 2014 and up, RT 2013 and prior with 2014 and up production seats
■ 219400679 · Black
\$399.99

ADJUSTABLE DRIVER BACKREST FOR COMFORT SEAT

- Tilt adjustment to suit your riding style.
- Unique plug-and-go design installs in seconds and works with Spyder RT driver Comfort Seats with no modification.
- Folds forward for easy passenger seat access.

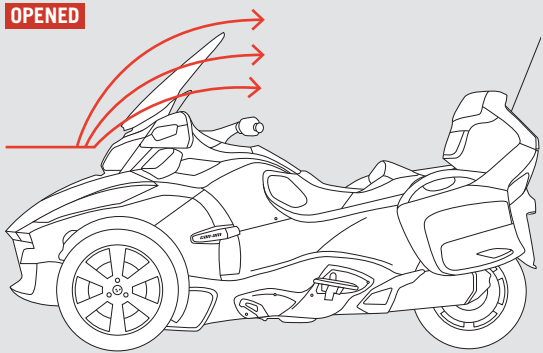
Fits with Comfort Seat (219400457)
Fits with Heated Comfort Seat (219400398)
■ 219400689 · Black
\$449.99



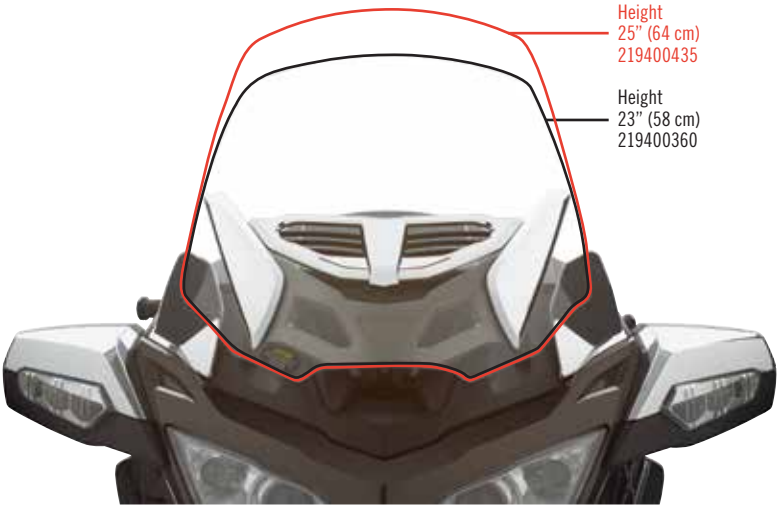
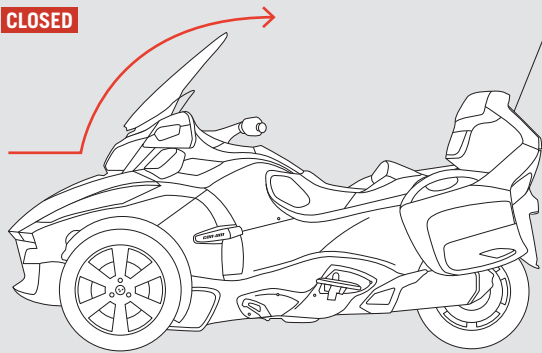
WINDSHIELDS & WIND PROTECTION

YOUR CLIMATE CONTROL

OPENED



CLOSED



Height
25" (64 cm)
219400435

Height
23" (58 cm)
219400360

ADJUSTABLE VENTED WINDSHIELD

- Regulates driver frontal airflow.
- Integrated adjustable vent offers easy infinite management of horizontal slats from closed to fully opened.

All Spyder RT models

25" (64 cm) 219400435 - Clear with chrome \$399.99

23" (58 cm) 219400360 - Clear with chrome \$359.99

LOW WINDSHIELD KIT

All Spyder RT models

219400578 - Smoke \$209.99



VENTED WINDSHIELD

- 2013-2014 standard windshield with openings.

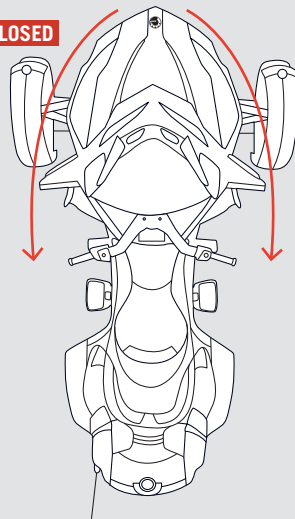
All Spyder RT models

219400415 - Clear \$309.99

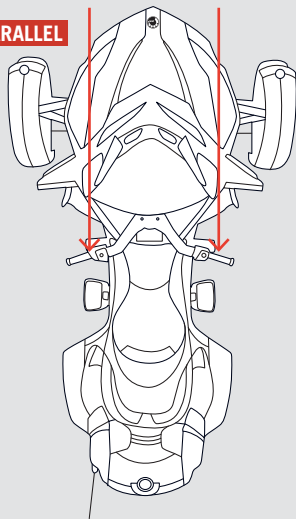


3 ADJUSTABLE SIDE WIND DEFLECTORS PRESET POSITIONS

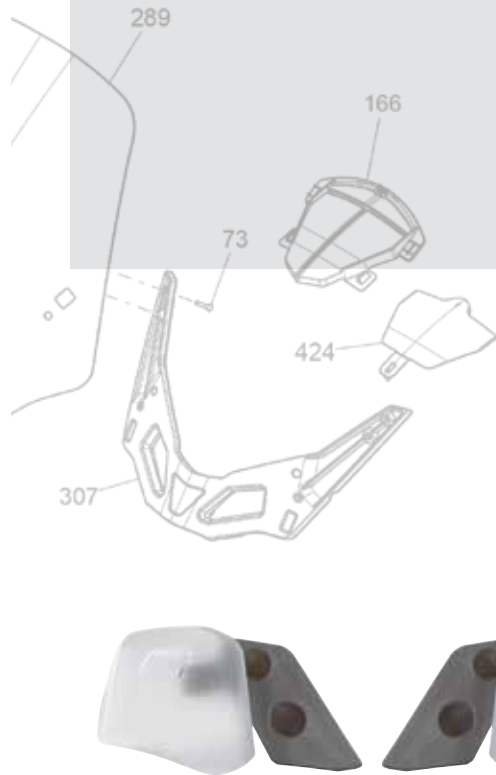
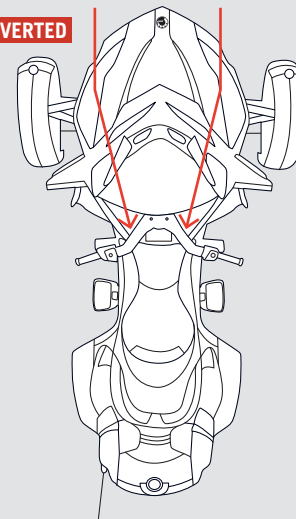
CLOSED



PARALLEL



INVERTED



ADJUSTABLE SIDE WIND DEFLECTORS

- Regulate passenger and driver airflow.
- 3 preset positions (closed, parallel and inverted).
- Easy tool-less click adjustment.

All Spyder RT models

219400362 - Clear \$154.99

All Spyder RT models

219400413 - Chrome \$194.99



Height
25" (64 cm)
219800199

Height
23" (58 cm)
219400243

TOURING WINDSHIELD

- Lower and narrower design for riders looking for less wind protection than provided by the stock Spyder RT model.

All Spyder RT models

H 25" x W 24" (64 cm x 61 cm)

219800199 - Clear \$319.99

H 23" x W 22" (58 cm x 56 cm)

219400243 - Clear \$259.99



TOP CASE MOLDED INSIDE LINER

- Felt insert for finishing touch to rear top cargo compartment.

All Spyder RT models
219400246 · Dark Grey
\$129.99

CARGO & STORAGE

SEMI-RIGID REAR SIDE CARGO TRAVEL BAGS

- Stylish premium travel bags specifically sized to fit in rear side cargo.
- Retractable handle and shoulder straps for carrying convenience.
- Integrated pull tabs for effortless removal from cargo cavity.
- Sold in pairs.

All Spyder RT models
219400169 · Black
\$239.99



SOFT SIDE CARGO TRAVEL BAGS

- Soft travel bags that maximize Spyder RT rear side cargo space.
- Integrated handle for carrying convenience.
- Sold in pairs.

All Spyder RT models
219400172 · Black
\$59.99



NEW

CAN-AM ALL ELEMENT DRY BACKPACK BY OGIO®

- 100% waterproof roll-top construction.
- Generous 7 US gallons (26.5-liter) capacity.
- Back panel allows airflow to keep rider cool.
- Strap-containment system keeps straps secured at high speeds.
- Adjustable sternum strap and dual-density shoulder straps maximize comfort.
- High-visibility 360° reflective screen print and removable high-visibility liner.
- Complete with zippered easy-access front stash pocket and dual-pocket organization panel and laptop/tablet sleeves.

4693020090 · Black
\$139.99



SEMI-RIGID REAR TOP CARGO TRAVEL BAG

- Stylish premium travel bag specifically sized to fit in rear top cargo.
- Retractable handle for carrying convenience.
- Integrated pull tabs for effortless removal from cargo cavity.

All Spyder RT models
219400168 · Black
\$109.99



CAN ALSO DOUBLE AS AIRPLANE CARRY-ON LUGGAGE.



SEMI-RIGID FRONT CARGO TRAVEL BAG

- Rolling travel bag designed to maximize available front cargo space.
- Can also double as airplane carry-on luggage.

All Spyder RT models
219400167 · Black
\$209.99



FRONT CARGO LINER

- Felt insert provides finishing touch to front compartment.
- Features multiple storage pockets.
- Designed to integrate Front Cargo Light (219400623).

Spyder RT 2012 and prior
219400166 · Black

\$159.99
Spyder RT 2013 and up
219400368 · Black
\$134.99



INTEGRATED HELMET BAG

- Truly integrated easy-to-use helmet storage solution.
- Sturdy water-resistant construction.
- Includes elastic straps for tying down helmet bag onto seat.
- Complete with anti-theft wire for added security.

All Spyder F3 and RT models
219400850 · Black
\$59.99



TOP CASE MIRROR

- For rear top cargo cover.
- Folds open, locks up when not in use.
- Offers a small cargo in the top case lid.

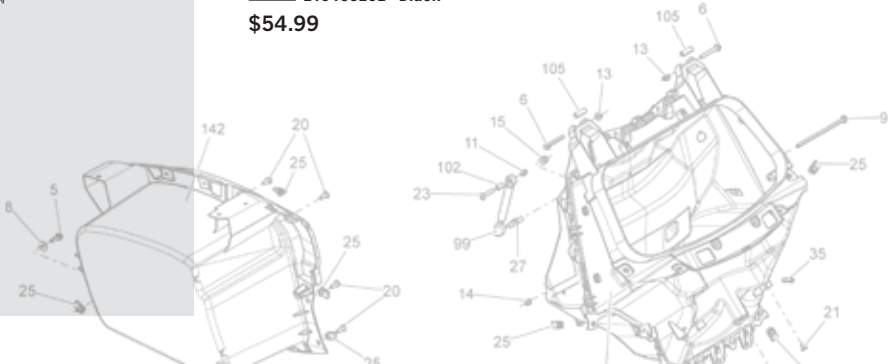
All Spyder RT models
219400321
\$64.99



REAR TOP CARGO SHELF

- For supporting and organizing rear top cargo.
- Two recessed compartments to support electronic accessories.
- Can be tilted to facilitate access to lower section of cargo.

All Spyder RT models
219400232 · Black
\$54.99



LIGHTS & ELECTRICAL ACCESSORIES



CB & COMMUNICATION SYSTEM

- For staying in touch with friends across a range of 40 channels.
- Handlebar controls allow push-to-talk and adjust squelch levels for maximum performance and reception quality.
- Fully integrated system also mutes radio while in transmitting and receiving modes.
- Plug-and-play system controlled via vehicle's cluster.
- Works in conjunction with wired Communication Headset (4474380090).
- Entertainment Harness (219400610) required for installation.
- AM/FM Integrated Audio System (219400464) also required for Spyder RT 2012 and prior models.

Spyder RT 2010-2017
219400611
\$839.99



COMMUNICATION HEADSET (WIRED)

- For rider and passenger. Includes headset and microphone.
- Works in conjunction with the CB & Communication System (219400611) available as an option on the Can-Am Spyder RT models.

4474380090
\$189.99



PUSH-TO-TALK REMOTE FOR PASSENGER

- Passenger communication system (wired) for use with wired headsets and microphones (4474380090).
- Provides passenger with vehicle-to-vehicle communication capabilities with push-to-talk (PTT) button.
- Works in conjunction with the CB & Communication System (219400611), available as an option on the Can-Am Spyder RT models.

4474760090
\$79.99



GARMIN ZUMO 590 GPS

- Features a glove-friendly and sunlight-readable 5" (12.7 cm) dual-orientation touchscreen display.
- Offers hands-free phone control and spoken directions heard in-helmet via Bluetooth 5 technology.
- Includes a MP3 player.
- iPod and Pandora compatibility.
- GPS Support sold separately (219400615/219400616).
- Allows control of music right on the display.
- Rugged and tough enough to withstand fuel spills, UV rays and harsh weather.
- Offers access to real-time weather and traffic information via the smartphone link app.
- Free lifetime map updates.
- Curvy Roads Routing allows rider to find winding roads.

All Spyder models
219400512
219400699 · Europe
\$799.99



GPS SUPPORT FOR TRI AXIS ADJUSTABLE HANDLEBAR

- Support for Garmin Zumo 590 GPS.
- Rotates to suit multiple adjustable handlebar settings.
- Includes casting, electric harness, rubber boot and hardware.
- GPS sold separately.

All Spyder RT models
219400616 · Carbon Black
\$229.99

ADJUSTABLE GPS MOUNTING KIT (FOR STOCK HANDLEBAR)

- (Not illustrated)
- Mounting kit for Garmin Zumo 590 GPS (219400512, 219400699 EC) with adjustable support that fits stock handlebar.
- Includes casting, electric harness, rubber boot and hardware.

All Spyder RT, ST, RS 2013 and up
219400615 · Carbon Black
\$229.99

CELLPHONE INTERFACE KIT

- Electrical harness tucked underneath vehicle allows you to communicate with your Bluetooth cellphone via your headset.
- Requires CB & Communication System (219400611), Entertainment Harness (219400610) and Garmin Zumo 590 GPS (219400512, 219400699 EC).

Spyder RT 2010-2017
219400390
\$114.99



GPS SUPPORT FOR TRI AXIS ADJUSTABLE HANDLEBAR (WITHOUT HARNESS)

(Not illustrated)
All Spyder RT models
219800382
\$59.99

CB ANTENNA REPLACEMENT KIT

- (Not illustrated)
- Includes antenna, antenna base, ground strap and wires.

All Spyder RT models (service kit)
219400317
\$159.99

ENTERTAINMENT HARNESS

- (Not illustrated)
- Required to install the CB & Communication System (219400611) and Satellite Radio Kit (219400612).

Spyder RT 2010-2017
219400610
\$129.99

CGX3 CAMERA

- 160° wide angle lens.
- Resolution options: from 3MP up to 20MP and VGA.
- Video resolutions available: 2.7K at 30 frames per second (FPS), 720P at 120/60/30 FPS, 1080P at 60/30 FPS and VGA at 240 FPS.
- Record videos in 4K UHD at 24 FPS, 2.7K QHD at 30 FPS and 720P at 120 FPS.
- Memory: Class 10 32GB micro SD card.
- 2" (5 cm) capacitive touchscreen.
- Waterproof up to 32.8' (10 m) without a case.

9700130090
\$349.99

- Li-ion battery capacity of 1050mAh, working time of 1/1.5 hours and charging time of 3 hours (2 batteries included).
- WiFi function remotely operates up to 49.2' (15 m) with mobile devices and CYCLOPS app for Android and IOS.
- Features modes such as invert, time lapse, high speed & loop recording, motion detection, capture (while recording a video), burst and anti-sharing.
- Comes with 8 mounting accessories.



CYCLOPS 360° PANORAMIC HD VIDEO CAMERA

- Features a 220-degree wide-angle lens.
- Video resolutions up to 4K at 30 frames per second.
- Professional 16MP quality photos.
- Rugged, light and portable.
- Magnetic mount for vibration-free footage and mounting to any metal surface.
- Comes with 32GB Class 10 micro SD card.

9700020090
\$349.99

- Waterproof case up to 164' (50 m).
- Wi-Fi available to remotely control your camera from your smartphone or computer with the free CGX2 App.
- 16 modes and effects, including driving mode, loop recording, time lapse and slow motion.
- Comes with 10 mounting accessories.
- Compatible with VR goggles.



PASSENGER SPEAKER & AUDIO CONTROLS

- Weatherproof concert-sound-quality rear speaker kit including speakers, pods and passenger controls for full radio tuning.
- Plug-and-play directly into vehicle.
- Fully-equipped wiring harness included.

Spyder RT 2012 and prior
219400150
\$159.99



IPOD INTEGRATION CABLE

- Cable for hooking up an iPod (30 pin connector common to Apple devices) to top cargo's DIN connector.
- Includes 5V transformer.
- Full-feature handlebar control.
- DOT-Matrix visual interface.
- Driver volume control and playlist browser convenience through vehicle's cluster.
- An adapter may be required for latest-generation iPod or iPhone.
- Standard on Spyder RT and ST Limited packages.
- Located in the front compartment on Spyder ST and in rear compartment on Spyder RT.
- Check compatibility with your dealer.

Spyder RT 2014 and up, ST
710002676
\$71.99



POWER OUTLET KIT

- Recharges your electronic devices while riding* (smartphone, MP3, heating gear, etc.).
- Dual port USB connectors.
- Plug-and-play kit.
- Simply connect under driver seat and use.

*The power outlet is not capable of recharging all device types while riding.

All Spyder RT models, RS, ST, F3, F3-S
219400510 · USB
\$29.99

- Adds an extra 12V power outlet to your vehicle.
- Conveniently located in front cargo bin.

All Spyder models
219400366 · 12V
\$34.99



SATELLITE RADIO KIT

- Receiver helps maintain radio reception everywhere.
- 150+ digital channels to choose from.
- 15 station presets for quickly tuning into your favorite programming.
- Plug-and-play system controlled via vehicle's cluster.
- Fee-based monthly subscription required.
- Entertainment Harness (219400610) required for installation.
- AM/FM Integrated Audio System (219400464) is also required for Spyder RT 2012 and prior.
- Headset sold separately.

Spyder RT 2010-2017
219400612
\$479.99

3.5 MM AUDIO PLAYER INPUT

- 3.5 mm cable for hooking up a MP3 player to top cargo's DIN connector.
- Driver volume control convenience through vehicle's cluster.

Spyder RT 2014 and up, ST
710001406
\$36.99



FOG LIGHTS

- (Not illustrated)
- Enhance low beam light for better visibility at ground level and on sides.
- Uniquely styled halogen fog lamps feature a 35W bulb and clear lens with a faceted inner reflector.
- Easy installation.
- Not EC compliant.

All Spyder RT models
219400579
\$529.99

REPLACEMENT N-TOUCH COVERS FOR COMMUNICATION SYSTEM DIN CONNECTORS

- (Not illustrated)
- All Spyder RT models (service kit)
219400315 · Black
\$12.99

WHEELS



15" SHAMROCK WHEELS

- Add personality to your Can-Am Spyder.
- Casted, painted and machined wheels.
- Sold in pairs.

All Spyder F3 and RT models, RS, ST 2013 and up

219400500 · Deep Black

\$609.99



15" FAT 6 CHROME WHEELS

- Same design as Spyder F3 production wheels in PVD finish.
- Sold in pairs.

All Spyder F3 and RT models, RS, ST 2013 and up

219400589 · Chrome

\$719.99



14" CHROME WHEELS

- Sold in pairs.

Spyder RT 2012 and prior

219400256 · Chrome

\$659.99



15" RT & ST LIMITED CHROME FRONT WHEELS

- Premium cast aluminum 15" 12-spoke mags.
- Sold in pairs.

All Spyder F3 and RT models, RS, ST 2013 and up

219400420 · Chrome

\$719.99



CHROME REAR WHEEL

- 6-spoke PVD — chrome-like powder-coat, more resistant than regular chrome — monobloc rear wheel (hub and wheel in one piece).

All Spyder F3 and RT models, RS, ST 2013 and up

219400574 · Chrome

\$659.99

All Spyder 2012 models and prior

219400575 · Chrome

\$659.99



15" BLADE MAG WHEELS

- Unidirectional design (left and right wheel).
- Patented casting process allows a weight reduction of 2.2 lbs (1 kg) per wheel compared to stock wheels.
- Sold in pairs.

All Spyder F3 and RT models, RS, ST 2013 and up

219400465 · Black

\$659.99



12-SPOKE MAGS.



15" TWIN-BLADE WHEELS

- Premium cast aluminum 15" 6 twin-blade spoke mags.
- Sold in pairs.

All Spyder F3 and RT models, RS, ST 2013 and up

219400357 · Carbon Black

\$559.99

15" BLADE MAG WHEELS SERVICE KIT

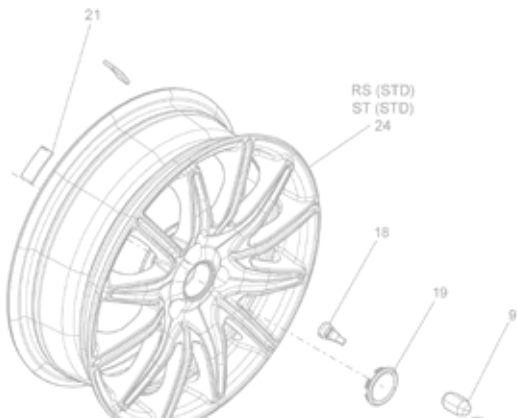
(Not illustrated)

- Replacement "blade" for wheels.

219400542 Left · Brushed Aluminum

219400543 Right · Brushed Aluminum

\$24.99



FENDERS



You can make any year Can-Am Spyder look like the latest by simply changing the fenders.



LOW BROW FRONT FENDERS

- Super sleek drawn steel fenders with LED position lights integrated into the front edge.
- Include electrical harness and required hardware.
- Sold in pairs.
- LED position lights not EC compliant.

All Spyder RT models, RS, ST 2013 and up, all Spyder F3 models 2018 & prior

219400502 · Carbon Black

\$949.99



FRONT FENDERS

- Sporty look with a slim profile and integrated position lights and reflectors.
- Front Fender Supports (219400359) are required (sold separately).
- Sold in pairs.

All Spyder F3 and RT models, RS, ST 2013 and up

219400423 · Pure Magnesium

219400424 · Satin Black

219400467 · Pearl White

\$259.99



FRONT FENDER SUPPORTS

- Supports for Front Fenders, including position lights, reflectors and hardware.
- Front Fenders sold separately.
- Sold in pairs.

All Spyder F3 and RT models, RS, ST

219400359 · Black

\$399.99



CUSTOM ACCESSORIES

WINDSHIELD SUPPORT

· Complete with mounting hardware.

All Spyder RT models

219400298 · Chrome

\$319.99



WINDSHIELD TRIM

All Spyder RT models

219400191 · Chrome

\$64.99



HANDLEBAR COVER

· Complete with hardware and black center cap.

All Spyder RT models

219400263 · Chrome

\$309.99



HANDLEBAR END CAPS

· Sold in pairs.

All Spyder models

219400702 · Chrome

\$41.99



LOWER WIND DEFLECTORS

· Hardware included.
· Sold in pairs.

All Spyder RT models

219400290 · Chrome

\$104.99



UPPER WIND DEFLECTORS

· Hardware included.
· Sold in pairs.

All Spyder RT models

219400262 · Chrome

\$104.99



MIRROR ACCENTS

· Chrome accents to upgrade your mirrors.
· Sold in pairs.

All Spyder RT models

219400291 · Chrome

\$99.99



AIR INTAKE TRIMS

· Sold in pairs.

All Spyder RT models (except models with Fog Lights)

219400196 · Chrome

\$124.99



LOWER SPOILER TRIMS

· Sold in pairs.

Spyder RT 2013 and prior

219400194 · Chrome

\$154.99



SIDE CAN-AM TRIMS

· Sold in pairs.

All Spyder RT models

219400195 · Chrome

\$84.99



REAR TOP CARGO TRIM

All Spyder RT models

219400192 · Chrome

\$84.99



DRIVER FOOTBOARDS

· Replace stock pegs on SE5 and SE6 models.
· Sold in pairs.

Spyder RT-S SE5, SE6 2013 and up

219400582 · Chrome

\$999.99



PASSENGER FOOTBOARDS

· Complete chrome passenger footboards assembled with rubber insulation pads.
· Mounting hardware included.
· Sold in pairs.

All Spyder RT models

219400265 · Chrome

\$279.99



DRIVER FOOTPEGS

· Chrome pegs assembled with rubber insulated pads.
· Mounting hardware included.
· Sold in pairs.

All Spyder RT models

219400264 · Chrome

\$204.99

EXHAUST TIP AND HEAT SHIELD

· Kit for custom finishing your stock exhaust system.
· Includes chrome end pipe, heat shield and hardware.

All Spyder RT models, RS, ST, F3-T, F3 Limited

219400473 · Chrome

\$299.99



FOOTPEG SUPPORT CASTINGS

· Remounting hardware included.
· Peg and footboard sets sold separately.
· Sold in pairs.

Spyder RT 2012 and prior

219400268 · Chrome

\$599.99





VELOCITY
SENSITIVE.

FOX ADJUSTABLE FRONT SHOCK KIT

- Velocity sensitive, bolt on suspension upgrade specially tuned for Spyder RT.
- Includes stiffer springs and adjustable preload to adapt to your riding style and reduce body roll.
- Fully serviceable and rebuildable.
- Part of the Podium Performance Series, delivers great performance and comfort.

Spyder RT 2014 and up
219400588
\$509.99



AKRAPOVIČ SPORT TOURING SILENCER

· Not AS certified.
Spyder RT 2013, RS, ST 2013 and up (991 engine)
219400443 · Titanium
\$919.99

AKRAPOVIČ SPORT SILENCER

· Not AS certified.
Spyder RT 2013, RS, ST 2013 and up (991 engine)
219400444 · Titanium
\$919.99

AKRAPOVIČ SPORT TOURING 3C SILENCER

- Set your ride apart with the dynamic, deep resonant sound of an Akrapovič silencer.
- Its premium titanium and carbon fiber construction is 55% lighter than stock model and it's been tested to meet the most stringent requirements.
- Not AS certified.

All Spyder RT models, F3-T, F3 Limited
219400650 · Titanium · Canada / US
219400838 · Titanium · Other countries
\$999.99

AKRAPOVIČ SPORT SILENCER HEAT SHIELD REPLACEMENT KIT

(Not illustrated)
Spyder RT 2013, RS, ST 2013 and up (991 engine)
219400517
\$259.99



All Can-Am Spyder accessory exhaust systems meet all the most stringent EPA, CARB & EC standards.

AKRAPOVIČ SILENCERS TOP FEATURES

- Innovative Design. First hexagonal shaped silencers.
- The best materials. Premium titanium shell construction with carbon fiber end cap and heat shield render these silencers 55% lighter than the stock silencer.
- The unmistakable sound of Akrapovič. Deep resonant sound that you won't hear anywhere else.
- EPA, CARB and EC certified. Rigorous measurement, testing and quality control ensure silencers meet the most stringent standards.
- Exhaust fit compatible with all BRP genuine accessories.

AKRAPOVIČ SPORT TOURING SILENCER HEAT SHIELD REPLACEMENT KIT

(Not illustrated)
Spyder RT 2013, RS, ST 2013 and up (991 engine)
219400516
\$259.99

CAN-AM FREEDOM TRAILER



PUT LONG DISTANCE WORRIES BEHIND YOU.

"The Can-Am Freedom Trailer is a hands-down winner in features and performance offered at this price."

— Fred Rau, Can-Am Spyder Ambassador and enthusiast

Advanced technology, design and bold styling come together to deliver an exceptional trailering experience – so you can head out with everything you need for as long as you want.

- Independent suspension with coil-over shocks and low trailer floor provide a stable, smooth ride.
- Can-Am Spyder RT, ST, F3-T and F3 Limited Vehicle Stability System adapt to the trailer.
- Hinged lid opens wide for easy loading.
- Lid opens with one hand and stays open with air-spring assist.
- Interior's flat bottom and optimized shape maximize capacity. Capacity: 20 ft³/566 L.
- Easily holds enough for two travellers, or two golf bags.
- The only trailer that maintains vehicle factory warranty.

2-YEAR WARRANTY



CAN-AM FREEDOM TRAILER
All Spyder RT models, ST, F3-T, F3 Limited
000T1KA00 - Black
\$3,399.99



TRAILER HITCH KIT AND CONTROL MODULE

- Heavy-duty trailer hitch specifically designed for use in conjunction with Can-Am Freedom Trailer.
- Patent pending impact-absorbing mechanical design ensures maximum trailer and vehicle performance.
- Meets all stringent vehicle safety requirements.
- Integrated mud flap reduces damage from rock chips and other debris.
- Wiring components and full-function light control module included.
- Installs and removes easily.
- Only system on the market that maintains vehicle warranty requirements.

Spyder RT 2010 - 2017

219400432

\$529.99

Spyder ST

219400431

\$569.99

Spyder F3-T, F3 Limited 2016-2017

219400519

\$569.99

Spyder F3-T,

F3 Limited 2018 and up

219400852

\$569.99

Spyder RT 2018 and up

219400854

\$664.98



INSTALLS AND
REMOVES EASILY.



TRAILER STORAGE COVER

- 100% polyester with integrated storage pocket.
- Product may differ from picture shown.

Can-Am Freedom Trailer

■ 219400592 · Black

\$144.99



FREEDOM TRAILER PREMIUM CHROME TRIMS

- Made of high quality ABS thermoplastic.
- Contains left (1), right (1) and rear (1) trims.
- Rubber molding to protect trailer paint included.

Can-Am Freedom Trailer

■ 219400587 · Chrome

\$289.99

TRAILER TONGUE STAND

- (Not illustrated)
- Keeps trailer leveled when not hitched to vehicle.

Can-Am Freedom, RT-622 Trailers

219400190

\$99.99

CONTROL MODULE HARNESS SERVICE KITS

- (Not illustrated)
- Allows installation of the Trailer Hitch (219400519) and the Trailer Hitch and Control Module (219400432).
- Allows installation of the Trailer Hitch Kit and Control Module (219400854).

Spyder RT 2010 - 2017

219400893

\$39.99

\$39.99

- Allows installation of the Trailer Hitch (219400852).

Spyder F3-T,

F3 Limited 2016-2017

219400855

\$39.99



4-PIN TRAILER ADAPTOR HARNESS

- Designed to convert the trailer's electrical harness into a standard 4-pin trailer connector for automotive use.

Can-Am Freedom, RT-622 2013-2014 Trailers

219400437

\$79.99



PREMIUM CARPET

- Crafted from virtually indestructible thermoplastic.
- Computer-cut for a precision fit in your vehicle.

Can-Am Freedom Trailer

219400538

\$259.99



SPARE WHEEL TIRE BAG

- Spare tire transportation bag with integrated clipping system to secure tire in trailer.

Can-Am Freedom, RT-622 Trailers

■ 219400307 · Black

\$59.99

CAN-AM FREEDOM TRAILER STRIPE DECAL KIT

- Premium stripe decals add a sporty look to match the Freedom Trailer to your Can-Am Spyder.

Can-Am Freedom Trailer

■ 219400669 · Can-Am Red

■ 219400671 · Gloss White

■ 219400672 · Intense Red

■ 219400674 · Magma Red

■ 219400675 · Matte Black

■ 219400676 · Pure Magnesium

■ 219400677 · Satin Silver

■ 219400678 · Vegas White Pearl

■ 219400693 · Orbital Blue

\$249.99





F3 LIMITED TRAILERING COVER

- Made of durable, 100% waterproof, fully-breathable 300-denier polyester.
- Easy-on / easy-off system ensures cover is secure in all trailering conditions.
- Equipped with integrated exhaust panel and no-scratch flannel windshield liner.
- Compatible with all stock and accessory seats regardless of passenger or driver backrests, passenger armrests, windshield, or top case.



**F3-T (with optional top case),
F3 Limited 2017 & up**

**219400768 · Black
\$249.99**

F3-T TRAILERING COVER

- Made of durable, 100% waterproof, fully-breathable 300-denier polyester.
- Easy-on / easy-off system ensures cover is secure in all trailering conditions.
- Equipped with integrated exhaust panel and no-scratch flannel windshield liner.
- Compatible with all stock and accessory regardless of passenger or driver backrests, passenger armrests, or windshield.
- Incompatible with top case.



Spyder F3-T, F3 Limited 2016

**219400751 · Black
\$229.99**

OUTDOOR COVER

- Durable solution-dyed UV and mildew-resistant 100-denier polyester construction.
- Soft inner liner protects windshields up to Tall Boy Windshield (219400596).
- Compatible with F3-T with or without passenger and driver backrests.
- Also compatible with all F3 windshields.
- Incompatible with Passenger Armrests (219400726).



Spyder F3-T, F3 Limited 2016

**219400603 · Black
\$259.99**

OUTDOOR COVER

- Durable solution-dyed UV and mildew-resistant 100-denier polyester construction.
- Inner liner protects windshield.
- Easy maintenance.

Spyder F3, F3-S

**219400495 · Black
\$229.99**



TRAVEL COVER

- Provides protection to vehicle's top areas.
- Stows conveniently into front bin and takes up little space.
- Easy to install and remove.

Spyder F3, F3-S

**219400496 · Black
\$164.99**



TRAVEL COVER

- Start your morning ride with a dry, clean seat.
- Protects the top surfaces of your vehicle and stows compactly in the front compartment, making it a great road trip companion.

Spyder F3-T, F3 Limited 2016

**219400604 · Black
\$159.99**



DRIVER SEAT RAIN COVER

- 100% waterproof driver-seat protection.
- Fits all stock or accessory seats.
- Compatible with Driver Backrest.
- Quick installation and removal.

All Spyder F3 models

**219400648 · Black
\$39.99**



PASSENGER SEAT RAIN COVER

- 100% waterproof passenger seat protection.
- Fits all stock or accessory seats.
- Compatible with Passenger Backrest and Short Rail.
- Quick installation and removal.

**Spyder F3, F3-S and F3-T standard seat,
Coast-to-coast Seat, Cannonball Seat**

**219400649 · Black
\$34.99**



SPYDER RT



CUSTOM VEHICLE COVER

- Made of tough water-repellent, breathable 300-denier polyester.
- This cover provides maximum vehicle protection while trailering or outdoor storing.
- Includes integrated exhaust panel and protective flannel windshield liner.
- Easy attach system secures cover in all trailering conditions.
- Compatible with RT Passenger Armrests (219400839).

All Spyder RT models

**219400860 · Black
\$249.99**



TRAVEL COVER

- Provides protection to vehicle's top areas (windshield, seat, top cargo).
- Stows conveniently into top cargo and takes up little space.
- Quick installation and removal.

All Spyder RT models

**219400199 · Black
\$114.99**



SEAT RAIN COVER

- 100% waterproof seat protection.
- Fits all stock or accessory seats.
- Compatible with Driver Backrest.
- Quick installation and removal.

All Spyder RT models

**219400722 · Black
\$99.99**

SPYDER RS & ST



OUTSIDE STORAGE COVER

- Durable solution-dyed UV and mildew-resistant 100-denier polyester construction.
- Inner liner protects hood and windshield.
- Easy maintenance.
- Fits models with Ultra Touring Windshields (219400306/219400354) and Passenger Backrest (219400350).

Spyder RS, ST

**219400448 · Black
\$209.99**



INDOOR STORAGE COVER

- Soft, non-abrasive, breathable polyester construction allows condensation to escape when vehicle is in storage.
- Easy clean fabric with Scotchgard® treatment.

Spyder RS

**280000338 · Black
\$159.99**



LIGHT TRAVEL COVER

- Provides vehicle's seating, handlebar and windshield areas with outdoor temporary/overnight protection.
- Compact size makes it convenient for traveling.

Spyder RS

**219400275 · Black
\$144.99**

Spyder RS, ST

**219400449 · Black
\$159.99**



TIE-DOWN KIT

- Specifically designed to secure your Can-Am Spyder while trailering.
- Attach your vehicle to 3 or 4 anchor points, depending on your trailer.
- Pack of 4.

**219400200
\$114.99**

RIDING GEAR

Look beyond the horizon, to all of those unseen, unexplored destinations that never seem to stop calling you. Listen to your heart and head out... anywhere. In fact, the farther the better. Don't just live your dreams; ride them – intensely, completely, and without hesitation. Anywhere you're headed is home when you're riding the Can-Am On-Road experience.



**LIFE'S
BETTER
WITHOUT
LIMITS.**



JACKETS



CRUISE JACKETS 440733/440734



KATE MESH JACKET 440736

**LOOK
AS GOOD
AS YOU
RIDE.**



CALIBER JACKETS 440822/440823



RUSSELL MESH JACKET 440676



CALIBER JACKET 440823



VOYAGER JACKET 440824



CALIBER JACKET 440822



CRUISE JACKET 440734

JACKET TECHNOLOGY

Use this guide to find the features you want by looking for the corresponding symbol among our extensive collection of jackets.



100% waterproof
To keep dry in all conditions.



Water-resistant
To keep dry in light rain conditions or during short rides.



Windproof
To protect from air infiltration.



Removable insulated lining
To adapt to the current temperature. Wear when cold, remove when warm.



Adjusted fit
Fits closer to the body.



Relaxed fit
Looser fit for relaxed riding position.



Pockets for removable protectors
Pouches to insert removable protectors.



RPM



RPM MAX

HIGH PERFORMANCE GEAR WITH RPM TECHNOLOGY

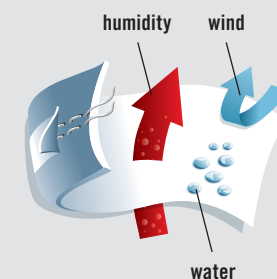


Critical seams and logos are sealed, so water can't enter through potential openings.



100 % of seams and logos are sealed, so water can't enter through potential openings.

RPM & RPM MAX
Coatings keep wind and air out and still allow perspiration to escape.





MEN'S & LADIES' CALIBER JACKETS

FEATURES

- Teflon[®]-treated highly wear-resistant fabric with all critical seams sealed.
- Extensive chest-area ventilation.
- Cushioned collar edge prevents chafing.
- Back armhole gussets improve movement & flexibility.
- Shaped sleeves.
- Multi-adjustable biceps, forearms, wrists, and waist.
- Napoleon pocket, 2 easily accessible exterior pockets & 1 interior pocket.
- Includes no less than 150cm² reflective safety trim.

Shell: Nylon
Insulation: Polyester



BENEFITS

- Superior comfort in almost any weather condition.
- High breathability ensures dryness.
- Highly-durable for extended wear and long-distance rides.
- Easily adjustable for optimum mobility.
- Enhanced low-light & nighttime visibility for added safety.



NEW

MEN'S CALIBER JACKET

440822 · S, M, L, XL, 2XL, 3XL · Red (30), Black (90)

\$279.99



NEW

LADIES' CALIBER JACKET

440823 · XS, S, M, L, XL, 2XL, 3XL · Charcoal Grey (07), Black (90)

\$279.99



Learn everything about the technology built into the Cruise Jackets.
Go to: canamonroad.com/videos

MEN'S & LADIES' CRUISE JACKETS

FEATURES

- Teflon-treated highly wear-resistant fabric.
- Shaped sleeves.
- Action pleat gussets at back armhole for extra comfort and ease of movement.
- Critical seams sealed.
- Chest and back ventilation.

- Multi-adjustable biceps, wrist and waist openings.
 - Reflective details at back.
 - May require rain suit in heavy rain conditions.
- Shell: Nylon, Other fabric
Insulation: Polyester

BENEFITS

- Outstanding ventilation, lightweight for extra comfort.
- Breathable to keep you dry.
- Excellent flexibility and rider fit.
- Wind and water protection.
- Ultra-durability and wear resistance.
- Convenience, good practicality, and nighttime visibility.



MEN'S CRUISE JACKET
440733 · S, M, L, XL, 2XL, 3XL · Charcoal Grey (07)
\$259.99



LADIES' CRUISE JACKET
440734 · XS, S, M, L, XL, 2XL · White (01)
\$259.99



MESH

Watch the Russell and Kate Mesh Jackets' work features.
Go to: canamonroad.com/videos

RUSSELL & KATE MESH JACKETS

FEATURES

- Made of highly breathable mesh.
- No collar.
- Shaped sleeves.
- Adjustable waist, biceps, forearms and sleeves openings.
- 3M[®] reflective details at back.

Shell: Polyester, Nylon
Insulation: Polyester

BENEFITS

- Lightweight comfort with outstanding breathability.
- Excellent flexibility and rider fit.
- Convenience, practicality, and nighttime visibility.



RUSSELL MESH JACKET
440676 · S, M, L, XL, 2XL, 3XL · Black (90)
\$199.99



KATE MESH JACKET
440736 · XS, S, M, L, XL, 2XL · Black (90)
\$199.99



PLUS SIZE
COLLECTION

TEXTILE

MEN'S & LADIES' VOYAGER JACKETS



FEATURES

- All critical seams sealed.
- Wear-resistant fabric.
- Chest-area ventilation.
- Cushioned collar edge prevents chafing.
- Side-bottom and back armhole gussets.
- Shaped sleeves.
- Multi-adjustable biceps, wrists, and waist.
- Adjustable back-waist level.
- Napoleon pocket, 4 easily accessible exterior pockets & 1 interior pocket.
- Includes no less than 150cm² reflective safety trim.
- Shell: Nylon
- Insulation: Polyester

BENEFITS

- Excellent comfort & protection in many weather conditions.
- High breathability ensures dryness.
- Easily adjustable for optimum mobility.
- Extended-wear durability.
- Low-light & nighttime visibility for added safety.

NEW

MEN'S VOYAGER
JACKET

440824
L PLUS, XL PLUS,
2XL PLUS, 3XL PLUS,
4XL PLUS
Black (90)
\$349.99



NEW

LADIES' VOYAGER
JACKET

440825
M PLUS, L PLUS,
XL PLUS, 2XL PLUS,
3XL PLUS, 4XL PLUS
Black (90)
\$349.99



ALL
CRITICAL
SEAMS
SEALED.



MESH

Learn more about the Shaun and Emma Plus Mesh Jackets.
Go to: canamonroad.com/videos

SHAUN PLUS & EMMA PLUS MESH JACKETS

FEATURES

- Made of highly breathable mesh.
- No collar.
- Shaped sleeves.
- Action pleat gussets at back armhole for extra comfort and ease of movement.
- Adjustable waist, biceps and sleeves openings.
- 3M reflective details at back.
- Shell: Polyester, Nylon
- Insulation: Polyester



SHAUN PLUS MESH JACKET

440738 · L PLUS, XL PLUS, 2XL PLUS, 3XL PLUS, 4XL PLUS, 5XL PLUS · Black (90)
\$249.99



EMMA PLUS MESH JACKET

440739 · M PLUS, L PLUS, XL PLUS, 2XL PLUS, 3XL PLUS · Black (90)
\$249.99

BENEFITS

- Outstanding breathability and extra roominess, for comfort.
- Excellent flexibility and rider fit.
- Convenience, practicality, and nighttime visibility.



TECHNICAL WEAR



Men's

Ladies'

NEW

WINDPROOF FLEECE

- Lightweight, quick-dry water-resistant, and windproof.
- Brushed soft micro polyester interior.
- Offset front zipper for added comfort around collar (2-way center front zipper on ladies' model).
- Soft shell design delivers enhanced comfort.
- Lycra inner wrist with lengthened riding cuff.
- 2 exterior hand pockets.
- 4-way reflective details for added visibility.

Polyester, Spandex

Men's · 454130 · S, M, L, XL, 2XL, 3XL · Black (90)

Ladies' · 454129 · XS, S, M, L, XL, 2XL · Black (90)

\$129.99



Men's

Ladies'

NEW

WINDPROOF PANTS

- Windproof, water-resistant soft shell.
- Brushed fabric interior for exceptional comfort.
- Ergonomic high-back design with shaped knees.
- Accommodates belts.
- 2 back, 2 hip and 1 zippered thigh pocket offer practicality & convenience.

Polyester, Spandex

Men's · 441637 · 30, 32, 34, 36, 38, 40, 42, 44 · Black (90)

Ladies' · 441638 · 6, 8, 10, 12, 14, 16, 18 · Black (90)

\$99.99

- Plus-sized tailored for a more flattering, comfortable fit.

Men's Plus size · 441641 · 46, 48 · Black (90)

Ladies' Plus size · 441642 · 20, 22 · Black (90)

\$109.99



CAN-AM TECHNICAL JACKET

- Soft shell combines light insulation, breathability and weatherproofing.
- 4-way stretch fabric.
- Also ideal for wearing as an insulating first layer on cold days.
- Reflective details.
- 2 hand pockets with YKK® water-resistant zipper.
- Back ventilation.
- Pre-shaped sleeves.
- Adjustment at hem.

Polyester, Spandex

Men's · 453755 · S, M, L, XL, 2XL, 3XL · Black (90)

Ladies' · 453754 · XS, S, M, L, XL, 2XL · Black (90)

\$99.99



RAIN GEAR

Learn the features and technologies of the Rain Jacket.
Go to: canamonroad.com/videos

RAIN JACKET

- Made of waterproof and windproof Teflon-treated light PVC nylon.
- Balaclava hood sewn into the jacket for use under the helmet while riding, to avoid water infiltration during a downpour.
- Back ventilation for moisture evacuation.
- Shaped sleeves.
- Two Velcro® waist pockets with flap.
- Reflective details at front and back.
- Jacket folds into back pocket.
- To wear over riding jacket, order one size up or try it on over your riding jacket to ensure it fits.

Shell: Waterproof Nylon

440568 · XS, S, M, L, XL, 2XL, 3XL · Black (90)

\$99.99



RAIN PANTS

- Elasticized waist.
- Velcro-hemmed wide side leg gusset for slipping pants on while wearing boots.
- Elastic at bottom leg to prevent pants from riding up.
- Folds into jacket's back pocket for easy traveling.
- To wear the pants over clothes, order one size up or try them on over your clothes to ensure they fit.
- Ladies: order one size smaller.

Shell: Waterproof Nylon

441501 · XS, S, M, L, XL, 2XL, 3XL · Black (90)

\$59.99



FOOTWEAR

SPYDER RIDING BOOTS

- Perfect for rain or cold weather.
- Water-repellent leather.
- Hipora waterproof breathable membrane with 100% polyester lining padded with open cell foam for better comfort.
- 3M® Scotchlite® reflective detail on back.
- High-tech rubber composite sole.
- Sole structure offering a good grip under all conditions.
- Molded nylon shin guard backed with shock absorbing material.

444208 · 7, 8, 9, 10, 11, 12, 13 · Black (90)

See p.91 for European footwear equivalencies.

\$179.99

- Molded nylon ankle guard.
- Injected thermoplastic polyurethane toe pad for shifting gears.
- Techno GI® thermoplastic toe cap.
- Pre-formed orthopedic vibration-absorbing sole.
- Anti-crush tempered steel shank.
- Anti-twist sole.

Leather, Polyurethane



HELMETS & ACCESSORIES



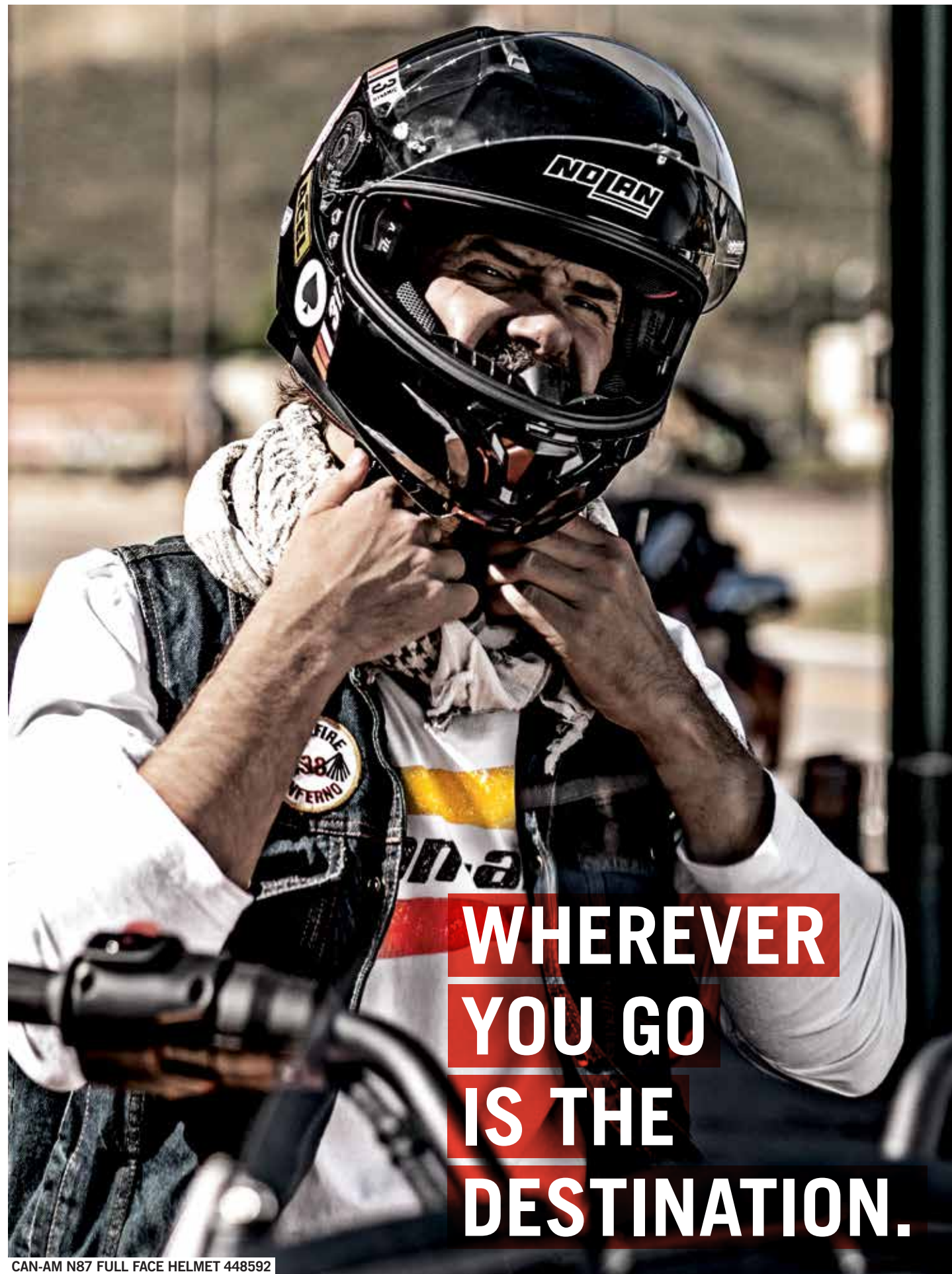
CAN-AM N87 FULL FACE HELMET 448592



CAN-AM N40-5 JET HELMET 448572



CAN-AM N100-5 MODULAR HELMET 448571



CAN-AM N87 FULL FACE HELMET 448592



OPEN FACE HELMETS

CAN-AM N40-5 JET HELMET

FEATURES

- Ultra-wide scratch-resistant visor.
- Multi-adjustable anti-fog scratch-resistant VPS¹ sunshield with UV400 protection.
- Exclusive AirBooster¹ technology drives innovative ventilation system.
- Integrated chin straps.
- Fully N-Com[®] System-ready.
- ECE version not available in North America.

Shell: Lexan[®] Polycarbonate

BENEFITS

- Delivers a superior field-of-vision for a safer ride.
- Engineered for superior anti-glare, anti-fog capability.
- Ultra-comfortable, and equipped with intelligent ventilation for superior temperature and humidity control.

DOT ECE22.05



NEW

CAN-AM N40-5 JET HELMET

448572 · DOT · White (01), Magnesium (24), Matte Black (93)
448591 · ECE · Matte Black (93)
XS, S, M, L, XL, 2XL

\$234.99



CAN-AM N21 DURANGO OPEN FACE HELMET

DOT ECE22.05

FEATURES

- Minimalist retro design.
 - Super-strong lightweight Lexan polycarbonate shell.
 - Replaceable anti-scratch inner visor.
 - Fully removable, washable liner.
 - Microlock¹ quick-release chin strap.
 - Complete with protective storage pouch.
- ECE version not available in North America.
Shell: Lexan[®] Polycarbonate

BENEFITS

- Superior quality and great look.
- High-impact resistance and comfort.
- Good visibility and practicality.
- Anti-bacterial, anti-fungal and moisture wicking for added comfort and hygiene.
- Added safety and convenience.



CAN-AM N21 DURANGO OPEN FACE HELMET

448481 · DOT
448482 · ECE
S, M, L, XL, 2XL, 3XL · Matte Black (93)

\$189.99



FULLY
N-COM
SYSTEM-READY.

CROSSOVER HELMET

CAN-AM N40-5 GT CROSSOVER HELMET

DOT ECE22.05

FEATURES

- Fully N-Com System-ready.
- Super-strong lightweight, aerodynamically-tuned polycarbonate shell with integrated spoiler.
- Exclusive Crossover technology.
- Optically-correct face shield protects the entire face while offering a large eye port and can be changed in seconds.
- Exclusive Vision Protection System (VPS[®]) features a scratch-resistant, anti-fogging, UV400 sunshield that raises or lowers in an instant.
- Innovative AirBooster multi-vent airflow system.
- Fully removable, washable Clima-Comfort[®] liner, adjustable cheek pads.
- Velour-padded chinstrap with Microlock quick-release retention system.
- Removable protective chin guard with air intake.
- Complete with chin guard plugs, side covers and helmet storage pouch.

ECE version not available in North America.

Shell: Lexan[®] Polycarbonate

BENEFITS

- Improved performance, stability and excellent high-impact resistance.
- Ultra-convenient accessory addition or replacement, maintenance, and customization.
- Added safety, exceptional field of vision and convenience.
- Protection against sun, glare, and condensation.
- Exceptional ventilation for improved temperature control.
- Anti-bacterial, anti-fungal and moisture wicking for added comfort and hygiene.
- Convenience and comfort.



CAN-AM N40-5 GT CROSSOVER HELMET

448569 - DOT - White (01), Magnesium (24), Black (90)
448570 - ECE - White (01), Magnesium (24)
XS, S, M, L, XL, 2XL -

\$279.99

ONE HELMET, FOUR LOOKS

Quick-change accessories allow you to customize the look and features for every ride.





MODULAR HELMET

CAN-AM N100-5 MODULAR HELMET

FEATURES

- Fully N-Com System-ready.
- Super-strong lightweight, aerodynamically-tuned polycarbonate shell with integrated spoiler.
- Optically-correct UV400 face shield protects the entire face while offering a large eye port and can be changed in seconds.
- Exclusive Vision Protection System (VPS) features a scratch-resistant, anti-fogging, sunshield that raises or lowers in an instant.
- Innovative AirBooster multi-vent airflow system.
- Fully removable, washable Clima-Comfort liner, adjustable cheek pads.
- Velour-padded chinstrap with Microlock quick-release retention system.
- Eyewear compatible.
- Pinlock⁺ fog-resistant inner visor.
- Shell: Lexan⁺ Polycarbonate

BENEFITS

- Improved performance, stability and excellent high-impact resistance.
- Added safety, exceptional field of vision and convenience.
- Protection against sun, glare, and condensation.
- Exceptional ventilation for improved temperature control.
- Anti-bacterial, anti-fungal and moisture wicking for added comfort and hygiene.
- Convenience and comfort.

DOT



NEW
CAN-AM N100-5 MODULAR HELMET
448571 · XS, S, M, L, XL, 2XL, 3XL · White (01), Black (90)
\$409.99



STYLISH,
SPORTY
DESIGN.

FULL FACE HELMET

CAN-AM N87 FULL FACE HELMET

FEATURES

- Ultra-wide scratch-resistant visor with silicone-sealed profile Pinlock fog-resistant inner visor.
- Multi-adjustable anti-fog scratch-resistant VPS sunshield with UV400 protection.
- Exclusive AirBooster technology drives innovative ventilation system.
- Complete with chin guard air intake and rear extractors.
- Patented Microlock double lever retention system.
- Fully removable and washable double-density micro-perforated Clima-Comfort interior padding.
- Washable cheek pads.
- Fully N-Com System-ready.
- ECE version not available in North America.
- Shell: Lexan⁺ Polycarbonate

BENEFITS

- Delivers a superior field-of-vision for a safer ride.
- Engineered for superior anti glare, anti-fog capability.
- Designed to prevent accidental visor opening, closing, and foreign matter infiltration.
- Ultra-comfortable, and equipped with intelligent ventilation for superior temperature and humidity control.
- Stylish, sporty design.
- Eyewear compatible.

DOT ECE22.05



NEW
CAN-AM N87 FULL FACE HELMET
448592 · DOT · XS, S, M, L, XL, 2XL · Black (90), Matte Black (93)
448593 · ECE · 2XS, XS, S, M, L, XL, 2XL · Matte Black (93)
\$259.99

COMMUNICATION SYSTEMS

ENHANCE THE EXPERIENCE.

Get your message across around every curve, into any headwind, and in the noisiest traffic with our in-helmet communication systems. A lot happens when convenience, comfort and cutting-edge technology come together to create effortless communication. Whether you're out for an hour or in it for the long haul our systems ride with you, letting you stay in touch in almost any driving condition.

SENA 30K BLUETOOTH COMMUNICATION SYSTEM

- FEATURES**
- Innovative Bluetooth® 4.1 communication system with advanced adaptive Mesh-Intercom Technology.
 - 13-hour Bluetooth intercom / 8-hour Mesh-Intercom talk time with 1.5-hour. charge.
 - Open terrain range: Bluetooth 1 mi (1.6 km), Mesh 1.2 mi (2 km).
 - Separate headset (HSP) and hands-free profiles (HFP).
 - Advanced Noise Control®.
 - Integrated FM Radio with 10 stations preset and auto-scan tuning.



NEW
SENA 30K BLUETOOTH COMMUNICATION SYSTEM
Single pack · 4486100090
Dual pack · 4486110090
\$329.99 **\$579.99**



NOLAN B901-R BLUETOOTH COMMUNICATION SYSTEM

- FEATURES**
- 700 m range rider-to-passenger or vehicle-to-vehicle communication.
 - Conference-call ability.
 - Full cross-platform Bluetooth compatibility.
 - Voice-activated.
 - Bluetooth connectivity iOS® and Android® smartphones and A2DP MP3 player with auto-mute during incoming calls.
 - Integrated FM Radio with 6 station presets and auto-search & tune.
 - Satellite navigator integration via Bluetooth (compatible models only).
 - Windows® and OS X® compatibility.



NEW
NOLAN B901-R BLUETOOTH COMMUNICATION SYSTEM
Single pack · 4485900090
\$319.99



USE THIS CHART TO FIND THE COMMUNICATION SYSTEM THAT FITS YOUR NEEDS.

FEATURES	SENA 30K BLUETOOTH	NOLAN B901-R BLUETOOTH
Bluetooth	4.1	4.1
Universal Intercom	✓	✓
Intercom Connections*	Private mode - 16 riders within 1.2 mi (2 km) range Mesh Intercom - Limitless amount of 30K users within 1 mi (1.6 km) range	"Rider/Passenger" intercom via Bluetooth Bike-to-bike intercom - 0.4 mi (0.7 km) range
Cell Phone and/or GPS and/or MP3 Player Compatible	✓	✓
Advance Noise Control	✓	✓
FM Radio	✓	✓
Voice Command	✓	✓
Smartphone application	✓ (iPhone and Android)	✓ (iPhone and Android)
Helmet Integration	External (Universal Mounting)	Fully Integrated (Nolan's Helmets: N40-5, N87, N100-5)

*Can be connected via Bluetooth to intercom systems of other brands.



GLOVES

ALL WEATHER

LEATHER GLOVES

- Fine grade leather.
- Fit perfectly to offer warmth and protection for mild weather.
- Suede forefinger to wipe visor.
- Padded palm for comfort during longer rides.

Shell: Cow Leather

Men's Blake

446290 · M, L, XL, 2XL, 3XL · Black (90)

\$49.99

NEW

Ladies' Veronica

446313 · S, M, L, XL, 2XL · Black (90)

\$59.99



Men's

Ladies'

HOT WEATHER

MECHANIC GLOVES

- Multizone padded palm reduces hand fatigue from shock and vibration.
- Pre-curved design for improved fit.
- Double Clarino® layer at palm and thumb for extra durability and increased comfort.

Shell: Nylon, Polyester,
Polyurethane, Spandex

446267 · S, M, L, XL, 2XL · Black (90)

\$39.99



PROTECTIVE GUARDS



RETRO REFLECTIVE ARMBAND

- To wear on bicep over a jacket to be more visible.
- Velcro attachment.
- Meets France retro-reflective equipment legislation.

Polyester, Spandex

453674 · One size · Hi-Vis Yellow (26)

\$9.99



REMOVABLE BACK PROTECTORS

- High shock absorbing performance.
- Maximal comfort.
- Can be inserted in most Can-Am Spyder jackets inside pouches for extra protection.

Viscoelastic Polyurethane Foam

447321 · S, L, XL · Black (90)

\$24.99



REMOVABLE ELBOW, KNEE OR SHOULDER PROTECTORS

- Same protector for elbow, knee or shoulder.
- Can be inserted in most Can-Am Spyder riding gear inside pouches for extra protection.
- Sold in pairs.

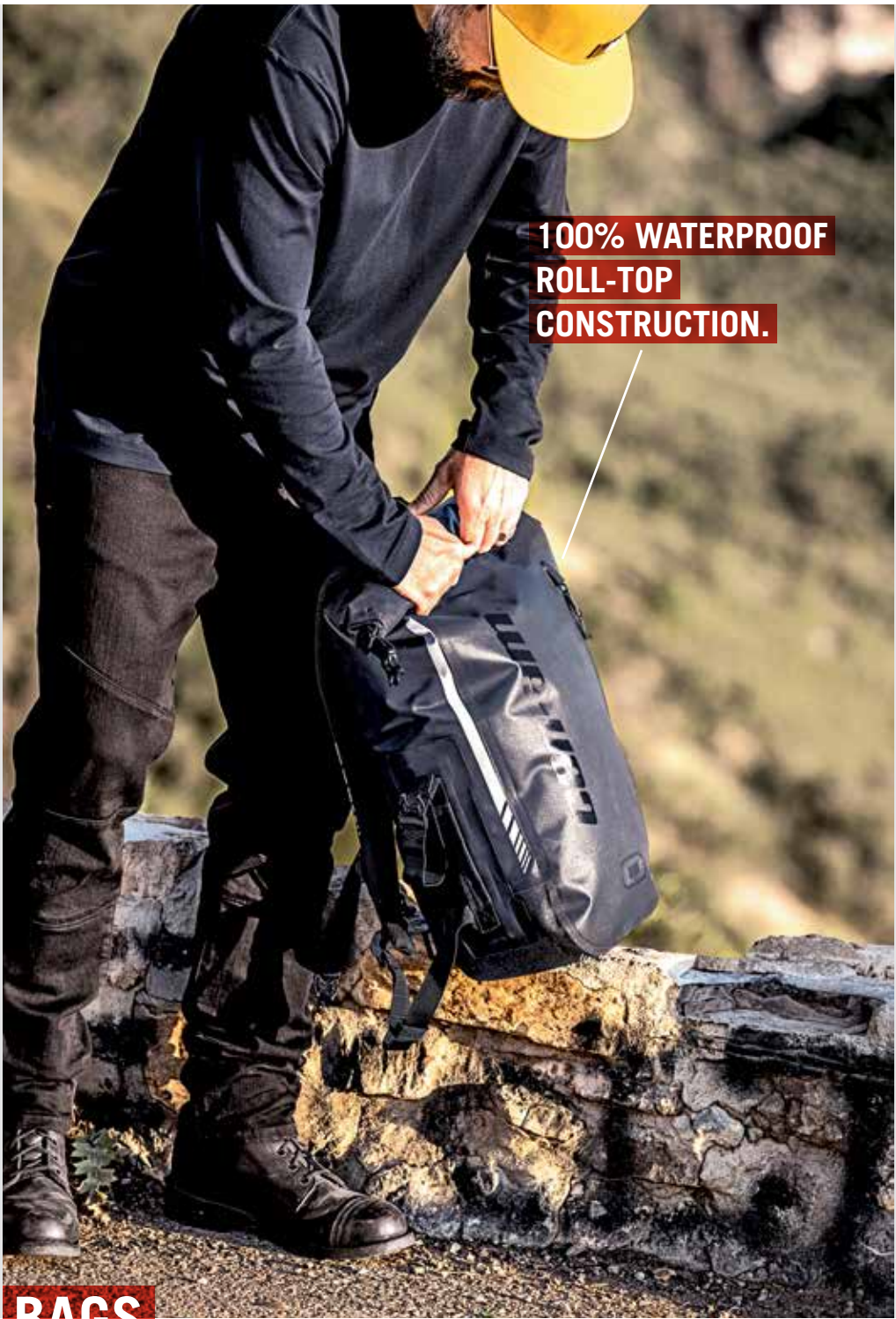
Viscoelastic Polyurethane Foam.

Men's
447313 · One size · Black (90)

\$24.99

Ladies'
447322 · One size · Black (90)

\$24.99



BAGS

CAN-AM SLAYER GEAR BAG BY OGIO

- Large main compartment with easy access to all gear.
- Large separated boot pocket.
- Zippered accessory pocket.
- Easy grab handles for transport.
- Detachable shoulder strap.
- Heavy-duty reinforced base.

4692940090 · Black

\$99.99



CAN-AM URBAN BACKPACK BY OGIO

- Airport security friendly protective laptop compartment.
- Padded iPad/tablet/e-reader pocket.
- Dual side water bottle/accessory holders.
- Fully adjustable ergonomic shoulder straps.
- Front pocket with two padded accessory compartments and slip pocket.

4692930090 · Black

\$84.99



NEW

CAN-AM ALL ELEMENT DRY BACKPACK BY OGIO

- 100% waterproof roll-top construction.
- Generous 7 US gallons (26-liter) capacity.
- Back panel allows airflow to keep rider cool.
- Strap-containment system keeps straps secured at high speeds.
- Adjustable sternum strap and dual-density shoulder straps maximize comfort.
- High-visibility 360° reflective screen print and removable high-visibility liner.
- Complete with zippered easy-access front stash pocket and dual-pocket organization panel and laptop/tablet sleeves.

4693020090 · Black

\$139.99

SPORTSWEAR

You're unique. You've always known the journey was the destination, and Can-Am On-Road the only way to get there. Confidence, determination, and a sense of adventure got you this far, so wear your heart on your sleeve, and enjoy the ride in style.



TECHNICAL LONG SLEEVE TEE 454146



RIDE TEE 454147



JESS LONG SLEEVE TEE 454144



ORIGINAL TEE 454068



MEN'S
SPORTSWEAR

TEES

NEW

CALIBER POLO

· Moisture wicking polyester to keep you cool and dry.
88% Polyester,
12% Spandex
454141
S, M, L, XL, 2XL, 3XL
Black (90),
Heather Grey (27)

\$49.99



NEW

TECHNICAL LONG
SLEEVE TEE

· Stretchable technical fabric provides easy movement.
92% Polyester,
8% Spandex
454145
S, M, L, XL,
2XL, 3XL
Black (90)

\$59.99



Back

NEW

ORIGINAL TEE

100% Cotton
454068
XS, S, M, L, XL, 2XL, 3XL
Black (90), White (01)

\$22.99



NEW

LONG SLEEVE
ORIGINAL TEE

100% Cotton
454085
S, M, L, XL, 2XL, 3XL -
Black (90), White (01)
\$34.99



CAPS



NEW

CRUISE CAP

· Wear-resistant, comfortable and breathable cotton canvas.
· Rear plastic size-adjustment strap.
100% Cotton
447542 - One size - Black (90), Whiskey (28)

\$24.99



NEW

CALIBER CAP

· Durable, comfortable and breathable cotton twill.
· Rear plastic size-adjustment strap.
100% Cotton
447541 - One size - Grey (09), Black (90)

\$24.99



NEW

CLASSIC CAP

· Adjustable back strap.
100% Cotton
448522 - One size - Grey (09),
Red (30), Blue (80), Navy (89),
Black (90)

\$19.99



LADIES'
SPORTSWEAR

TEES

NEW

RIDE TEE

· Comfortable, breathable, and stretchable cotton jersey/spandex blend.
95% Cotton jersey, 5% Spandex
454147
S, M, L, XL, 2XL, 3XL
Light Blue (81), Navy (89)
\$24.99



NEW

ORIGINAL TEE

95% Cotton, 5% Spandex
454071
XS, S, M, L, XL, 2XL
Black (90), White (01)
\$22.99



NEW

TECHNICAL
LONG SLEEVE TEE

· Stretchable technical fabric provides easy movement.
92% Polyester, 8% Spandex
454146
S, M, L, XL, 2XL, 3XL
Black (90)
\$59.99



Back

NEW

JESS LONG SLEEVE
TEE

· Comfortable and breathable cotton jersey fabric.
95% Cotton jersey, 5% Spandex
454144
XS, S, M, L, XL, 2XL, 3XL
Black (90), Purple (40)
\$34.99



CAP

NEW

JANE CAP

· Durable, comfortable and breathable cotton twill.
· Rear plastic size-adjustment strap.
100% Cotton
447543 - One size - Charcoal Grey (07), Black (90)
\$24.99



IF WE SELL IT,
WE STAND
BY IT.

BRP LIMITED WARRANTY*
FOR NEW RIDING PARTS,
ACCESSORIES AND RIDING GEAR.

1 YEAR LIMITED WARRANTY**

GENUINE BRP PARTS AND ACCESSORIES
installed by you or your authorized BRP dealer

AFTERMARKET PRODUCTS SOLD BY BRP

RIDING GEAR

4 YEAR LIMITED WARRANTY**

HELMETS



GET ALL THE DETAILS FROM YOUR CAN-AM SPYDER DEALER

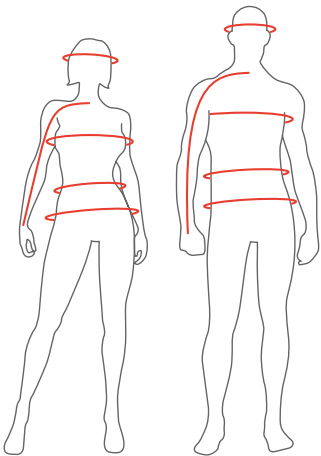
* Purchased at an authorized BRP dealership / distributor or on a BRP-authorized online store. Other exclusions may apply, see complete limited warranty or contact your Can-Am Spyder authorized dealer.

** Unless otherwise stipulated or required by law.

This limited warranty does not apply to factory installed accessories. This limited warranty does not apply on Evinrude parts and accessories.

HOW TO MEASURE

For best results, have someone else take measurements. Measure body in underwear. Tape must be snug but not tight. If measurements fall between two sizes, order the larger size.



HEAD

Around your head, from the center of the forehead, above the ears and over the natural bump at the back of the head.

CHEST/BUST

Measure under your arms, around the fullest part of your chest.

WAIST

Measure around your natural waistline, keeping one finger between the tape and body.

HIPS

Across the fullest part of the seat.

ARM LENGTH

Let hands down the side in a slightly bent position. Measure from center back neck bone, along shoulder point and elbow, to bottom of wrist bone.

GLOVES

Measure palm width.

WHAT CODE REPRESENTS YOUR SIZE?

- 1. Find your size.
- 2. The corresponding code is THE CODE you use to complete the part number on your order. Example: 440227__90 Size: M = Code 06 Therefore 440227 06 90

MEN'S REGULAR · 5'8" - 6'0"

CALIBER, CRUISE, RUSSELL MESH JACKETS & SPORTSWEAR							
	XS	S	M	L	XL	2XL	3XL
Chest (in)	33-35	35-37	37-40	40-44	44-48	48-52	52-56
Waist (in)	27-29	29-31	31-34	34-38	38-42	42-46	46-50
Hips (in)	33-35	35-37	37-40	40-44	44-48	48-52	52-56
Arm length (in)	30	31	32	33	34	35	35

MEN'S PLUS SIZE · 5'8" - 6'0"

VOYAGER & SHAUN PLUS MESH JACKETS						
	L PLUS	XL PLUS	2XL PLUS	3XL PLUS	4XL PLUS	5XL PLUS
Chest (in)	43-47	47-51	51-55	55-59	59-62	62-66
Waist (in)	40-44	44-48	48-52	52-56	56-59	59-68
Hips (in)	43½-47½	47½-51½	51½-55½	55½-59½	59½-62½	62½-71½
Arm length (in)	33	34	35	35	36	36

LADIES' REGULAR · 5'4" - 5'8"

CALIBER, CRUISE, KATE MESH JACKETS & SPORTSWEAR							
	XS	S	M	L	XL	2XL	3XL
Chest (in)	32-34	34-36	36-39	39-42	42-45	45-49	49-53
Waist (in)	24-26	26-28	28-30	30-34	34-37	37-41	41-45
Hips (in)	34-36	36-38	38-40	40-44	44-47	47-51	51-55
Arm length (in)	31	31	31½	32	32½	33	34

LADIES' PLUS SIZE · 5'4" - 5'8"

VOYAGER & EMMA PLUS MESH JACKETS						
	M PLUS	L PLUS	XL PLUS	2XL PLUS	3XL PLUS	4XL PLUS
Chest (in)	39-42	42-45	45-48	48-52	52-56	56-60
Waist (in)	32-34	34-38	38-41	41-45	45-49	49-53
Hips (in)	41-43	43-47	47-50	50-54	54-58	58-62
Arm length (in)	31½	32	32½	33	34	34

REMOVABLE BACK PROTECTORS

CALIBER, VOYAGER & CRUISE JACKETS		
Men's Jacket Sizes		Ladies' Jacket Sizes
S	S and M	XS to L
L	L to 2XL	XL to 5XL
XL	3XL to 5XL	-

MEN'S PANTS

	30	32	34	36	38	40	42	44	46	48
Waist (in)	30-32	32-34	34-36	36-38	38-40	40-42	42-44	44-46	46-48	48-50
Hips (in)	36-38	38-40	40-42	42-44	44-46	46-48	48-50	50-52	52-54	54-56
Inseam (in)	31 1/2	32	32	32	32	32	32	32	32 1/2	32 1/2

LADIES' PANTS

	6	8	10	12	14	16	18	20	22
Waist (in)	28-29	29-30	30-31	31-33	33-35	35-37	37-40	40-42	42-44
Hips (in)	38-39	39-40	40-41	41-43	43-45	45-47	47-50	50-52	52-54
Inseam (in)	30	30	30	30	30	30	30 1/2	30 1/2	30 1/2

MEN'S GLOVES

	XS	S	M	L	XL	2XL	3XL
Inches	3	3¼	3½	4	4½	5	5½

LADIES' GLOVES

	XS	S	M	L	XL	2XL
Inches	2½	2¾	3	3½	4	4½

HELMETS

	XS	S	M	L	XL	2XL	3XL
Head circumference (in)	20½-21¼	21½-22	22¾-22¾	23½-23½	24-24¾	24¾-25½	25½-25½

CAN-AM SPYDER RIDING BOOTS

SIZE US	7	8	9	10	11	12	13
SIZE EU	40	41	42	43	44	45	46
Foot length (in)	10.0	10.2	10.5	10.7	11.0	11.3	11.5
Foot length (cm)	25.3	26.0	26.7	27.3	28.0	28.7	29.3

Code	00	02	04	72	06	09	73	12	14	16	25	27	28	29	30	31	32
Size	OS	XS	S	S/M	M	L	L/XL	XL	2XL	3XL	6	7	8	9	10	11	12
Code	33	34	35	78	92	93	37	38	39	40	41	42	43	44	45	46	
Size	13	14	16	18	20	22	30	32	34	36	38	40	42	44	46	48	
Code		62		63		64		65		66		67		68			
Size		M PLUS		L PLUS		XL PLUS		2XL PLUS		3XL PLUS		4XL PLUS		5XL PLUS			

GENUINE CAN-AM PARTS

REMEMBER WHAT MADE YOU FALL FOR A CAN-AM SPYDER?
Precisely engineered. Rigorously tested. Factory approved. The Ultimate Can-Am On-Road experience continues with the Genuine Can-Am parts.

GENUINE PARTS THAT SET THE STANDARD

1 YEAR WARRANTY ON ALL GENUINE CAN-AM PARTS

Regular maintenance ensures your Can-Am Spyder performance stays at its peak.



TIRES

706202317 Front 165/55R 15
706201411 Front 165/65R 14
705501464 Rear 225/50R 15

BRAKE PAD KITS

Spyder 2013 and up
219800237 Front
219800239 Rear

AIR FILTERS

All Spyder models with 1330 engine
707800483

XPS ENGINE OILS

779247 SM5
779248 SE5
779249 1330 engine

XPS BRAKES & PARTS CLEANER

219701705

XPS EXTENDED LIFE PRE-MIXED COOLANT

779150

XPS FUEL STABILIZER

779171

XPS BRAKE FLUID

779151

DRIVE BELTS

Spyder RT 2014 and up
705501304
All Spyder F3 models
705502157

YUASA® BATTERIES

410922962 21 Amps (YTX24HL)

NGK® SPARK PLUGS

415129670 MR7BI-8
219800231 KR8Bi
278002297 DCP-R9E
707000246 DCP-R8E



AIR FILTERS

- Prevent airborne contaminants from reaching your engine.
- Protect internal components against premature wear.

Spyder RS 2008-2012
707800188
\$34.99

Spyder RS 2013 and up, Spyder RT with 998 cc engine 2010-2013, all Spyder ST models
707800306
\$34.99

All Spyder models with 1330 engine
707800483
\$34.99



BRAKE PAD KITS

- Brembo® brake systems are considered to be the benchmark for quality and innovation, delivering the ultimate in performance, comfort, quiet, and durability.

Spyder 2013 and up
219800237 · Front
219800239 · Rear
\$59.99

- Provide excellent performance, quiet, and durability in all road conditions.

Spyder 2012 and prior
219800164 · Front
\$119.99
219800165 · Rear
\$59.99



TIRES

- Designed to work in tandem with the Can-Am Spyder innovative Vehicle Stability System to provide an ultra-stable, confident ride.

706202317 · Front · 165/55R 15
706201411 · Front · 165/65R 14
\$94.99

705501464 · Rear · 225/50R 15
\$189.99

YUASA® BATTERIES

- Absorbed Glass Mat (AGM) technology offers durability, electrical reliability, near maintenance-free performance, making it ideal for the Can-Am Spyder.
- Spill-proof design with the ability to hold its charge three times longer than conventional lead-acid batteries in stand-by mode.

410922962 · 21 Amps (YTX24HL)
\$149.99



NGK® SPARK PLUGS

- NGK spark plugs are recommended by BRP and ensure your Can-Am Spyder's ROTAX engine runs smoothly and delivers optimum power at all times.
- Consistent, reliable performance make it an OEM favorite.

415129670 · MR7BI-8
\$15.99

278002297 · DCP-R9E
\$3.99

219800231 · KR8Bi
\$15.99

707000246 · DCP-R8E
\$3.99



DRIVE BELTS

- High-tensile strength carbon cord and HNBR rubber construction delivers impressive durability, superior flexibility and reduced noise, while resisting abrasion.
- Tooth-side fabric composed of special low-friction fiber.

Spyder RT 2014 and up
705501304

All Spyder F3 models
705502157
\$309.99



XPS ENGINE OILS



4T 5W40 SYNTHETIC BLEND OIL

- Powersport formula with premium anti-wear and anti-corrosion additives.
 - Wet clutch, turbo and supercharged compatible.
- 779133 · 1 quart / 946 ml
779290 · Europe
- 779134 · 1 US gallon / 3.785 L
779291 · Europe



4T 5W-40 SYNTHETIC BLEND OIL CHANGE KIT

- Ultra-convenient “all-in-one” oil change kit saves time and money.
 - Includes XPS Synthetic or Synthetic Blend Oil, oil filter, o-rings and washer.
- | | | |
|------------|------------|--------------------|
| SM5 | SE5 | 1330 ENGINE |
| 779247 | 779248 | 779249 |

XPS MAINTENANCE PRODUCTS

DOT 4 BRAKE FLUID

- Meets or exceeds all DOT3 and DOT4 brake fluid requirements.
 - High-temperature formula resists fade, and also conditions seals and o-rings in braking system.
- 779151 · 12 fl. oz. / 355 ml
779207 · Europe



RACING BRAKE FLUID RS600

- Exceeds DOT4 brake fluid requirements for extreme conditions.
 - Extreme, 579-degree boiling point temperature is ideal for high-demand conditions to combat brake fade.
- 779152 · 12 fl. oz. / 355 ml
779209 · Europe



EXTENDED LIFE PRE-MIXED COOLANT

- Antifreeze/Coolant contains the correct dilution and the necessary additives to prevent corrosion and inhibit cavitation in BRP cooling systems.
 - Long-life, 5-year formula specially formulated for BRP vehicles.
 - Superior heat transfer.
 - Ideal replacement for vehicles that normally use a 2-year antifreeze/coolant (green).
 - 5 years (orange).
- 779150 · 1 quart / 946 ml
779223 · Europe



FUEL TREATMENT CARBON FREE

- Combination of a fuel treatment and a fuel system cleaner that can be used periodically to restore lost starting or throttle performance, as well as maintain fuel system integrity and keep internal engine parts clean.
 - It treats fuel for storage and addresses the moisture problems inherent in today's Ethanol-blended fuels, keeping ferrous and soft metal parts clean and free of corrosion.
 - Uses patented, state-of-the-art additives.
 - Cleans valves, sticky rings and combustion chamber.
- 779169 · 12 fl. oz. / 355 ml
779220 · Europe



FUEL STABILIZER

- Ethanol-compatible and will stabilize fuel in your tank to keep it from breaking down and causing hard starting, throttle hesitation and poor run quality.
 - Ethanol attracts moisture, and this product contains powerful anti-corrosion additives to protect fuel system components.
 - Prevents problems associated with E10 fuels.
- 779171 · 8 fl. oz. / 236 ml
779183 · Europe



SYNTHETIC GREASE SUSPENSION

- Designed to work specifically with the components found in Can-Am vehicles suspensions.
 - It is highly stable and offers optimal lubrication at both extreme cold and high temperatures while protecting suspension components from dirt and moisture, as well as corrosion under extreme washout conditions.
- 779163 · 14 oz. / 400 g
779226 · Europe



ANTI-CORROSIVE LUBRICANT

- Multipurpose lubricant that can also be used to prevent rust, corrosion and moisture intrusion.
 - It contains extreme pressure additives that work as an all-around lubricant for just about anywhere lubrication is needed.
- 779168 · 12 oz. / 340 g
779168 · Europe



XPS CLEANERS



BRAKES & PARTS CLEANER

- A concentrated blend of solvents with a powerful blasting spray that effectively removes grease, grime, brake fluid and other contaminants from brake components and metal parts without the need for disassembly.
 - Evaporates instantly and completely, leaving no residue to hinder performance.
 - Contains no ozone depleters.
- 219701705 · 14 oz. / 397 g



CAN-AM SPYDER WASH

- A biodegradable non-toxic cleaner that removes dirt and road grime better than any other cleaner.
 - Simply spray on and rinse off.
 - When used as directed, XPS Can-Am Spyder Wash is safe for all roadster finishes.
- 219701703 · 32 oz. / 946 ml



METAL POLISH

- Cleans, polishes and protects most metal surfaces, such as chrome, stainless steel, nickel, aluminum, brass, bronze, copper, platinum, magnesium and more.
 - Not recommended for use on anodized or clear-coated finishes.
- 219701707 · 8 oz. / 226 ml



SPRAY CLEANER & POLISH

- Removes dirt, grease, road grime and water marks easily and quickly.
 - Non petroleum based formula will not harm plastic finishes.
- 219702844 · 12 oz. / 340 g



MICROFIBER TOWELS

- The latest in high-quality detailing towels.
 - Made up of extremely fine fibers, their soft surfaces have been perfected for drying and polishing painted, gel coated and hard shiny surfaces.
 - They are so absorbent they hold up to seven times their weight in water.
 - Machine washable means they can be used over and over again.
 - Pack of 2.
- 219701759





Rotax 1330 ACE™ engine

WHY XPS OIL IS THE PERFECT FIT FOR YOUR ROTAX ENGINE?

Whether you purchased it as a necessity for transportation, or the pure exhilaration of performance, your Can-Am On-Road vehicle is an investment – get the most out of it. XPS lubricants are the only lubricants specifically engineered to do that with your Rotax-powered Can-Am vehicles.

UNMATCHED RELIABILITY

Get the most out of every mile on every ride.

ULTIMATE PERFORMANCE

Engineered to match the advanced performance of Rotax engines.

MADE FOR THIS

Developed with Rotax engines to deliver the best performance and lubrication in all conditions.



VISIT THE [CANAMSPYDER.COM](https://canamspyder.com) PARTS & MAINTENANCE SECTION TO SEE THE FULL LINE OF XPS LUBRICANTS.

EXPLORE AN ENTIRE WORLD OF ADVENTURE WITH ALL OF OUR BRP PRODUCTS. [BRP.COM](https://brp.com)



ski-doo LYNX SEAWOO EVINRUDE ROTAX can-am