

OUTLANDER RENEGADE

**ACCESSORIES
RIDING GEAR
GENUINE PARTS**



2018

can-am





***ENHANCE & EXTEND YOUR OFF-ROAD EXPERIENCE
WITH ACCESSORIES BUILT BY CAN-AM FOR CAN-AM.***



*Wherever you're going,
and whatever you're doing,
Can-Am Off-Road accessories
can help get you there
and get it done – faster
and more efficiently.
High-quality, innovative
accessories that work right,
fit right and feel right because
they're developed or approved
by Can-Am for Can-Am.*

QUALITY FIRST.

The very best off-road accessories have to begin somewhere. At Can-Am, it all starts with our unwavering commitment to innovation, quality and seamless integration. It goes into everything we do, and everything we make; that's why we excel. High-performance engineering drives our race for perfection, quality steers it, and the result is Can-Am off-road customization that meets the very highest of standards. Yours.

RUGGED RELIABILITY.

Countless years of expertise and experience have allowed Can-Am to create off-road accessories without equal. Because they're created in parallel with the vehicles they're designed for, they come with an extra measure of confidence. Our guarantee. Genuine Can-Am accessories installed by you or an authorized dealer are covered for an entire year. Rely on it!

STYLE & VISION.

You get far more out of your Can-Am off-road vehicle when you customize it with genuine top-quality Can-Am accessories. But we've also gone the extra mile when it comes to design – so choosing Can-Am accessories means you always enjoy the very latest look – one that matches both your ride and your style.

ACCESSORIES RIDING GEAR GENUINE PARTS

ATV ACCESSORIES

- 8 COMPATIBILITY GUIDE
- 10 CARGO & STORAGE
- 17 WINDSHIELDS
- 19 HANDLEBARS & MIRRORS
- 20 SEAT KITS
- 21 RACKS & HOLDERS
- 24 SKID PLATES
- 28 BUMPERS & GUARDS
- 31 LIGHTS & ELECTRICAL



- 34 WINCHES
- 37 HITCHES
- 38 PERFORMANCE
- 42 COVERS, DECALS & ADD-ONS
- 43 APACHE TRACK SYSTEMS
- 46 PLOWS
- 47 ALPINE FLEX PLOWS
- 49 ALPINE SUPER-DUTY STEEL PLOWS
- 52 OUTLANDER 6X6 ACCESSORIES



TIRES & RIMS

- 55 TIRES
- 56 RIMS



CAN-AMOFFROAD.COM



Shop the online store for genuine parts, accessories and riding gear.



Check out our videos to learn more about our new innovative riding gear and accessories.



Explore our interactive online catalog. Instantly explore products, videos, large format images and share with friends!



Learn about and purchase XPS oils and lubricants.

© 2017 Bombardier Recreational Products Inc. (BRP). All rights reserved. ®, ™ and the BRP logo are trademarks of BRP or its affiliates. CARLISLE is a trademark of Carlisle Companies. CHAMUDE and HIPORA are registered trademarks of Kolon Industries, Inc. CLARINO is a trademark of Kuraray Co. Ltd. COOLMAX and THERMOLITE are registered trademarks of INVISTA for durable fabrics. DRIRERELEASE is a registered trademark of Optimer Inc. FOX is a registered trademark of Fox Racing Canada. GARMIN and MONTANA are registered trademarks of Garmin Ltd. iPod is a registered trademark of Apple Inc. KOLPIN, GUN BOOT and IMPACT are registered trademarks of Kolpin Powersports Inc. KYB is a registered trademark of Kayaba. MicroSD is a registered trademark of SD Card Association. Mud Lite XTR and SS312 are trademarks of ITP Tires. NEXT G-1 VISTA is a trademark of Next Camo, LLC. NGK is a registered trademark of NGK Spark Plugs, Ltd. PRIMALOFT GOLD and PRIMALOFT BLACK are registered trademarks of Albany International Corp. SUPERWINCH and S SUPERWINCH (design) are registered trademarks of Superwinch LLC. TEFLON, TEFLON HT and KEVLAR are trademarks of E.I. DuPont de Nemours & Co. TWINAIR is a trademark of Twin Air USA. UNI is a trademark of UNIFILTER Inc. VELCRO is a registered trademark of Velcro Industries. WARN is a trademark of Warn Industries Inc. YUASA is a registered trademark of YUASA Batteries Inc. ZILLA and BIGHORN 2.0 are trademarks of Maxxis. SCOTT is a trademark of Scott Sports SA. The following trademarks are the property of their respective owners: BLUETOOTH, CREE, DURO, DWT, HELLA, ITP, KENDA, MOSSY OAK, RAM, SUR LAST, VISION, XPS and YOSHIMURA. DRAGONFIRE is a trademark of KRANSCO. Baja Designs is a registered trademark of Baja Designs Inc. S3 POWERSPORTS is a trademark of S3 Power Sports LLC. Some models depicted herein may include optional equipment. Prices, if shown, are based on Manufacturer Suggested Retail Prices. Dealers may sell for a different price. For Canada & US, taxes are not included. Depending on location, products are distributed by BRP US Inc., Bombardier Recreational Products Inc., BRP European Distribution SA, BRP Finland Oy., BRP Australia Pty Ltd. or BRP Brasil Motorsports LTDA. BRP reserves the right, at any time, to discontinue or change specifications, prices, designs, features, equipment without incurring obligation. Printed in Canada.

OUTLANDER RENEGADE

SPORTSWEAR & RIDING GEAR

58 KAPPA SPORTSWEAR
67 CAN-AM SPORTSWEAR
69 JERSEYS
70 HELMETS
72 GOGGLES

72 GLOVES
72 JUNIOR
72 BAGS
73 SIZING CHART

PARTS & MAINTENANCE

75 GENUINE PARTS
76 OILS & MAINTENANCE



Visit instructions.brp.com
for BRP accessories instruction sheets.
You will find complete installation
instructions, part number lists and
service kits for repair and maintenance.

BRP LIMITED WARRANTY*

FOR NEW PARTS, ACCESSORIES AND RIDING GEAR.

1 YEAR LIMITED WARRANTY**

GENUINE BRP PARTS & ACCESSORIES

installed by you or your authorized BRP dealer

AFTERMARKET PRODUCTS SOLD THROUGH BRP¹

RIDING GEAR

4 YEARS LIMITED WARRANTY**

HELMETS

¹Use other than which the product is designed for will void the product lifetime warranty. *Applies only to BRP-made products or aftermarket products made by accredited BRP partners. Purchased at an authorized BRP dealership / distributor or on a BRP-authorized online store. Other exclusions may apply, see complete limited warranty or contact your Can-Am off-road authorized dealer. ²Includes only BRP-approved aftermarket products and products made by currently accredited BRP partners. **Unless otherwise stipulated or required by law. This limited warranty does not apply to factory installed accessories. This limited warranty does not apply on Evinrude parts and accessories. This limited warranty is effective as of March 1st, 2016.

OUTLANDER ACCESSORIES BUILT FOR





PUMP UP YOUR OUTLANDER

***ADD MUCH MORE MUSCLE, VERSATILITY, COMFORT, PROTECTION,
& RUGGED ABILITY WITH OUR SELECTED ACCESSORIES
BUILT FOR TAKING ON THE TOUGHEST JOBS.***

- | | | |
|----------|---|---------------------|
| 1 | <i>LinQ LOW PROFILE BASKET</i> | <i>P. 16</i> |
| 2 | <i>LinQ BASE</i> | <i>P. 15</i> |
| 3 | <i>LinQ HEAVY-DUTY BASKET</i> | <i>P. 16</i> |
| 4 | <i>XT FRONT BUMPER</i> | <i>P. 29</i> |
| 5 | <i>EXTREME FRONT BUMPER</i> | <i>P. 29</i> |
| 6 | <i>XT REAR BUMPER</i> | <i>P. 29</i> |
| 7 | <i>CAN-AM TERRA 35 WINCH BY SUPERWINCH[†]</i> | <i>P. 35</i> |

OUTLANDER ACCESSORIES BUILT FOR THE





PUMP UP YOUR OUTLANDER

**EQUIP YOURSELF WITH ACCESSORIES BUILT FOR THE TRAIL AHEAD
AND RIDE WITH MUCH MORE COMFORT,
AGILITY, VISIBILITY, STYLE, & CARGO CAPACITY.**

- | | | |
|----------|---------------------------------------|-------|
| 1 | DELUXE FAIRING | P. 17 |
| 2 | HIGH WINDSHIELD | P. 17 |
| 3 | LinQ 23 GAL (86 L) TRUNK BOX | P. 13 |
| 4 | LinQ 6" (15 CM) RACK EXTENSION | P. 21 |

ATV ACCESSORY COMPATIBILITY GUIDE

WE'VE MADE THINGS SUPER SIMPLE.

Determine your **MODEL YEAR**, find your **MODEL** and **ENGINE CONFIGURATION**, and that'll reveal your **PLATFORM CODE**.

This **PLATFORM CODE** will let you know at a glance if the accessory is compatible with your vehicle.

EXAMPLE



FULL WRAP ALUMINUM MOUNTING KIT

- Lightweight black die cast aluminum construction.
- Includes complete hardware.
- Handlebar wind deflectors sold separately.



Fits: **G2, G2L, G2S**

715001378

\$84⁹⁹

MODEL YEAR	MODEL	ENGINE CONFIGURATION	PLATFORM CODE
2013	Outlander	400	G1
	Outlander	500, 650, 800, 1000	G2
	Outlander MAX	400	G1
	Outlander MAX	500, 650, 800, 1000	G2
	Renegade	500, 800, 1000	G2S



2014	Outlander	400	G1
	Outlander	500, 650, 800, 1000	G2
	Outlander MAX	400	G1
	Outlander MAX	500, 650, 800, 1000	G2
	Renegade	500, 800, 1000	G2S



MODEL YEAR	MODEL	ENGINE CONFIGURATION	PLATFORM CODE
2015	Outlander L	450,500	G2L
	Outlander	500, 650, 800, 1000	G2
	Outlander L MAX	450, 500	G2L
	Outlander MAX	500, 650, 800, 1000	G2
	6x6	650, 1000	G2
	Renegade	500, 800, 1000	G2S



2016	Outlander L	450, 570	G2L
	Outlander	570, 650, 850, 1000	G2
	Outlander L MAX	450, 570	G2L
	Outlander MAX	570, 650, 850, 1000	G2
	6x6	650, 1000	G2
	Renegade	570, 850, 1000	G2S



2017	Outlander	450, 570	G2L
	Outlander	650, 850, 1000	G2
	Outlander MAX	450, 570	G2L
	Outlander MAX	650, 850, 1000	G2
	6x6	650, 1000	G2
	Renegade	570, 850, 1000	G2S



2018	Outlander	450, 570	G2L
	Outlander	650, 850, 1000	G2
	Outlander MAX	450, 570	G2L
	Outlander MAX	650, 850, 1000	G2
	6x6	650, 1000	G2
	Renegade	570, 850, 1000	G2S



CARGO BOX O P T I O N S

**RUGGED LinQ CARGO BOXES INSTALL
& REMOVE IN SECONDS!**

**RELIABLE & DURABLE, THEY'RE PERFECT
FOR WORK & PLAY.**



LinQ SYSTEM™ CARGO BOXES

THERE'S A STORAGE SOLUTION THAT FITS YOU.

**LinQ 8 GAL / 30L
COOLER BOX**
715002892 P.13



KEEP THINGS COOLER, LONGER.

**LinQ 11.5 GAL / 43L
AUDIO CARGO BOX**
715003018 P.14



**BRING YOUR
GEAR & YOUR
TUNES ALONG
FOR THE RIDE.**

DID YOU KNOW?

The **LinQ System** originated in 2009 alongside the development of the Can-Am ATV G2 platform during which the BRP designers began to focus on racks and cargo. Until LinQ, riders had relied on tangled nets of bungee cords to strap down cargo, a solution that was prone to frequent failure. Once again necessity became the mother of invention and over time the innovative, modular LinQ system has proven to be a game changer, setting new standards for practicality and durability. Because of its great success, BRP has developed the LinQ system for its range of Ski-Doo accessories.



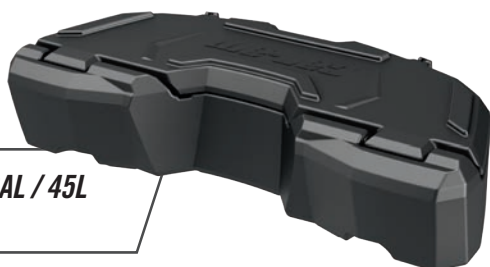
**BRING ALL YOU NEED
FOR THE RIDE, INCLUDING
YOUR FAVORITE TUNES!**

**LinQ 11.5 GAL (43L)
AUDIO CARGO BOX**

**CATCH THE
VIDEO**



CAN-AMOFFROAD.COM



LinQ 12 GAL / 45L
715003879 P.14



LinQ 23 GAL / 86L
715002474 P.13



LinQ 32 GAL / 124L
715001749 P.12
715001747 P.12

OUTLANDER RENEGADE

LinQ 32 GAL (124L) TRUNK BOXES

Seamless integration with vehicle

- Built from the design stage to specifically match your Can-Am vehicle.
- Totally cohesive design eliminates the need to modify your vehicle in any way*.
- Rear tail light.

Easy quick-attach installation

- Equipped with the LinQ System, the rear trunk box plugs in and out in seconds.
- Instantly transforms your vehicle to suit the need of the moment.

Unparalleled storage

- 32 Gal (124L) load capacity with contiguous unobstructed space to maximize storage room and access to the trunk's interior.

Built tough

- Made of injection-molded polyethylene, double walled in critical areas.

Dust & weather proof

- The fully sealed lid protects your belongings from dust, moisture and the elements.



LinQ
SYSTEM™

LinQ 32 GAL (124L) TRUNK BOX

- LinQ Retrofit Adaptor Plate (715001334) is required for G1 models.
- Trunk Box Panels available in many colors to match your vehicle (sold separately).
- LinQ Luggage Rack (715001734) is required for G2S.

Fits: G2 (except MAX models & 6x6), G2S

715001747

\$349⁹⁹

EUROPEAN VERSION (EC compliant)

- No rear tail light

715001748



LinQ
SYSTEM™

LinQ 32 GAL (124L) TRUNK BOX FOR OUTLANDER MAX

- Passenger comfort is ensured on active rides as well as longer recreational rides thanks to the ergonomically designed passenger padding comfort-fitted with a portion made of closed cell foam that won't absorb water.
- Very easy to embark even when driver is seated.
- Trunk Box Panels available in many colors to match your vehicle (sold separately).

Fits: G2 (MAX models only)

715001749

\$429⁹⁹

EUROPEAN VERSION (EC compliant)

- No rear tail light

715001750

**ERGONOMIC
PADDING MADE
OF CLOSED
CELL FOAM.**

LinQ 32 GAL (124L) TRUNK BOX PANELS

- Color panels to match the 32 Gal (124L) LinQ Trunk Box to your vehicle.

Fits: LinQ 32 Gal (124L) Trunk Boxes

- 715001391 • Black
- 715001392 • Yellow
- 715001395 • Viper Red
- 715002481 • White
- 715002480 • Light Grey

- 715002984 • Octane Blue
- 715002985 • Manta Green
- 715002986 • Can-Am Red



\$39⁹⁹

EUROPEAN VERSION (EC compliant)

- No rear tail light

- 715001397 • Black
- 715001398 • Yellow

- 715002482 • Light Grey
- 715002483 • White

CAMO DECALS FOR BLACK TRUNK BOX PANELS

- Camo pattern perfectly matches your camo vehicle.

Fits: Black LinQ 32 Gal (124L) Trunk Box Panel

715002975 • Mossy Oak Break-Up Country Camo

\$44⁹⁹

715001683 • Next G-1 Vista Camo

\$44⁹⁹



MOSSY OAK BREAK-UP COUNTRY



NEXT G-1 VISTA



LinQ REPLACEMENT PART

715001707

\$19⁹⁹

* WARNING: You should never accessorize your Can-Am off-road vehicle with accessories not approved by BRP because your vehicle may no longer meet certain safety and construction standards. This situation could increase the risk of severe injury or death and render your vehicle not legal for use.

NOT SURE IF AN ACCESSORY FITS YOUR MODEL? CHECK OUT OUR ACCESSORY COMPATIBILITY GUIDE ON P.8-9



OUTLANDER RENEGADE



PREMIUM INSULATION KEEPS THINGS COOLER, LONGER!

LinQ
SYSTEM

LinQ 8 GAL (30L) COOLER BOX

- Installs without vehicle modification.
- LinQ mounted for easy-on, easy-off installation.
- Rotomolded construction provides exceptional rigidity and durability.
- Premium-quality foam insulation for optimal ice retention.

Fits: G2, G2S
715002892

\$349⁹⁹

- Integrated, fully-removable compartment protects food.
- Weather-resistant, lockable.
- Convenient drain plug.
- LinQ Luggage Rack (715001734) is required for G2S.



LinQ
SYSTEM

LinQ 23 GAL (86L) TRUNK BOX

- Installs without vehicle modification.
- LinQ mounted for easy-on, easy-off installation.
- Lockable and weather-resistant.

Fits: G2 (except 6x6), G2L, G2S
715002474

\$279⁹⁹

- Holds cargo safely and securely while riding.
- Comfort pads for passenger.
- LinQ Base (715002350) is required for G2L.

CATCH THE
VIDEO

CAN-AMOFFROAD.COM

WE'VE PACKED AN ENTIRE
SOUND SYSTEM INTO OUR
LinQ AUDIO CARGO BOX!

OUTLANDER RENEGADE

LinQ
SYSTEM™

LinQ 11.5 GAL (43L) AUDIO CARGO BOX

- Delivers the best sound quality on the market to sweeten your ride courtesy of a built-in full range high efficiency amplifier.
- Mounts on/off easily to hold/carry cargo safely and securely.
- Automatic shut-off function protects your battery by turning the system off after 10 minutes of inactivity.
- Water-resistant speakers.
- The Bluetooth enabled receiver and 6.5" (16.5 cm) speakers are smartly concealed and integrated in the cover.
- Backlit control panel perfect for night riding.
- LinQ Base (715002350) is required for G2L.
- LinQ Luggage Rack (715001734) is required for G2S.

Fits: G2 (front only for 6x6 & MAX models 2013-2014), G2L, G2S

715003018

\$549⁹⁹LinQ
SYSTEM™

LinQ 12 GAL (45L) CARGO BOX

- Installs without vehicle modification.
- LinQ mounted for easy-on, easy-off installation.
- Holds cargo safely and securely while riding.
- LinQ Base (715002350) is required for G2L.
- LinQ Luggage Rack (715001734) is required for G2S.

Fits: G2 (front only for 6x6 & MAX models 2013-2014), G2L, G2S

715003879

\$209⁹⁹LinQ
SYSTEM™

LinQ DELUXE MODULAR BAG

- Installs without vehicle modification.
- LinQ mounted for easy-on, easy-off installation.
- Tool-less installation and removal.
- Versatile, rugged and spacious.
- Ideal for carrying anything you need in any conditions.
- Weatherproof, scratch-resistant, with molded rubber bottom.
- Central compartment can be used alone on the rack.
- Removable bin.
- LinQ Luggage Rack (715001734) is required for G2S.

Fits: G2 (front only for 6x6), G2S

12 Gal (44L) Bag

715001695

\$249⁹⁹

20 Gal (73L) Bag

715001694

\$289⁹⁹

OUTLANDER RENEGADE

SOFT STORAGE BAG

- 3-section bag.
- Transport gear in a weatherproof bag.
- 11.8 Gal (45L) capacity soft cargo bag designed with vehicle's rear or front rack and rack extensions in mind to maximize potential storage.
- LinQ Luggage Rack (715001734) is required for G2S.

Fits: G2, G2L, G2S

715003759 • Black

\$134⁹⁹

715001935

Mossy Oak Break-Up Country Camo

\$169⁹⁹



PROTECTS YOUR GEAR. ORGANIZES YOUR STORAGE & MAXIMIZES VERSATILITY.



STORAGE 2.6 GAL (10L) BAG

- Roll-top dry bag for fully protecting your cargo from the elements.
- Fits in rear compartment of your vehicle.

Fits all

269502121

\$29⁹⁹



LinQ
SYSTEM™

LinQ STORAGE BOX 2 GAL (7.5L)

- Features easy quick-attach LinQ installation on Outlander front and rear racks.
- Also installable behind the driver seat on Outlander MAX.
- Fully sealed box provides additional storage for essential and valuable items.
- LinQ Luggage Rack (715001734) is required for G2S.

Fits: G2, G2S

708200255

\$69⁹⁹

Fits: G2, G2L (G2 L MAX only behind the driver seat), G2S

708200408

\$69⁹⁹



LinQ
SYSTEM™

LinQ BASE

- Made of polypropylene glass fiber.
- Allows you to install LinQ accessories.
- Sold in pack of 4.

Fits: G2L

715002350

\$19⁹⁹

CARGO BAG

- Rugged all-purpose cargo bag with rain cover for additional protection against the elements.
- LinQ Luggage Rack (715001734) is required for G2S.

Fits: G2, G2L, G2S

280000539 • Black

\$154⁹⁹



**RAIN COVER FOR
ADDITIONAL PROTECTION**



LinQ SYSTEM MOUNTS STEEL BASKET IN SECONDS SO YOU CAN LOAD & GO QUICKER

CATCH THE VIDEO

CAN-AMOFFROAD.COM

OUTLANDER RENEGADE



LinQ
SYSTEM™

LinQ HEAVY-DUTY BASKET

- Made of high strength, low-alloy steel.
- Installs without vehicle modification.
- LinQ mount for easy-on, easy-off installation.
- Can be placed on both front and back racks of vehicle.
- LinQ Base (715002350) is required for G2L.
- LinQ Luggage Rack (715001734) is required for G2S.

Fits: G2, G2L (front only for MAX models), G2S

715001215

\$209⁹⁹



LinQ
SYSTEM™

LinQ LOW PROFILE BASKET

- Low profile, open basket increases cargo space.
- Perfect for easy access to tools, rope, winch and plow accessories.
- Multiple bungee cord and tie-down anchor points.
- Made of impact-resistant injected polypropylene.
- LinQ Base (715002350) is required for G2L.

Fits: G2L (front only for MAX models)

715003027

\$159⁹⁹

RENEGADE



REAR BAG FOR RENEGADE 4.5 GAL (17L)

- Weatherproof, scratch-resistant, with a molded rubber bottom.
- Tool-less installation and removal.
- With 2 straps that go underneath the rack and click into the front of the bag.
- Requires Rear Aluminum Rack.

Fits: G2S

715002391

\$179⁹⁹

OUTLANDER

CREATE YOUR ULTIMATE WIND PROTECTION IN 3 EASY STEPS

1 CHOOSE A DELUXE FAIRING COLOR

DELUXE FAIRING

- Innovative, richly-featured wind protection.
- Quick tool-less removal once base brackets are mounted on handlebar.
- 2 cup holders.
- GPS-mounting-kit-ready.

Fits: G2 (except X mr & 6X6), G2L

715000935 • Yellow

715001231 • Red

- Optional mirrors and auxiliary lighting.
- Requires low, high or extra high windshield.
- Tapered Handlebar Adaptor Kit is required for vehicles with 1 1/8" (28 mm) tapered aluminum handlebars.

715001232 • Black

715002479 • Light Grey



\$199⁹⁹

CAMO DECALS FOR BLACK DELUXE FAIRING

- Camo pattern perfectly matches your camo vehicle.

Fits: Deluxe Fairing

715002976

Mossy Oak Break-Up Country Camo

\$44⁹⁹

715001684

Next G-1 Vista Camo

\$44⁹⁹



MOSSY OAK BREAK-UP COUNTRY



NEXT G-1 VISTA

TAPERED HANDLEBAR ADAPTOR KIT

(Not illustrated)

- Required to install Deluxe Fairing on an Outlander X-TP and on any vehicle equipped with 1 1/8" (28 mm) tapered aluminum handlebars.

Fits: Deluxe Fairing

715002470

\$24⁹⁹

2 CHOOSE A DELUXE WINDSHIELD



LOW WINDSHIELD

- 6" (15 cm) windshield allows you to keep your vehicle looking sporty while giving you some protection from the elements and the possibility of enjoying directional lighting.
- Tool-less installation and replacement.

Fits: Deluxe Fairing

715001227

\$59⁹⁹



HIGH WINDSHIELD

- 11" (28 cm) high, for wind protection and winter applications.
- Tool-less installation and replacement.

Fits: Deluxe Fairing

715001211

\$69⁹⁹



EXTRA HIGH WINDSHIELD

- 16" (41 cm) windshield provides the ultimate protection against the elements while touring.
- For wind protection and winter applications.
- Tool-less installation and replacement.

Fits: Deluxe Fairing

715000936

\$94⁹⁹

3 YOU MIGHT ALSO LIKE...

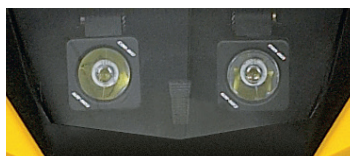
AUXILIARY WINDSHIELD LIGHTING

- 2 premium LED spots for Deluxe Fairing for both increased output and directional lighting.
- 1,800 lumens.
- 2 10W LED Cree light kit.
- Long-range illumination up to 350' (107 m), drawing less than 1 amp per light.

Fits: Deluxe Fairing

715003115

\$309⁹⁹



DELUXE MIRROR KIT

- Improved mounting system.
- Wide rear view.
- Perfect fit with your Deluxe Fairing and Deluxe Windshield.

Fits: Deluxe Fairing

715002353

\$59⁹⁹





DESIGN YOUR OWN DELUXE WIND PROTECTION SOLUTION SEE P. 17



OUTLANDER RENEGADE

PROVIDES EXCELLENT WIND PROTECTION

SPORT WINDSHIELD

- Offers your Renegade wind protection without compromising its sporty look.
- Fits straight and tapered handlebars.
- Easy mounting system allows you to install it effortlessly.

Fits: G2S (except X mr)

- 715001212 • Yellow
- 715001429 • White
- 715001468 • Black

\$179⁹⁹



HIGH WINDSHIELD KIT

- Provides excellent wind protection.
- Fits straight and tapered handlebars.
- Easy mounting system allows you to install it effortlessly.

Fits: G2, G2L, G2S (except X mr)

- 715001937 • Yellow
- 715001938 • Black
- 715002061 • Red

\$184⁹⁹



HANDLEBARS & MIRRORS ¹⁹

OUTLANDER RENEGADE



HANDLEBAR WIND DEFLECTORS

- Rugged injected plastic construction with Can-Am logo.
- Include removable cap for air flow adjustment.
- Mounting kit sold separately.

Fits: G2, G2L, G2S

715000525 • Black / Yellow
715000537 • White / Black
715001706 • Black / Black
715000733 • Yellow / Black

715003811 - Can-Am Red / Black
715003812 - Manta Green / Black
715003813 - Orange / Black
715003814 - Octane Blue / Black

\$24⁹⁹



PASSENGER WIND DEFLECTORS

- These wind deflectors fit on the passenger handles and provide greater comfort while riding.
- Easy to install and remove.

Fits: G2 and G2L (MAX models only)

715001669

\$79⁹⁹

FULL WRAP ALUMINUM MOUNTING KIT

- Lightweight black die cast aluminum construction.
- Includes complete hardware.
- Handlebar wind deflectors sold separately.

Fits: G2, G2L, G2S

715001378

\$84⁹⁹



SHORT ALUMINUM MOUNTING KIT

- Lightweight black die cast aluminum construction.
- Includes complete hardware.
- Handlebar wind deflectors sold separately.

Fits: G2, G2L, G2S

715001379

\$59⁹⁹



ALUMINUM TAPERED HANDLEBAR

- 7/8" - 1 1/8" (22 mm - 28 mm) tapered handlebar made of 6061-T6 aluminum.
- Includes all hardware, center steering foam and cover.

Fits: G2, G2L, G2S

715000550

\$99⁹⁹

MIRROR KIT FOR HANDLEBAR WIND DEFLECTORS

- Do not fit with Full Wrap Aluminum Mounting Kit (715001378).
- Sold in pairs.

Fits: Handlebar Wind Deflectors

860200080

\$24⁹⁹



XT HANDLEBAR PROTECTOR KIT

- Not compatible with Mud Strap (715003053).

Fits: G2, G2L

703100352 • Black

\$74⁹⁹

MIRRORS

- True vision surface 5" x 3" (13 cm x 8 cm).
- Matte finish.
- Stem includes 3/8" (10 mm) thread.

Left - 3/8" (10 mm)

- Bracket (715000190) is required for installation on DS 450.
- Bracket not required for installation on Outlander and Renegade.

709400406

\$29⁹⁹

Right - 3/8" (10 mm)

- Bracket (715000190) required except for vehicles with right hand break.

709400523

\$29⁹⁹



**DRIVER BACKREST DELIVERS
EXTRA SUPPORT SO YOU CAN
COVER EXTRA MILES!**



OUTLANDER



NEW DRIVER BACKREST

- Provides the rider's back with that extra support that makes riding that extra mile way more comfortable.
- Adjusts horizontally to match the driver's height and preference.
- Mounts and locks in firmly onto the vehicle.

Fits: G2
(except MAX models)

715003940

\$219⁹⁹

Fits: G2 and G2L
(MAX models only)

715003942

\$219⁹⁹

Fits: G2L
(except MAX models)

715003941

\$219⁹⁹



OUTLANDER MAX PASSENGER SEAT KIT

- Perfect to replace used or damaged passenger seat.

Fits: G2 2015 and up, G2L
(MAX models only)

715002373

\$589⁹⁹

Fits: G2 2013-2014 (MAX models only)
except with 400 engine)

715002032

\$589⁹⁹

**CATCH THE
VIDEO**



CAN-AMOFFROAD.COM



OUTLANDER RENEGADE



LinQ
SYSTEM™

LinQ 4" (10 CM) RACK EXTENSION

- Fits front or rear.
- Strong and durable.
- Helps keep cargo securely in place.
- Easy and tool-less installation thanks to the LinQ System.

Fits: G2, G2S

715001711 • Silver
715001665 • Black

\$174⁹⁹

- Anti-corrosion coating with durable powder coat finish.
- LinQ Luggage Rack (715001734) is required for G2S.



LinQ
SYSTEM™

LinQ 6" (15 CM) RACK EXTENSION

- Fits front or rear.
- Strong and durable.
- Helps keep cargo securely in place.
- Easy and tool-less installation thanks to the LinQ System.

Fits: G2, G2S

715001712 • Silver
715001671 • Black

\$184⁹⁹

- Anti-corrosion coating with durable powder coat finish.
- LinQ Luggage Rack (715001734) is required for G2S.



OUTLANDER



5" (13 CM) RACK EXTENSION

- Fits front or rear.
- Made of carbon steel.
- Provides tie-down points to secure cargo on racks.

- Easy installation on tubular rack.
- Anti-corrosion coating with durable powder coat finish.

Fits: G2L

715001913

\$104⁹⁹



8" (20 CM) RACK EXTENSION

- Fits front or rear.
- Made of carbon steel.
- Provides tie-down points to secure cargo on racks.

- Easy installation on tubular rack.
- Anti-corrosion coating with durable powder coat finish.

Fits: G2L

715001914

\$119⁹⁹

RENEGADE

LinQ
SYSTEM™

LinQ LUGGAGE RACK

- Bolt-on rack.
- Enables use of LinQ mounted accessories on the G2S.

Fits: G2S

(except X mr models)

715001734

\$239⁹⁹



**BOLT-ON RACK QUICKLY & EASILY LETS YOU ADD
LinQ MOUNTED CARGO ONTO YOUR RENEGADE!**



REAR ALUMINUM RACK

- 30 lb (14 kg) capacity.
- Compact, lightweight aluminum construction.

- Engraved Can-Am logo.
- Stamped 5052 aluminum center plate.
- Easy to install.

Fits: G2S

715001360

\$194⁹⁹



OUTLANDER

LinQ
SYSTEM™

LinQ GUN BOOT RACK

(Not illustrated)

- This lightweight Gun Boot Rack can be mounted on either side of your Outlander using the tool-less LinQ System.
- For use with Gun Boot 6.0 Impact by Kolpin.

Fits: G2 (except MAX, 6X6 & X mr 1000)

715002112 • Black

\$134⁹⁹

Fits: G2 (MAX & X mr 1000 models only)

715002113 • Black

\$129⁹⁹



715001919

GUN BOOT RACK

- Made of steel.
- Designed for the tubular rack.
- For use with Gun Boot 6.0 Impact by Kolpin.
- Can be mounted to either side of the vehicle.

Fits: G2L (except MAX models)

715001918

\$114⁹⁹

Fits: G2L (MAX models only)

715001919

\$114⁹⁹

GEAR GRIPS BY KOLPIN

- Durable, flexible grips cushion and protect while providing a custom fit for a variety of items from 1" to 4" (2.5 cm to 10 cm) in diameter.
- Heavy-duty design for carrying bows, fishing poles, rakes, farm tools and more.
- Quick-release button opens grip quickly for easy access to gear.
- Heavy-duty base system built for the toughest adventures.
- Easy installation on tubular racks, extension racks, brackets or bumpers.
- Sold in pairs.

Fits: G2L

715001421

\$69⁹⁹



GUN BOOT 6.0 IMPACT⁺ BY KOLPIN⁺

- Extra room for pistol-grip-type weapons and small bipods.
- Easily fits firearms up to 51" (130 cm) in total length.
- Provides ample room for 2 3/8" (60 mm) scopes.
- Hatchback design allows easy access.
- Ergonomically designed handle and molded attachment points for sling.

Fits: G2, G2L

715001419

\$79⁹⁹

- Snap-close cover with locking capability.
- Designed to accommodate left and right hand bolt-action rifles and shotguns.
- Includes removable, shock absorbing foam and nylon impact liner for superior interior protection.
- Requires appropriate mounting kit for installation.

MULTI-FIT HOLDER

- Open u-shaped bracket for carrying tools (shovel, axe) and hunting weapons (rifle, bow) that are safely secured, but easily accessible.
- Easy installation on tubular rack, extension racks, basket or bumpers.
- For G2 the LinQ Rack Extension is required.
- Sold in pairs.

Fits: G2, G2L

Single

715002354

\$49⁹⁹

Fits: G2, G2L

Double

715001945

\$69⁹⁹



OUTLANDER RENEGADE

LinQ
SYSTEM™

LinQ MOUNTED GEAR GRIPS BY KOLPIN

(Not illustrated)

- Same features as Gear Grip by Kolpin (715001421).
- Make transporting your tools a snap by combining the Gear Grips with the LinQ System.
- 360° orientation.
- LinQ Luggage Rack (715001734) is required for G2S.

Fits: G2, G2S

715001351

\$104⁹⁹

LinQ
SYSTEM™

LinQ TOOL HOLDER

- Ultra-versatile tool holder.
- Convenient swivel-latch allows tools to be stored in any orientation.
- LinQ Luggage Rack (715001734) is required for G2S.
- Sold in pairs.

Fits: G2, G2S

715003059

\$49⁹⁹

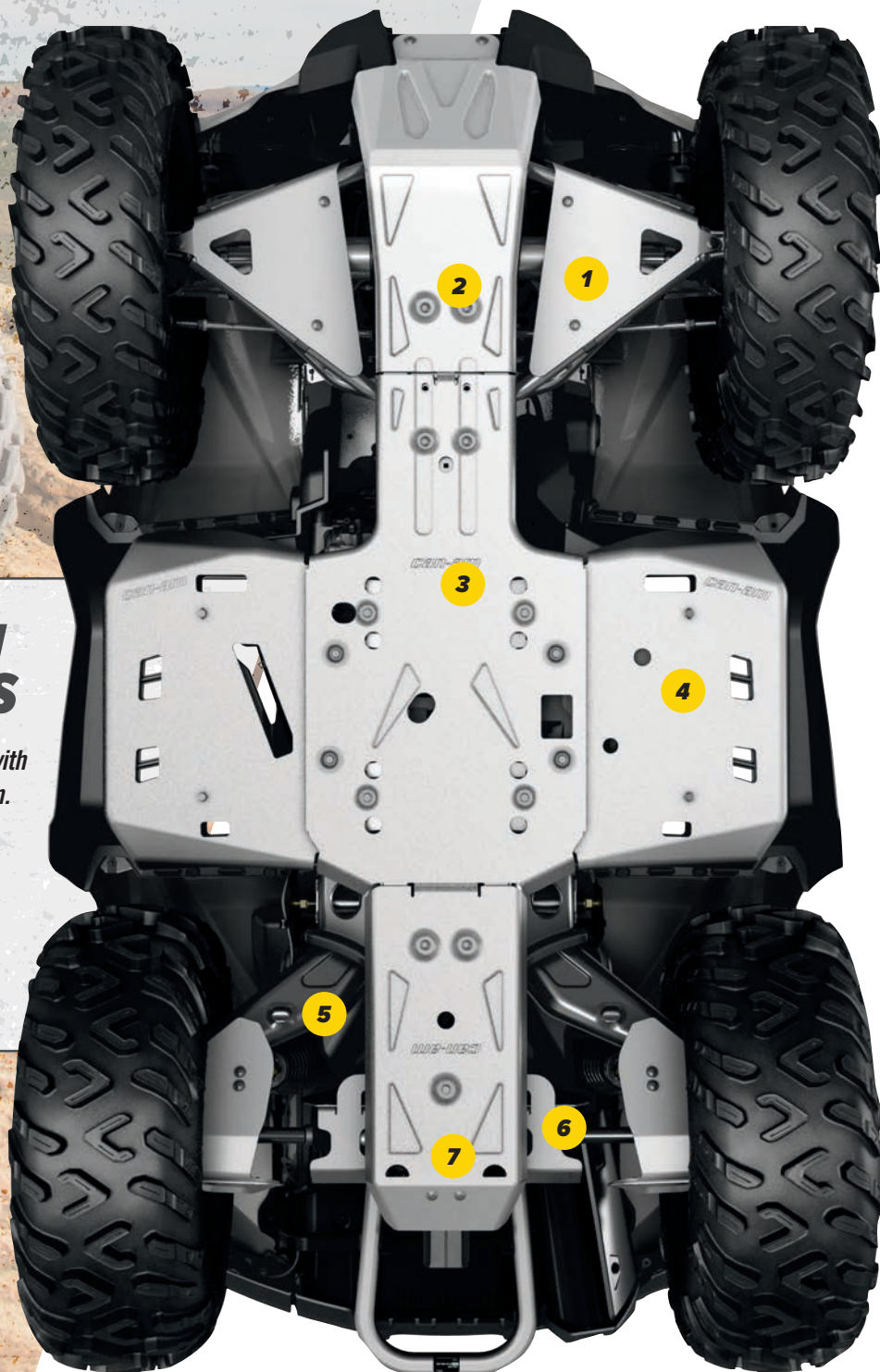


OUTLANDER

ALUMINUM SKID PLATES

Our Aluminum Plates are made with high strength 5052 H32 aluminum. A must-have for rugged terrain.

Offer your Outlander
THE FULL PROTECTION KIT
 or
GET THEM INDIVIDUALLY



OUTLANDER

FIND YOUR
PLATFORM

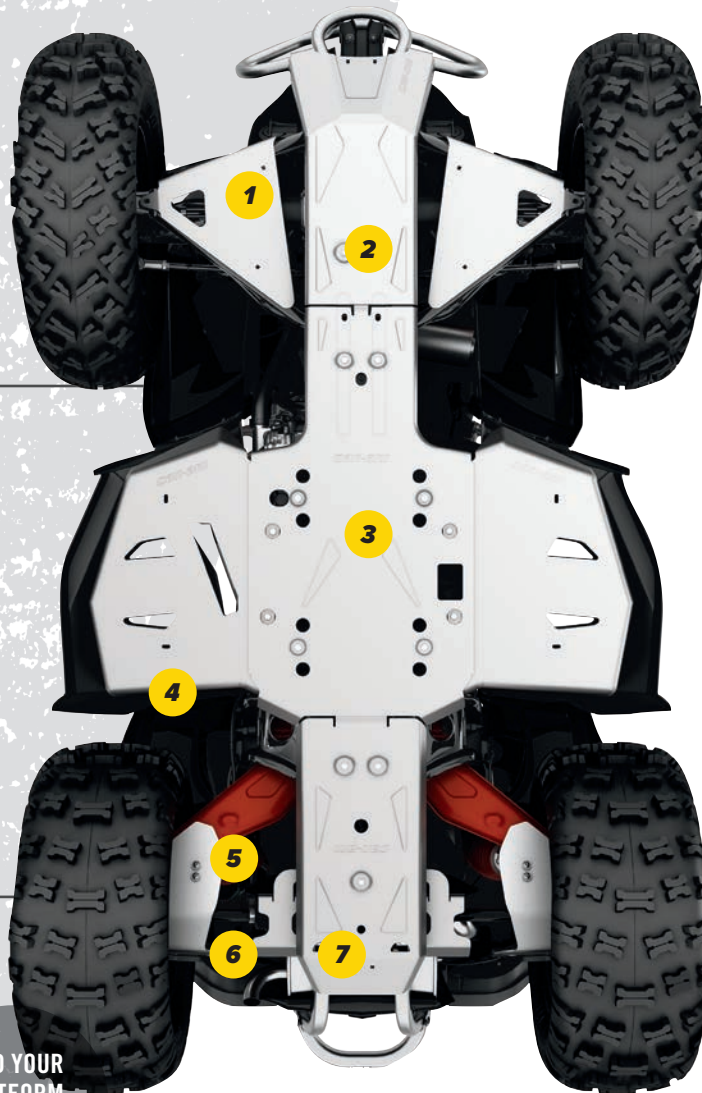
	G2 2016 & PRIOR (EXCEPT MAX MODELS)	G2 2017 & UP (EXCEPT MAX MODELS)	G2 2016 & PRIOR (MAX MODELS & OUTLANDER X MR 1000 ONLY)	G2 2017 & UP (MAX MODELS & OUTLANDER X MR 1000 ONLY)	G2L (EXCEPT MAX MODELS)	G2L (MAX MODELS ONLY)	G2 (6X6 ONLY)
ALUMINUM SKID PLATE PROTECTION KIT	715002137 \$649 ⁹⁹	715004197 \$664 ⁹⁹	715002138 \$679 ⁹⁹	715004198 \$679 ⁹⁹	715004199 \$689 ⁹⁹	715004200 \$704 ⁹⁹	
INDIVIDUAL ALUMINUM SKID PLATES							
1 A-ARM PROTECTORS • 1/8" (3 mm) thick lightweight and durable design. • Add more protection to the CV joints and rubber boots. • Drain holes to release water, mud and debris. • Easy to install. • Replace stock plastic protectors. • Sold in pairs. • Except X mr models.	715001667 \$119 ⁹⁹	715001667 \$119 ⁹⁹	715001667 \$119 ⁹⁹	715001667 \$119 ⁹⁹	715001667 \$119 ⁹⁹	715001667 \$119 ⁹⁹	715001667 \$119 ⁹⁹
2 FRONT SKID PLATE • 3/16" (4.5 mm) thick and die-formed for strength and durability. • Use in conjunction with the central skid plate for full frame protection.	715000926 \$69 ⁹⁹	715000926 \$69 ⁹⁹	715000926 \$69 ⁹⁹	715000926 \$69 ⁹⁹	715001906 \$94 ⁹⁹	715001906 \$94 ⁹⁹	
3 CENTRAL SKID PLATE • 3/16" (4.5 mm) thick for durability and strength. • Drain holes to release water, mud and debris. • Allows access to oil drain plug. • Must be installed with front skid plate.	715002078 \$94 ⁹⁹	715002078 \$94 ⁹⁹	715002078 \$94 ⁹⁹	715002078 \$94 ⁹⁹	715002078 \$94 ⁹⁹	715002078 \$94 ⁹⁹	
4 FOOTWELL PROTECTOR PLATES • 1/8" (3 mm) thick lightweight and durable design. • Use in conjunction with the central skid plate. • Drain holes to release water, mud and debris. • Sold in pairs.	715001359 \$124 ⁹⁹	715001359 \$124 ⁹⁹	715001359 \$124 ⁹⁹	715001359 \$124 ⁹⁹	715001359 \$124 ⁹⁹	715001359 \$124 ⁹⁹	
5 TRAILING ARM PROTECTORS • 1/8" (3 mm) thick lightweight and durable design. • Replace stock plastic protectors. • Sold in pairs.	715001129 \$109 ⁹⁹	715003741 \$109 ⁹⁹	715001129 \$109 ⁹⁹	715003741 \$109 ⁹⁹	715003741 \$109 ⁹⁹	715003741 \$109 ⁹⁹	715001129 (2016 & prior) \$109 ⁹⁹ 715003741 (2017 & up) \$109 ⁹⁹
6 REAR DIFFERENTIAL PROTECTORS • 1/8" (3 mm) thick lightweight and durable design. • Replace stock plastic protector.	715000920 \$59 ⁹⁹	715000920 \$59 ⁹⁹	715000920 \$59 ⁹⁹	715000920 \$59 ⁹⁹	715000920 \$59 ⁹⁹	715000920 \$59 ⁹⁹	
7 REAR SKID PLATE • 3/16" (4.5 mm) thick for durability and strength. • Must be installed with the central and front skid plates.	715002028 \$84 ⁹⁹	715002028 \$84 ⁹⁹	715002029 \$99 ⁹⁹	715002029 \$99 ⁹⁹	715002028 \$84 ⁹⁹	715002029 \$99 ⁹⁹	

RENEGADE

ALUMINUM SKID PLATES

Our Aluminum Plates are made with high strength 5052 H32 aluminum. A must-have for rugged terrain.

Offer your Renegade
THE FULL PROTECTION KIT
or
GET THEM INDIVIDUALLY



FIND YOUR
PLATFORM



G2S 2016 & PRIOR

G2S 2017 & UP

ALUMINUM SKID PLATE PROTECTION KIT

715002139
\$669⁹⁹

715004201
\$684⁹⁹

INDIVIDUAL ALUMINUM SKID PLATES

1 A-ARM PROTECTORS

- 1/8" (3 mm) thick lightweight and durable design.
- Add more protection to the CV joints and rubber boots.
- Drain holes to release water, mud and debris.
- Easy to install.
- Replace stock plastic protectors.
- Sold in pairs.

715001667
\$119⁹⁹

715001667
\$119⁹⁹

2 FRONT SKID PLATE

- 3/16" (4.5 mm) thick and die-formed for strength and durability.
- Recessed bolt holes.

715000925
\$69⁹⁹

715000925
\$69⁹⁹

3 CENTRAL SKID PLATE

- 3/16" (4.5 mm) thick for durability and strength.
- Drain holes to release water, mud and debris.
- Allows access to oil drain plug.
- Standard on Renegade X xc.
- Must be installed with Front Skid Plate.

715002078
\$94⁹⁹

715002078
\$94⁹⁹

4 FOOTWELL PROTECTOR PLATES

- 1/8" (3 mm) thick lightweight and durable design.
- Drain holes to release water, mud and debris.
- Use in conjunction with Central Skid Plate.
- Sold in pairs.

715001359
\$144⁹⁹

715001359
\$144⁹⁹

5 TRAILING ARM PROTECTORS

- 1/8" (3 mm) thick lightweight and durable design.
- Replace stock plastic protectors.
- Sold in pairs.

715001129
\$109⁹⁹

715003741
\$109⁹⁹

6 REAR DIFFERENTIAL PROTECTORS

- 1/8" (3 mm) thick lightweight and durable design.
- Replace stock plastic protector.

715000920
\$59⁹⁹

715000920
\$59⁹⁹

7 REAR SKID PLATE

- 3/16" (4.5 mm) thick for durability and strength.
- Must be installed with the central and front skid plates.

715002028
\$84⁹⁹

715002028
\$84⁹⁹

OUTLANDER RENEGADE

HMWPE SKID PLATES

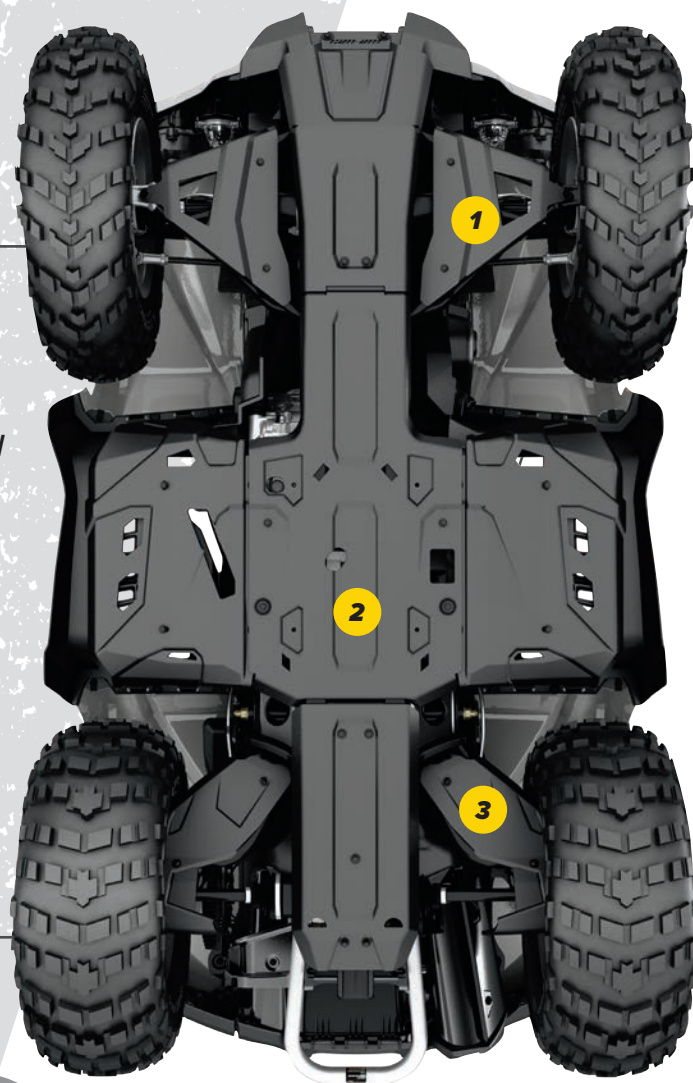
Our Plastic Plates glide smoothly and silently over obstacles, offering great protection in rough terrain. Made of 1/4" (6 mm) thick abrasion-resistant thermoformed High Molecular Weight Polyethylene (HMWPE). Lighter than aluminum. Superior stress crack resistance. High impact strength.

Offer your Outlander & Renegade

THE FULL PROTECTION KIT

or

GET THEM INDIVIDUALLY



FIND YOUR
PLATFORM



	G2 2017 & UP	G2 2016 & PRIOR	G2 MAX 2017 & UP	G2 MAX 2016 & PRIOR	G2L	G2L MAX	G2S 2017 & UP
HMWPE SKID PLATE PROTECTION KIT	715004209 \$639 ⁹⁹	715004214 \$639 ⁹⁹	715004210 \$659 ⁹⁹	715004215 \$659 ⁹⁹	715004211 \$639 ⁹⁹	715004212 \$659 ⁹⁹	715004213 \$639 ⁹⁹
INDIVIDUAL HMWPE SKID PLATES							
1 A-ARM PROTECTORS • Protect CV joints and rubber boots. • Include water and mud drainage holes. • Sold in pairs.	715002924 \$109 ⁹⁹	715002924 \$109 ⁹⁹	715002924 \$109 ⁹⁹	715002924 \$109 ⁹⁹	715002924 \$109 ⁹⁹	715002924 \$109 ⁹⁹	715002924 \$109 ⁹⁹
2 UNDERBELLY PLATES • Include Front Skid Plate, Central Skid Plate, Footwell Protector Plates and Rear Skid Plate. • Allow access to oil drain plug. • Include water and mud drainage holes.	715002926 \$419 ⁹⁹	715002926 \$419 ⁹⁹	715002927 \$439 ⁹⁹	715002927 \$439 ⁹⁹	715002928 \$419 ⁹⁹	715002929 \$439 ⁹⁹	715002974 \$419 ⁹⁹
3 TRAILING ARM PROTECTORS • Include water and mud drainage holes. • Sold in pairs.	715003466 \$109 ⁹⁹	715002925 \$109 ⁹⁹	715003466 \$109 ⁹⁹	715002925 \$109 ⁹⁹	715003466 \$109 ⁹⁹	715003466 \$109 ⁹⁹	715003466 \$109 ⁹⁹
PLASTIC SKID PLATES							
FRONT AND CENTRAL PLASTIC SKID PLATES (Not illustrated) • Designed to protect frame and engine from rough terrain conditions. • Standard on Outlander L DPS® and Outlander L MAX DPS.					715002374 (STD only) \$49 ⁹⁹		

28 **BUMPERS & GUARDS**

**CATCH THE
VIDEO**



CAN-AMOFFROAD.COM



OUTLANDER

COMPLETE RANCHER PROTECTION KIT

(Not illustrated)

Introducing a whole new level of surround protection for your ATV thanks to this Full Body Protection Kit.

Includes:

- Rancher Front Bumper (715003461)
- Rancher Rear Bumper (715003462)
- Body Side Protector (715003459)

Fits: G2, G2L

715003463

\$789⁹⁹

- Requires Body Side Protector Extensions (715003460) for installation on MAX models.



RANCHER FRONT BUMPER

- The heavy-duty bumper designed to pull double duty: protect your ATV and anything it comes in contact with, while also enhancing the look of your ATV.
- Made tough and designed to deliver a rugged appearance, this bumper offers front protection for farmer, rancher and forestry applications.
- The low front end protection and plates allow you to use your ATV within cattle herds and guard the safety of both the vehicle and the animals.
- The flat front portion facilitates gently prodding cattle or pushing light objects, e.g. closing a fence.
- The full frontage coverage extends to provide an extra layer of defense to your headlights and radiator.
- Inside and outside anti-corrosion coating with durable powder coat finish.
- Not compatible with track systems, plows and front hitch.

Fits: G2, G2L

715003461

\$269⁹⁹



RANCHER REAR BUMPER

- The heavy-duty bumper designed to pull double duty: protect your ATV and anything it comes in contact with, while also enhancing the look of your ATV.
- Made tough and designed to deliver a rugged appearance, this bumper offers rear protection for farmer, rancher and forestry applications.
- Ideal for using your ATV within cattle herds and guard the safety of both the vehicle and the animals.
- Coverage extends to provide an extra layer of defense to your tail lights.
- Inside and outside anti-corrosion coating with durable powder coat finish.
- Not compatible with track systems.

Fits: G2, G2L

715003462

\$229⁹⁹

BODY SIDE PROTECTOR

- The heavy-duty fender guard designed to pull double duty: protect your ATV and also enhance the look of your ATV.
- Made tough and designed to deliver a rugged appearance, this fender guard offers full side protection for farmer, rancher and forestry applications.
- Built of durably bold 1.25" (3 cm) diameter steel-tube construction, with inside and outside anti-corrosion coating with durable powder coat finish.
- XT Front and Rear Bumpers or Rancher Front and Rear Bumpers are required for installation.

**Fits: G2 with XT or Rancher Bumpers,
G2L with Rancher Bumpers**

- Requires Body Side Protector Extensions (715003460) for installation on MAX models.

715003459

\$289⁹⁹

**Fits: G2L with
XT Bumpers**

715003614

\$319⁹⁹

BODY SIDE PROTECTOR EXTENSIONS

(Not illustrated)

- This specially designed extension for Body Side Protector (715003459 or 715003614) is made specifically to fit and seamlessly integrate the look of Outlander MAX models.

Fits: G2 MAX, G2L MAX

715003460

\$59⁹⁹

OUTLANDER



XT FRONT BUMPER

- Provides additional protection against the elements.
- Tough and durable, can be added on base Outlander model to convert vehicle into XT model.
- Large tube construction with textured black finish.
- Standard on XT model.

Fits: G2

715000947

\$164⁹⁹



XT FRONT BUMPER

- Large tube construction.
- Protects vehicle frame against obstacles.
- Winch compatible.

Fits: G2L

715001910

\$134⁹⁹



EXTREME FRONT BUMPER

- Ultra-sturdy build.
- Enhances front-vehicle protection.
- Compatible with XT Front Bumper.
- Fits the Apache 360 Track System (when side panels are removed).
- Not compatible with Front Hitch.

Fits: G2

715001286

\$239⁹⁹



EXTREME FRONT BUMPER

- Ultra-sturdy build.
- Enhances front-vehicle protection.
- Compatible with XT Front Bumper.
- Fits the Apache 360 Track System (when side panels are removed).

Fits: G2L

715004279

\$224⁹⁹



XT REAR BUMPER

- Provides additional protection against the elements.
- Tough and durable, can be added on base Outlander model to convert vehicle into XT model.
- Large tube construction with textured black finish.
- Standard on XT model.

Fits: G2

715000948

\$154⁹⁹



XT REAR BUMPER

- Large tube construction.
- Protects vehicle frame against the obstacles.

Fits: G2L

715001911

\$104⁹⁹

RENEGADE
RENEGADE EXTREME FRONT BUMPER

- Enhanced vehicle front protection.
- Required as a mounting point for Radiator Relocator (715001929).

Fits: G2S

715002469

\$214⁹⁹

*ENHANCED
VEHICLE FRONT
PROTECTION.*


OUTLANDER
FENDER FLARE

- Kit designed to deliver extra protection from dirt and debris, therefore a must if you enjoy riding in the mud.
- Made of injected plastic that hugs your vehicle fenders perfectly.
- Gives vehicle added flair for that rugged cool look.
- Includes front and rear extensions and all mounting hardware.

Fits: G2 (except with 30" tires)

715001764

Fits: G2L

715001909

Fits: G2 (with 30" tires)

- Standard on G2 X mr 1000R.

715004250

\$129⁹⁹

FENDER FLARE EXTENSIONS

- Block terrain debris from kicking up onto you as you ride or damaging your vehicle thanks to these extra-large Fender Flare Extensions, which also include mud flaps for added protection from mud/snow, especially when riding with track kits.
- Made of High Molecular Weight Polyethylene (HMWPE) for advanced abrasion resistance.
- Include front and rear extensions.

Fits: G2

- Must be used with Fender Flare for G2 (715001764).

715003458

\$199⁹⁹
Fits: G2L

- Must be used with Fender Flare for G2L (715001909).

715003615

\$199⁹⁹

RENEGADE

FENDER FLARE

- Integrated extended Fender Flare for sporty look and full body protection from dirt and water.
- Includes front and rear extensions and all mounting hardware.

Fits: G2S (except X mr models)

715001681

\$169⁹⁹

**CATCH THE
VIDEO**



CAN-AMOFFROAD.COM

**IT'S A CARGO BOX.
IT'S AN AUDIO RECEIVER
& SPEAKER SYSTEM.
IT'S LinQ VERSATILITY
& CAN-AM INNOVATION.**

OUTLANDER RENEGADE

LinQ
SYSTEM™

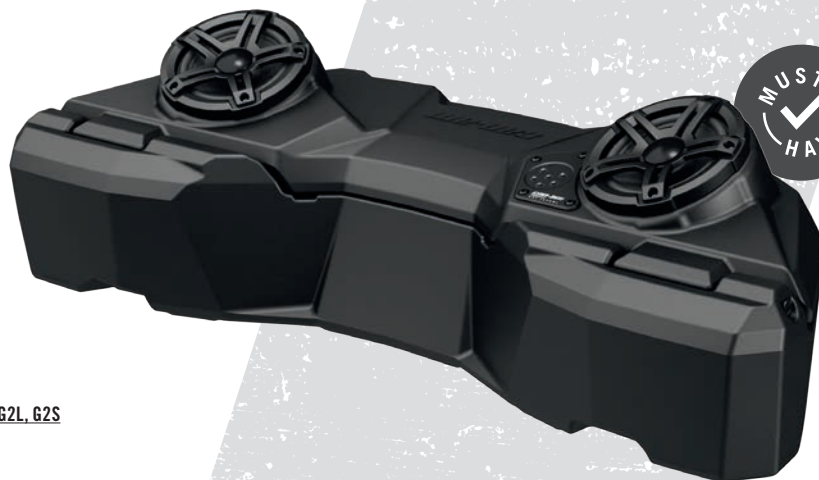
LinQ 11.5 GAL (43L) AUDIO CARGO BOX

- Delivers the best sound quality on the market to sweeten your ride courtesy of a built-in full range high efficiency amplifier.
- Mounts on/off easily to hold/carry cargo safely and securely.
- The Bluetooth enabled receiver and 6.5" speakers are smartly concealed and integrated in the cover.
- Automatic shut-off function protects your battery by turning the system off after 10 minutes of inactivity.
- Backlit control panel perfect for night riding.
- Water-resistant speakers.
- LinQ Base (715002350) is required for G2L.
- LinQ Luggage Rack (715001734) is required for G2S.

Fits: G2 (front only for Outlander 6x6 and Outlander MAX 2013-2014), G2L, G2S

715003018

\$549⁹⁹



OUTLANDER RENEGADE**HEATED HAND GRIPS & THROTTLE COMBO**

Fits: G2, G2L (Wiring Cable (710004567) required for installation), G2S
715003250

\$229⁹⁹

1 LED dimmer facilitates reading temperature settings.

2 4 temperature settings with individual controls for thumb and grips. Returns to previous heat setting.

3 One-touch shutdown.

INDIVIDUAL THUMB & GRIP CONTROLS WITH 4 TEMPERATURE SETTINGS, ONE-TOUCH SHUTDOWN + EASY-TO-READ LED DISPLAY WITH DIMMER. ALL AT YOUR FINGERTIPS.

CYCLOPS 360° PANORAMIC HD VIDEO CAMERA

- Features a 220-degree wide-angle lens.
- Video resolutions up to 4K at 30 frames per second.
- Professional 16MP quality photos.
- Rugged, light and portable.
- Magnetic mount for vibration-free footage and mounting to any metal surface.
- Comes with 32GB Class 10 micro SD card.
- Waterproof case up to 164' (50m).
- Wi-Fi available to remotely control your camera from your smartphone or computer with the free CG360 App.
- 16 modes and effects, including driving mode, loop recording, time lapse and slow motion.
- Comes with 10 mounting accessories.
- Compatible with VR goggles.

9700020090

\$349⁹⁹**OUTLANDER****HEATED PASSENGER GRIPS & VISOR OUTLET**

- Replace your stock passenger handles.
- Dual temperature switch integrated into seat arm for 3-zone heated handles and grips.
- Heated visor outlet integrated into seat arm.

Fits: G2, G2L
(MAX models only)
715001926

\$209⁹⁹

Fits: G2 (2013-2014)
(MAX models only)
715002116

\$209⁹⁹**HEATED VISOR OUTLET**

- Strategically positioned on vehicle to maintain your agility.
- Optional visor outlet that delivers fog-free riding.
- Quick and easy installation.
- Sold individually.
- Heated Visor not included.

Fits: G2, G2L
715001246

\$49⁹⁹**WIRING CABLE**

- Required for installation of Heated Hand Grips & Throttle Combo.

Fits: G2L
710004567

\$9⁹⁹

OUTLANDER RENEGADE



**BAJA DESIGN
ENGINEERS.
THE SCIENTISTS
OF LIGHTING.**



NEW BAJA DESIGNS HIGH BEAM KIT

- Thanks to their direct bolt-on and plug-and-play installation right into the original high beam location, upgrading from your stock high beam lights to these powerful Baja Designs Squadron Pro LED Lights becomes child's play.
- Each spot is equipped with 4 Cree LEDs producing 4,900 lumens at 40 watts.
- Driving/Combo light pattern for smooth blend of light for both near field applications and distance.

Fits: G2

715004284

\$599⁹⁹

FRONT BUMPER LIGHTS

- 2 x 900 lumens 10W LED Cree light kit.
- Long-range illumination up to 350' (107 m), drawing less than 1 amp per light.
- Include multi-position clamps that fit on various tubing sizes.
- Not EC compliant.

Fits: G2 (except X xc), G2L

715001741

\$259⁹⁹



AUXILIARY WINDSHIELD LIGHTING

- 2 premium LED spots for Deluxe Fairing for both increased output and directional lighting.
- 1,800 lumens.
- 2 10W LED Cree light kit.
- Long-range illumination up to 350' (107 m), drawing less than 1 amp per light.

Fits: Deluxe fairing

715003115

\$309⁹⁹



RAM LED SPOTLIGHT

- 540 lumens LED light (9 Watt) heavy-duty spotlight standard-equipped with 1" (2.5 cm) diameter rubber-coated double ball and socket system.

710005423 • Black

\$119⁹⁹



CENTER CONSOLE DAY LIGHT

- Mountable on top end of center console.
- Enhances look of vehicle.

Fits: G2S (except X mr)

715000691

\$59⁹⁹



GARMIN[®] MONTANA[®] 680T GPS

- Rugged and waterproof, the Montana 680T is element-proof.
- 4-inch dual-orientation, sunlight-readable touchscreen and glove-friendly touchscreen display, to give you vivid colors and high-resolution images.
- 8-megapixel autofocus camera automatically geotags photos.
- Tracks both GPS and GLONASS satellites for improved positioning and typically faster fixes.
- Preloaded TOPO maps, plus 1-year BirdsEye Satellite Imagery subscription.
- 3-axis compass with barometric altimeter.
- Specific GPS cradle included (vehicle mounting kit required).
- Includes a preloaded map for US.

Fits: G2, G2L, G2S

715002830

\$659⁹⁹

EUROPEAN VERSION

- EC compliant.
- Includes preloaded European recreation map.

715003456

CANADIAN MAP FOR GARMIN MONTANA 680T GPS

- Additional and readily-programmable Canadian basemap for Garmin Montana 680T GPS system.
- Requires Garmin Montana 680T GPS (715002830).

710005065

\$129⁹⁹

GPS RAM[®] MOUNT FOR HANDLEBAR

- Convenient bracket for installing the Garmin Montana GPS (not included) onto your unit's handlebar.

Fits: G2, G2L, G2S

715001985

\$59⁹⁹



YUASA[®] AUTOMATIC 1 AMP BATTERY CHARGER

- Keeps your battery charged and ready to ride.
- Hook it up - plug it in - charge. Includes adapter and clips.
- 3-stage charge cycle switches automatically to maintenance mode.
- Easy-to-read 3-color LED charge monitor.
- Built-in overcharge prevention.

529036307

\$41⁹⁹



**BE READY FOR ANYTHING WITH THE RUGGED
HEAVY-DUTY PULLING POWER OF A WINCH!**

1 **CHOOSE YOUR VEHICLE**

2 **CHOOSE YOUR WINCH**
See page 35 for more information.

3 **INSTALLATION REQUIRES**

		HARNESS	MOUNTING PLATE
G2	Can-Am Terra Winches by Superwinch or Warn Provantage Winches	NA	NA
G2L	Can-Am Terra Winches by Superwinch or Warn Provantage Winches	715002453 (For Warn winches only)	NA
G2S	Warn Provantage Winches	NA	715000927

OUTLANDER

CAN-AM TERRA BY SUPERWINCH⁺

- Heavy-duty 4-way roller fairlead.
- Ergonomic clutch handle.
- Rugged all-steel gears and bushings, provides more torque and longer life.
- Automatic 100% load-holding brake.

- Sealed solenoid for all weather protection.
- Corded 10 ft. (3 m) weather sealed hand-held remote.
- Weather sealed handlebar mounted switch.
- EC Compliant.

**CAN-AM TERRA 25 WINCH BY SUPERWINCH**

- Pulling strength capability of 2,500 lb (1,134 kg).
- 50 ft. of 3/16" (15.2 m of 4.8 mm) wire steel cable.

Fits: G2, G2L

715003475

\$319⁹⁹**CAN-AM TERRA 35 WINCH BY SUPERWINCH**

- Pulling strength capability of 3,500 lb (1,588 kg).
- 50 ft. of 13/64" (15.2 m of 5.2 mm) wire steel cable.

Fits: G2, G2L

715003476

\$359⁹⁹

OUTLANDER RENEGADE

WARN⁺ PROVANTAGE

- Patented roller disc brake for outstanding control while winching.
- Ergonomic clutch handle.
- Three-stage planetary gear train for smooth, efficient operation.

- All-metal gear housing and gears.
- Fully sealed motor and drive train to keep the elements out.
- Corded remote and mini-rocker control switch with integrated socket.

- Limited lifetime warranty for mechanical components and 3-year warranty for electrical components.
- Winch mounting plate (715000927) is required for G2S.
- Winch wire harness (715002453) is required for G2L.
- EC Compliant.

**WARN PROVANTAGE 2500-S WINCH**

- Double powder coated hawse fairlead.
- Pulling strength capability of 2,500 lb (1,134 kg).
- 50 ft. of 3/16" (15.2 m of 4.8 mm) synthetic rope.

Fits: G2, G2L, G2S

715003472

\$579⁹⁹**WARN PROVANTAGE 3000 WINCH**

- Roller fairlead.
- Pulling strength capability of 3,000 lb (1,361 kg).
- 50 ft. of 3/16" (15.2 m of 4.8 mm) wire steel cable.

Fits: G2, G2L, G2S

715003474

\$549⁹⁹**WARN PROVANTAGE 3500-S WINCH**

- Double powder coated hawse fairlead.
- Pulling strength capability of 3,500 lb (1,588 kg).
- 50 ft. of 3/16" (15.2 m of 4.8 mm) synthetic rope.

Fits: G2, G2L, G2S

715003473

\$679⁹⁹

OUTLANDER RENEGADE



WARN HAWSE FAIRLEAD

- Double powder coated construction.
- Required to use the Synthetic Winch Cable (715004254) on Warn winches.
- To be used with synthetic winch cables only.

Fits: Warn winches

715004255

\$69⁹⁹



WINCH MOUNTING PLATE

- Adds functionality to your Renegade.
- Fits Can-Am winches by Warn.

Fits: G2S

715000927

\$109⁹⁹

WIRELESS REMOTE CONTROL

- The system is quick and easy to install, thanks to a wiring harness with an integrated antenna and all necessary mounting hardware.
- The system allows you to operate your winch from anywhere within a 50' (15.2 m) radius, increasing your recovery options.
- All components are weatherproof.

Fits: Warn winches

715002542

\$179⁹⁹



WIRED REMOTE CONTROL

- This kit allows winch owners to add the hand-held remote to their winch.
- Works in conjunction with the mini-rocker switch.
- EC compliant.

Fits: For ATVs with handlebar winch remote socket.

710002270

Fits: ATVs without the winch remote socket on the handlebar

- Side panel Remote socket (715003651) is required.
- EC compliant.

710001002

\$59⁹⁹

Fits: Superwinch winches

710004887

\$19⁹⁹



WARN REMOTE SOCKET

- (Not illustrated)
- Winch remote socket, located on side panel is required for wired remote control.

715003651

\$24⁹⁹

WINCH WIRE HARNESS

- (Not illustrated)
- Required plug-and-go wiring to install Warn winch only.
- Not required for Can-Am Terra winch.

Fits: G2L

715002453

\$39⁹⁹

HARDWARE ADAPTER KIT

- (Not illustrated)
- Required to install Warn Winch Kit (715002500, 715002561, 715002499) on 2016 and up models.
- Required to install Can-Am Terra 25 Winch (715002167) and Can-Am Terra 35 Winch (715002057) on G2L 2017 and up models.

715003477

\$29⁹⁹

WINCH ACCESSORIES KIT

- Get the most out of your winch.
- Double your pulling power, change your pulling direction and keep your winch in proper working order.
- Includes tree straps, snatch block, shackle and winching gloves.

715002409

\$104⁹⁹



ROLLER FAIRLEAD

- Features top, bottom and side rollers for less cable wear and smoother operation from any direction for easier winching.

715000011 • Warn

\$59⁹⁹

705204571 • Superwinch

\$29⁹⁹



HOOK WITH SAFETY LATCH & STRAP KIT

- Heavy-duty winch-rope hook with stainless steel snap.
- Includes a nylon safety strap.

715003523

\$29⁹⁹



REPLACEMENT WIRE ROPE

- Play it safe, always carry a replacement wire rope.
- 3,500 lb (1,588 kg) pulling strength.

Fits: ATV SuperWinch

- 50 ft. of 7/32" (15.2 m of 5.5 mm) wire rope.

705009321

\$29⁹⁹

Fits: ATV Warn winches

- 50 ft. (15.2 m) aircraft grade steel wire.
- 3/16" (4.8 mm) diameter.

715000047

\$59⁹⁹



SYNTHETIC WINCH CABLE

- Easier to manipulate than steel cable.
- Replaces the original cable on any factory installed Warn winch or sold as an accessory by BRP.
- Kit includes synthetic rope and rock guard sleeve.
- Always use with new hawse fairlead (715004255).
- 50 ft. (15.2 m).
- 3,500 lb (1,588 kg) pulling strength.

715004254

\$114⁹⁹



OUTLANDER



FRONT RECEIVER HITCH

- Front receiver hitch for Outlander with or without a winch.
- This hitch offers 1,300 lb (590 kg) of towing capacity.
- Allows you to maneuver your trailer easily in tight, confined areas.
- Hitch bar sold separately.
- Not compatible with Extreme Front Bumper and Rancher Bumper.

Fits: G2

715000921

\$84⁹⁹

OUTLANDER RENEGADE



FRONT & REAR HITCH DRAWBAR

- Standard on 2" (5 cm) receiver hitch.
- It offers 1,300 lb (590 kg) of towing capacity.
- Hitch ball not included.

Fits: G2, G2L, G2S

715000972

\$79⁹⁹

EUROPEAN VERSION

- Drawbar with 2" (50 mm) hitch ball.

715001473

705206264 (T Homologated)



RUBBER RECEIVER PLUG

- Rubber cap for 2" (5 cm) hitch receiver.

705204503

\$10⁹⁹

REAR HITCH

- E-coat finish.
- Fixed hitch ball mounting bracket.
- Provides fixed mounting point for trailer ball to provide vehicle with towing capabilities.
- This hitch offers 1,300 lb (590 kg) of towing capacity.
- Hitch ball not included.

Fits: G2, G2L, G2S

715001925

\$49⁹⁹



REAR RECEIVER HITCH

- E-coat finish.
- Does not affect ground clearance.
- Trailer ball not included.
- This hitch offers 1,300 lb (590 kg) of towing capacity.

Fits: G2L, G2S

715001329

\$84⁹⁹



**WE'LL MAKE YOU
READY FOR MUD.**



OUTLANDER

OUTLANDER RADIATOR RELOCATOR KIT

- Relocates radiator to top mount position.
- Prevents cooling performance loss in muddy conditions.
- Uses existing radiator.
- Includes support, hardware and hoses.
- Engineered for easy cooling system bleeding and maintenance.
- Radiator not included.

Fits: G2, G2L

715001930 • Black

\$379⁹⁹



**RELOCATE YOUR RADIATOR
UP & AWAY FROM THE MUD!
YOU'LL LEAVE OVERHEATING
BEHIND AND RIDE COOL!**

OUTLANDER SNORKEL KIT

- Comprehensive kit.
- Extended air intakes and CVT exhaust.
- CVT Outlet integrates into pod cover.
- Ideal for muddy conditions.
- Must be installed on a vehicle without XT handlebar protector kit.
- For 6x6, appropriate gauge support is required for best fit and finish.
- Not compatible with windshields.

Fits: G2, G2L

715002392

\$359⁹⁹

Fits: G2 (2012-2014 only)

715001730

\$359⁹⁹

Fits: G2 (X mr models only), G2L

(X mr models only)

- Raised horn only.
- Provides higher intake.
- For best fit and finish, appropriate gauge support is required.

715002518

\$89⁹⁹



**TRANSFORM YOUR VEHICLE INTO THE ULTIMATE
CREEK CONQUERING MUD-RIDING MACHINE!**



X MR TRACTION PLATES

- Provide extra foot grip for driver when riding in extreme mud conditions.
- Help driver to maintain ideal riding position to maximize vehicle traction.
- Made of aluminum.
- Not meant for a passenger.

Fits: G2, G2L (MAX models only)

715001752 • Aluminum

\$99⁹⁹

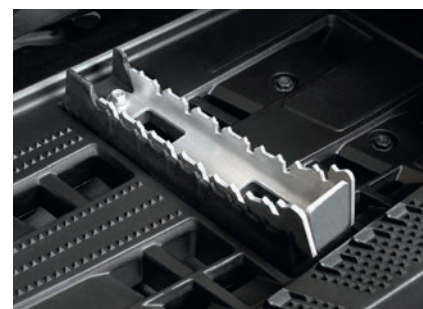
FOOTPEG KIT

- Provides maximum integrated grip and more stability during vigorous riding.
- Kick-up end generates added grip during hard cornering.
- Made of aluminum.
- Sold in pairs.

Fits: G2, G2L

715001131

\$44⁹⁹



RENEGADE



RENEGADE SNORKEL KIT

- Comprehensive kit.
- Extended air intakes and CVT exhaust.
- CVT Outlet integrates into pod cover.
- Ideal for muddy conditions.

Fits: G2S

715001928

\$449⁹⁹

ADAPTOR KIT

(Not illustrated)

- Necessary to install the G2S Snorkel Kit (715001928) on 2012 to 2014 models.

Fits: G2S (for 2012-2014 models only)

715003122

\$44⁹⁹



RENEGADE RADIATOR RELOCATOR KIT

- Relocates radiator to top mount position.
- Prevents cooling performance loss in muddy conditions.
- Uses existing radiator.
- Includes support, hardware and hoses.

Fits: G2S

715001929

\$379⁹⁹

- Engineered for easy cooling system bleeding and maintenance.
- Radiator not included.
- Renegade Extreme Front Bumper (715002469) required for installation (except X mr).

OUTLANDER RENEGADE

MUD STRAP

- Convenient sturdy grab-handle.
- Lets drivers redistribute their weight for improved traction in demanding conditions.
- Not compatible with XT Handelbar Protector Kit (703100352).

Fits: G2, G2L, G2S

715003053

\$39⁹⁹



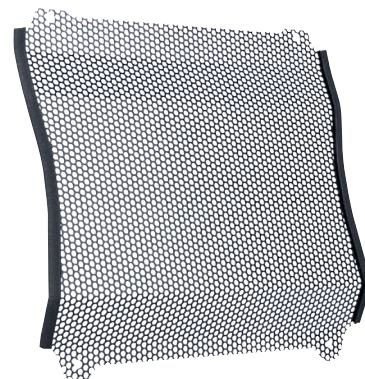
RADIATOR PROTECTOR

- Metal shield which mounts over radiator face, providing protection from stones and branches.

Fits: G2, G2S (except G2S with 500 engine)

715001744

\$59⁹⁹





**CATCH THE
VIDEO**



CAN-AMOFFROAD.COM

YOSHIMURA
EXHAUST MADE IN THE USA FOR
can-am

**YOSHIMURA GIVES YOU THE EDGE WITH
MORE PERFORMANCE & LESS WEIGHT.**

OUTLANDER



YOSHIMURA
EXHAUST MADE IN THE USA FOR
can-am

YOSHIMURA SLIP-ON EXHAUST

- Made from 304-grade stainless steel.
- Better sounding, better looking and lighter than stock muffler.
- USDF/USDA approved spark arrester.
- NON EPA compliant (for racing application only).
- Not EC compliant.
- Fuel injection system tuning not required.

Fits: G2 (except 6x6 models)

715001738

\$429⁹⁹

RENEGADE



YOSHIMURA
EXHAUST MADE IN THE USA FOR
can-am

YOSHIMURA SLIP-ON EXHAUST

- Made from 304-grade stainless steel.
- Better sounding, better looking and lighter than stock muffler.
- USDF/USDA approved spark arrester.
- NON EPA compliant (for racing application only).
- Not EC compliant.
- Fuel injection system tuning not required.

Fits: G2S (except X mr models)

715001739

\$529⁹⁹

OUTLANDER RENEGADE

FOX SHOCKS

- Engineered for the more aggressive riders.
- Offers increased bump absorption and better roll control.
- Offers a slightly firmer ride than standard kits but remains very useable for all-around use.
- Kit includes 4 shocks and springs.
- Rebuildable.
- Threaded preload adjusters.

Fits: G2 (except X mr, XT-P, Limited & 6x6), G2 X mr 650 & G2S (base model with 500 & 570 only)

715001471

\$579⁹⁹



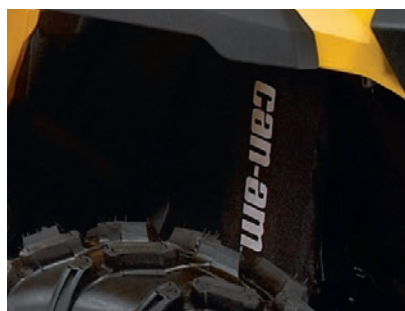
FOX PERFORMANCE SHOCKS 1.5 PODIUM X RC2 HPG

- High-performance front and rear shocks.
- Allow handling to readily adapt to terrain and riding style.
- Easy-adjust dual-speed compression, rebound and preload settings.
- Standard on G2S X xc.

Fits: G2 (except X mr, Limited & 6x6), G2 X mr 650 & G2S (base model & X mr 570 only)

715003201

\$1,999⁹⁹



FRONT SHOCK COVERS

- Feature ventilation holes.
- Offer added protection in rough terrain and weather conditions.
- Sold in pairs.

Fits: G2, G2L, G2S

715500301

\$39⁹⁹

HEAVY-DUTY SPRINGS

- Heavy-duty springs provide enhanced stiffness.
- Perfect for snow clearing and hauling heavy loads.
- Improves handling and helps prevent accidental overturns.
- Sold in pairs.
- Standard on Outlander Pro and Mossy Oak models

Fits: G2

FRONT

G2 (base model, DPS, XT, X mr with 650 engine only & Limited), G2S (base model with 500 & 570 engines only)

715003199

\$99⁹⁹

REAR

G2 (base model, DPS, XT & X mr with 650 engine only), G2S (base model with 500 & 570 engines only)

715003200

\$99⁹⁹



Front



Rear

FOAM AIR FILTER BY TWINAIR⁺

- Maximizes performance by increasing air flow throughout RPM range.
- Maintenance-friendly, i.e. just wash, re-oil and re-use after riding in severely dusty/muddy environments.

Fits: G2, G2S

715001333

\$69⁹⁹





TRAILERING COVERS

- Heavy-duty canvas made of UV-resistant solution-dyed polyester.
- Inner soft liner protects windshield and colored panels from abrasion.
- All high abrasion areas are reinforced with a double canvas layer.
- Opening for fuel cap access.
- Weather-resistant trailable cover protects your vehicle during transportation.
- Quick and easy installation.
- Designed to perfectly fit your vehicle with or without Can-Am accessories.

STORAGE COVERS

- Weather-resistant storage cover.
- For vehicle storage only.
- UV-resistant solution-dyed polyester construction.
- Quick and easy installation.
- Designed to perfectly fit your vehicle with or without Can-Am accessories.

Fits: G2 (except MAX models)

715001737

\$194⁹⁹

Fits: G2 (MAX models only)

715001736

\$219⁹⁹

Fits: G2L (except MAX models)

715002026

\$194⁹⁹

Fits: G2L (MAX models only)

715002025

\$219⁹⁹

Fits: G2S (except X mr models)

715000683

\$159⁹⁹

Fits: G2 Xmr (except 1000R), G2L Xmr, G2S, G2S Xmr

715001720

\$144⁹⁹

Fits: G2 MAX, G2L MAX, G2 Xmr 1000

715001668

\$154⁹⁹

Fits: G2L (except MAX models)

715001916

\$134⁹⁹

Fits: G2L (except MAX models)

715001597 • Mossy Oak Break-Up Country Camo

\$209⁹⁹

Fits: G2L (MAX models only)

715001735 • Mossy Oak Break-Up Country Camo

\$219⁹⁹



DECAL

• 6" x 12 3/4" (15 cm x 32 cm)

704901483

\$13⁹⁹

LICENSE PLATE BRACKET

- Provides specific area to install license plate.
- Mounts to rear of vehicle.

Fits: G2L

715002498

\$19⁹⁹

Fits: G2S

715001401

\$19⁹⁹



LOCKABLE GAS TANK CAP

- Protects your fuel.
- Meets EPA requirements.

Fits: G2, G2L, G2S

860200387 • Black

\$39⁹⁹



CUP HOLDER

- Mounts easily to handlebars or racks.

715000121

\$79⁹⁹

RATCHET TIE-DOWNS

- 400 lb (181 kg) safe working load.
- 1" x 10' (2.5 cm x 3 m) strap with Sea-Doo, Ski-Doo and Can-Am logos.
- Deluxe ratchet with rubber handle.
- Coated S hooks.
- Pack of 2.

860200447 • Black/Grey

\$16⁹⁹



FLAG

- Make sure everyone knows what you're riding.
- Perfect for the dunes and new riders.
- 8-foot (2.4 m) length.
- Includes flag mount (715000127).

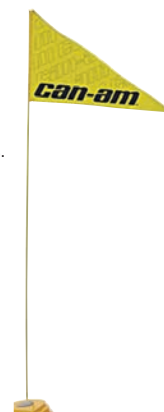
715000277 • Yellow

\$24⁹⁹

FLAG MOUNT

715000127

\$19⁹⁹



GO OFF THE
BEATEN PATH

CLIMB
HIGHER

RIDE IN
DEEP SNOW

WITH THE **NEW** APACHE BACKCOUNTRY TRACK SYSTEM.

CATCH THE
VIDEO

CAN-AMOFFROAD.COM

THE PERFECT FUSION
OF SKI-DOO SNOWMOBILE
& APACHE TRACK
TECHNOLOGY. DELIVERS
BETTER DEEP-SNOW
PERFORMANCE THAN ANY
OTHER ATV TRACK SYSTEM.



APACHE TRACK SYSTEMS

• Highly engineered track system provides ultimate traction in deep snow for your Can-Am vehicle.

WINTER TRACKS

Can-Am's new Apache Backcountry Track System is the perfect fusion of BRP's renowned snowmobile and innovative Apache 360 Track System technologies. It delivers the highest ground clearance, the most flotation, and the best deep-snow performance of any ATV track kit on the market today. Period. An efficient frame and rail design ensures weight is spread evenly on snow so you always enjoy higher traction, remarkable acceleration, turning, braking and side-hilling. And it's the only kit available with a 13.5" X 96" (34 cm x 244 cm) front track / 14" X 138" (36 cm x 351 cm) rear track, which adds up to the largest contact patch anywhere.

**CLIMB HIGHER, RIDE IN DEEPER SNOW
AND GO OFF THE BEATEN PATH.**



NEW APACHE BACKCOUNTRY TRACK SYSTEM

- Designed to deliver the best flotation level and deep-snow performance on the market.
- Contact patch is 23% bigger than the Apache 360 LT.
- Impressive ground clearance of 20.3" (51.6 cm), keeps the vehicle out of deep snow.
- Aggressive track design with 2" (5 cm) lug height for maximum traction on snow.
- Apache Backcountry Mounting Kit is required.
- For winter use only.

Fits: G2 (except 6x6), G2S

715003042

\$5,349⁹⁹

NEW APACHE BACKCOUNTRY MOUNTING KIT

(Not illustrated)

- Simple system that reduces installation time.
- Includes DPS Module.
- Required for installation of the Apache Backcountry Track System.

Fits: G2 (except 6x6), G2S

715003043

\$649⁹⁹



IDLER WHEEL KIT

- Reduces drag and rolling resistance.
- Includes 2 wheels, brackets and hardware.
- Add up to 2 kits per rear track.
- Can extend slider life in hardened snow conditions.

Fits: Apache Backcountry Track System, rear tracks only

860201230 • 141 mm

\$69⁹⁹



SLIDERS WITH VESPEL[†] INSERTS

- Use DuPont Vespel inserts for less friction.
- Longer life.
- Can be cut to desired length.
- 8 needed per vehicle.
- Sold individually.

Fits: Apache Backcountry Track System

503194815 • Black

\$84⁹⁹

• Heavy-duty components ensure reliability and the design offers excellent acceleration, turning, braking and side-hilling performance.

• The DPS⁺ module, included in the mounting kits, optimizes your Dynamic Power Steering (DPS) performance by maximizing steering agility at lower speeds while providing firmer steering at cruising speeds. It also provides a speed correction factor for the speedometer.

YEAR ROUND TRACKS

The Apache 360 and 360 LT Track Systems offer a unique adjustable contact patch engineered to take on the toughest conditions, year round. Their built-in versatility means you can optimize your attack angle in rough terrain, or dial it down for enhanced deep-snow flotation – it's that easy. They're great in muddier, softer spring thaw conditions so you can work or play wherever and whenever you want. Their superior ground adhesion makes them a favorite for navigating swamps and bogs.



APACHE 360 LT TRACK SYSTEM

- Multifunctional tracks designed to support heavy loads and to fit on most Can-Am off-road vehicles.
- Extra contact patch adjustment for better performance over rough terrain.
- Contact patch is 7 to 9% bigger than the Apache 360's.
- Average ground clearance of 17.3" (44 cm).
- 1" (2.5 cm) lugs in the front and 1.25" (3.2 cm) in the back.
- Apache 360 Mounting Kit and Apache 360 LT ATV Adaptor are required.

Fits: G2 (except 6x6), G2S

715003064

\$4,539⁹⁹

APACHE 360 TRACK SYSTEM

- Multifunctional tracks perfect for any Can-Am ATV.
- Average ground clearance of 16" (41 cm).
- 1" (2.5 cm) lugs in the front and 1.25" (3.2 cm) in the back.
- Apache 360 Mounting Kit is required.

Fits: G2 (except 6x6 models), G2L, G2S

715001981

\$3,689⁹⁹



Unique adjustable contact patch system to tackle the toughest year-round conditions.



Easy installation and quick conversion from tires to tracks.



Rubber over molded heavy-duty double bearing wheels and offset wheel spacing reduce friction and vibration while ensuring reliability.

APACHE 360 MOUNTING KIT

(Not illustrated)

- Simple system that reduces installation time.
- Includes DPS Module.
- Requires Apache 360 LT ATV Adaptor (715003063) for installation of the Apache 360 LT Track System.

Fits: G2 (except 6x6 models), G2L, G2S

715002388

\$309⁹⁹

APACHE 360 LT ATV ADAPTOR

(Not illustrated)

- Required to install an Apache 360 LT Track System (715003064).
- Apache 360 Mounting Kit (715002388) also required.

Fits: G2 (except 6x6 models), G2S

715003063

\$149⁹⁹

DPS MODULE

(Not illustrated)

- Calibrates speedometer and DPS support for Apache and Backcountry Track Kits.

Fits: G2L (except base models), G2 (except base models), G2S

715001202

\$179⁹⁹

AIR INTAKE PRE-FILTER

- Adds extra protection for your engine in harsh riding conditions.
- Filter blocks particles larger than 0.005".
- A pre-filter is necessary to maintain the vehicle warranty when an Apache 360 Track System or an Apache 360 LT Track System is installed.

Fits: G2, G2L, G2S

715000291

\$29⁹⁹



PLOW KITS

OUTLANDER

TURN YOUR VEHICLE INTO A SNOW CONQUEROR!

60" (152 CM) ALPINE FLEX PLOW KIT

Fits: G2, G2L
715003149

\$984⁹⁹

KIT INCLUDES:

60" (152 cm) Alpine Flex Plow
715001181 • Black

Alpine Flex Push Frame with
Quick-Attach System
715001847

Plow Mounting Kit
715001411



60" (152 CM) ALPINE SUPER-DUTY STRAIGHT PLOW KIT

Fits: G2, G2L
715003148

\$714⁹⁹

KIT INCLUDES:

60" (152 cm) Alpine
Super-Duty Straight Plow
715000648 • Yellow

Alpine Super-Duty Push Frame
with Quick-Attach System
715001182

Plow Mounting Kit
715001411



OUTLANDER

RENEGADE

54" (137 CM) ALPINE SUPER-DUTY STRAIGHT PLOW KIT

Fits: G2, G2L, G2S
715003147

\$574⁹⁹

KIT INCLUDES:

54" (137 cm) Alpine
Super-Duty Straight Plow
715000208 • Black

Alpine Super-Duty Push Frame
715001064

Plow Mounting Kit
715002858



ALPINE FLEX PLOWS ⁴⁷

**ULTRA-FLEXIBLE
UHMWPE CONSTRUCTION
DELIVERS THE HIGHEST
IMPACT-STRENGTH
RATING OF ANY
THERMOPLASTIC PLOW
ON THE MARKET!**

OUTLANDER RENEGADE

PLOWS

ALPINE FLEX PLOW 54" (137 CM) & 60" (152 CM)

- Clears 50" (127 cm) or 54" (137 cm) when plow is angled.
- Ideal for clearing narrower areas, like sidewalks.
- Plow made of flexible UHMWPE, which delivers the highest impact strength of any thermoplastic presently made.
- Enormous flex action prevents damaging your plow when accidental impact happens.
- Impact absorption properties return plow to its original shape.
- Rearward release action practically eliminates jolts from being transferred to the driver or unit.
- Attaches and detaches effortlessly thanks to a fast and easy mounting system.
- Blade-turning mechanism mounted high to eliminate having to bend down to change or adjust blade's angle.
- High pivot point keeps plow on pavement.
- Compatible with all Alpine Flex Plow accessories to further enhance plow versatility.

Fits: G2, G2L, G2S

54" (137 cm)

715001677

\$339⁹⁹

60" (152 cm)


715001181

\$369⁹⁹



60" (152 cm)

BUILD YOUR CUSTOM ALPINE FLEX PLOW SYSTEM IN 4 EASY STEPS

1 FIND YOUR PLATFORM	2 MATCH THE PUSH FRAME	3 MATCH THE MOUNTING KIT	4 CHOOSE THE PLOW WIDTH	ADD 
G2, G2L	715001847	715001411	60" (152 cm) Alpine Flex Plow 715001181 OR	Add Alpine Flex Push Frame Extension (715001389) if using Alpine Flex UHMW Thermoplastic Plow with Apache 360, 360 LT and Backcountry Track System
G2S	715001848		54" (137 cm) Alpine Flex Plow 715001677	

PUSH FRAME**ALPINE FLEX PUSH FRAME WITH QUICK-ATTACH SYSTEM**

- Includes cable saver limit switch and plow roller fairlead.
- Refer to the chart on page 50 for the fitting.

715001848

\$509⁹⁹

715001847

\$509⁹⁹**ALPINE FLEX PUSH FRAME EXTENSION**

- Bolt-on push frame extension for use with Apache 360, 360 LT and Backcountry Track System.
- Does not alter plow functionality.
- Fits Alpine Flex Push Frames (715001847 and 715001848).

Fits: Alpine Flex Plows

715001389

\$104⁹⁹**MOUNTING KIT****PLOW MOUNTING KIT**

(Not illustrated)

- Required to install Alpine Super-Duty Push Frames with Quick-Attach System (715001182, 715001474) and Alpine Flex Push Frames (715001847, 715001848).
- Mounting plate precision-designed to stay on year round without compromising ground clearance.

715001411

\$104⁹⁹

- Fits with or without Can-Am Skid Plates.
- Refer to the chart on page 50 for the fitting.

ALPINE FLEX PLOW ACCESSORIES**ALPINE FLEX PLOW EDGE MARKERS**

- For a more accurate view of the width of your plow so you avoid damaging your curb, your car or your house.

Fits: Fit Alpine Flex Plows

715001388

\$39⁹⁹**ALPINE FLEX DRIFT CUTTER**

- Keeps snow securely in the plow.
- Fits on either left or right side.
- Sold individually.
- Requires 8" (20 cm) Alpine Flex Extensions.

Fits: Alpine Flex Plows

715001386

\$94⁹⁹**ALPINE FLEX 8" (20 CM) PLOW EXTENSIONS**

- These conveniently extend your Alpine Flex Plow.

Fits: Fit Alpine Flex Plows

715001385

\$134⁹⁹**ALPINE FLEX WEAR BLADE (STEEL)**

- Long lasting wear blade that provides a sharper cut than the stock wear blade.
- Replaces stock wear blade.

Fits: Alpine Flex Plow 54" (137 cm)

715001704

\$89⁹⁹**Fits: Alpine Flex Plow 60" (152 cm)**

715001476

\$89⁹⁹

- Stock replacement blade that is versatile for general plowing.

Fits: Alpine Flex Plow 54" (137 cm)

705203199

\$89⁹⁹**Fits: Alpine Flex Plow 60" (152 cm)**

705202835

\$89⁹⁹**ALPINE FLEX WEAR BLADE (PLASTIC)**

- Flexible UHMWPE plastic construction won't scratch your driveway.
- Replaces stock wear blade.

Fits: Alpine Flex Plow 54" (137 cm)

715001703

\$134⁹⁹**Fits: Alpine Flex Plow 60" (152 cm)**

715001475

\$134⁹⁹**ALPINE FLEX PLOW RUBBER FLAP**

(Not illustrated)

- Keeps snow away from the driver.
- Minimizes snow flowing over plow.
- Increases snow rolling effect.

Fits: Alpine Flex Plow 60" (152 cm)

715001387

\$59⁹⁹**Fits: Alpine Flex Plow 54" (137 cm)**

715001767

\$59⁹⁹

ALPINE SUPER-DUTY STEEL PLOWS ⁴⁹



OUTLANDER RENEGADE

PLOWS

ALPINE SUPER-DUTY STRAIGHT PLOW

- Super-duty plow blades made from 12-gauge steel.
- Replaceable wear blades.
- Blades swivel left or right, 5 positions.
- Large pin designed for easy blade rotation to eliminate dirt and snow buildup at pivot point.
- Blade design provides best snow/dirt roll-off at any angle.
- Yellow-colored version Can-Am branded.

Fits: G2, G2L, G2S

54" (137 cm)

- When angled, clears 48" (123 cm) path.

715000208 • Black

715000647 • Yellow

\$219⁹⁹

60" (152 cm)

- When angled, clears 53½" (136 cm) path.

715000209 • Black

715000648 • Yellow

\$229⁹⁹



ALPINE SUPER-DUTY ONE WAY STATE PLOW

- One-way "winged" state plow designed to throw snow higher.
- Wing end of plow measures 25" (63 cm) high and tapers down to 16" (41 cm).
- Rubber flap designed to keep snow away from driver.
- Yellow-colored version Can-Am branded.

Fits: G2, G2L, G2S

60" (152 cm)

715000649 • Yellow

715000207 • Black

\$309⁹⁹


66" (168 cm)

715000650 • Yellow

\$349⁹⁹



BUILD YOUR CUSTOM ALPINE SUPER-DUTY STEEL PLOW IN 4 EASY STEPS

1 FIND YOUR PLATFORM	2 MATCH THE PUSH FRAME	3 MATCH THE MOUNTING KIT	4 CHOOSE THE PLOW WIDTH	+ ADD 
G2, G2L	715001064 + 715002858 OR 715001182 + 715001411		66" (168 cm) Alpine Super-Duty One Way State Plow 715000650 · Yellow OR 60" (152 cm) Alpine Super-Duty One Way State Plow 715000649 · Yellow 715000207 · Black OR 60" (152 cm) Alpine Super-Duty Straight Plow 715000648 · Yellow 715000209 · Black OR 54" (137 cm) Alpine Super-Duty Straight Plow 715000647 · Yellow 715000208 · Black	Add Alpine Super-Duty Push Frame Extension (703500603) if using Alpine Super-Duty Steel Plow with Apache 360 and Backcountry Track System.
G2S	715001064 + 715002858 OR 715001474 + 715001411			

PUSH FRAME

ALPINE SUPER-DUTY PUSH FRAME WITH QUICK-ATTACH SYSTEM

- Tubes withstand roughest use.
- Mid-mount carriage provides up to 11½" (29 cm) lift.
- Fits all steel blade styles.
- Improved auto aligning quick-attach system, easy foot lever release pedal, cable saver limit switch preventing cable breakage by automatically stopping the winch.
- Fits on Plow Mounting Kit (715001411 & 715002858) depending on your vehicle platform.
- Refer to the chart above for the fitting.

715001182 • Includes plow roller fairlead
715001474

\$379⁹⁹



ALPINE SUPER-DUTY PUSH FRAME

- Super-duty push tubes withstand the roughest use.
- Mid-mount carriage provides up to 11½" (29 cm) of lift.
- Fits all steel blade styles.
- Quick-attach not included.
- Refer to the chart above for the fitting.

715001064

\$249⁹⁹



MOUNTING KIT

PLOW MOUNTING KIT

(Not illustrated)

- Required to install Alpine Super-Duty Push Frames with Quick-Attach System (715001182, 715001474) and Alpine Flex Push Frames (715001847 and 715001848).
- Mounting plate precision-designed to stay on year round without compromising ground clearance.
- Fits with or without Can-Am Skid Plates.
- Refer to the chart above for the fitting.

715001411

\$104⁹⁹

PLOW MOUNTING KIT

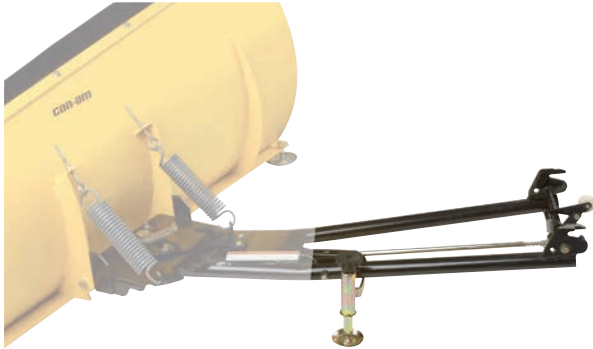
(Not illustrated)

- Required to install Alpine Super-Duty Push Frame (715001064).
- Quick-release pins attach and detach plow blade and base assembly in minutes.
- Simplified installation.
- Can be used with or without Alpine Super-Duty Quick-Attach System (715000731).
- No frame drilling required.
- Refer to the chart above for the fitting.

715002858

\$104⁹⁹

ALPINE SUPER-DUTY ACCESSORIES



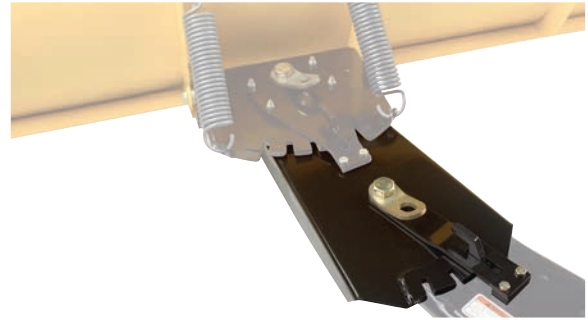
ALPINE SUPER-DUTY QUICK-ATTACH SYSTEM

- Available as an option to upgrade Alpine Super-Duty Push Frame (715001064).
- The plow will be easy to install with this quick-attach system.
- Durable with a powder-coated rust-resistant finish.

Fits: Alpine Super-Duty Plow

715000731

\$174⁹⁹



ALPINE SUPER-DUTY PUSH FRAME EXTENSION

- 12 1/4" (31 cm) chassis extension for use with Apache 360 Track System.
- Increases angle and enables extra blade rotation.
- Fits on Alpine Super-Duty Push Frame (715001063, 715001064, 715001182 and 715001474).

703500603

\$149⁹⁹

ALPINE SUPER-DUTY DRIFT CUTTER

- Helps keep snow in the plow.
- Designed with a rear pivot point.
- Works with both Straight and One Way State Blades.

Fits: Alpine Super-Duty Plow

Left

715000217

\$84⁹⁹

Right

715000218

\$84⁹⁹



ALPINE SUPER-DUTY PULLEY KIT

- Pulley kit to be used in conjunction with the winch when using a snow plow.
- Recommended to increase winch efficiency.
- To be used with the XT Front Bumper.

Fits: Alpine Super-Duty Plow

715000279

\$49⁹⁹



OTHER PLOW ACCESSORIES

ALPINE SYNTHETIC WINCH CABLE

- Specially designed for plowing applications.
- 8' (2.4 m) section of durable, extra-strong synthetic rope.
- Stands up to repeated, sharp angle pulls used to lift heavy plow blades.
- Temporarily replace your winch rope for plow season to save wear and tear on wire rope.

715000540

\$39⁹⁹



PLOW ROLLER FAIRLEAD

- Larger diameter lower roller reduces wear on wire rope for plow application.
- For use with Alpine Super-Duty Plow.

Fits: G2

705005715

\$59⁹⁹



REAR TIRE CHAINS

- Improve your traction in mud and snow.
- Sold in pairs.

26" x 10" x 12"

715500218

\$79⁹⁹

25" x 10" x 12"

715000225

\$79⁹⁹



LET NOTHING STOP YOU.
CUSTOMIZE YOUR OUTLANDER 6X6
& MAKE EVERY RIDE COUNT.

OUTLANDER 6X6

APACHE 360 LT TRACK SYSTEM

- Exclusively for the Outlander 6x6.
- Cross obstacles up to 12" (30 cm) high.
- Enjoy superior acceleration, turning, braking, and side-hilling.
- Switch easily between enhanced attack angle or improved flotation.
- Reliable heavy-duty build.
- Can-Am designed technology.
- Mounting kit included.
- For winter use only.
- EC Compliant.

Fits: G2 (6x6 2016 and up models only)

715002386

\$5,999⁹⁹

Fits: G2 (6x6 2014-2015 models only)

619590299

\$6,049⁹⁹



OUTLANDER 6X6



LOG BARS

- Log bars allow you to convert the cargo bed into a perfect transport space for 4' (120 cm) timber.
- The driver's safety is guaranteed by the protective front screen.

Fits: G2 (6x6 models only)

715002486

\$919⁹⁹

**NEW** DRIVER BACKREST

- Provides the rider's back with that extra support that makes riding that extra mile way more comfortable.
- Adjusts horizontally to match the driver's height and preference.
- Mounts and locks in firmly onto the vehicle.

Fits: G2 (6x6 only)

715003611

\$209⁹⁹



TAILGATE LIMITER KIT

- 2 L-shape brackets that hold the tailgate open horizontally.
- Keeps tailgate flush with the rest of the flatbed for longer oversized cargo.

Fits: G2 (6x6 models only)

715002534

\$59⁹⁹



LinQ
SYSTEM

TAILGATE EXTENSION/DIVIDER

- The sturdy tailgate extension provides a 10" (25 cm) extension to the cargo space.
- Thanks to the longer cargo bed, even large loads pose no problem.
- With the help of LinQ quick locks, the extension also acts as a solid space divider for the cargo bed.

Fits: G2 (6x6 models only)

715002488

\$439⁹⁹



HARD TOP

- The hard top provides a 116 Gal (440L) cargo box.
- Locking secures your belongings.
- The cover raises assisted by gas cylinders.

Fits: G2 (6x6 models only)

715002490

\$849⁹⁹

OUTLANDER 6X6**18 GAL (70L) UTILITY BOX**

- Wherever you go and whatever you do, this handy 18 Gal (70L) utility box is your mobile storage.
- The lid keeps your equipment safe from the elements in all conditions.
- Slides under the flatbed with handles for easy access.

Fits: G2 (6x6 models only)

715002487

\$439⁹⁹

**FLATBED PROTECTION TUBES**

- Bolt-on bumpers for the sides of the 6x6 flatbed.
- Protects the exterior plastic components of the flatbed from rocks, trees and other obstacles when traversing enclosed areas or loading cargo onto the bed.

Fits: G2 (6x6 models only)

715002489

\$409⁹⁹

**REAR WINCH KIT**

- The remote-controlled rear winch is a godsend when you want to pull yourself out of a tough spot or move heavy loads.
- Includes a fully-sealed Warn winch and all wiring and hardware needed for an easy and quick installation.
- Pulling strength capability of 3,000 lb (1,361 kg).
- 50 ft. of 3/16" (15.2 m of 4.8 mm) wire steel cable.

Fits: G2 (6x6 models only)

715002484

\$999⁹⁹

**TARPAULIN**

- Fitted to cover all of the items in your cargo box thoroughly.
- Prevents splash from entering cargo box.
- Easily removable for quick access.

Fits: G2 (6x6 models only)

715002491

\$309⁹⁹

STORAGE COVER

- (Not illustrated)
- For storage use only.
 - Heavy-duty elastic cord around bottom for secure fit.

Fits: G2 (6x6 models only)

715002492

\$259⁹⁹

- 100-denier polyester construction.
- Fits with or without windshield and mirrors.



**ENGINEERED
TO PROTECT
& PRESERVE VEHICLE
FRAME, ENGINE
& DRIVETRAIN.**

FULL BODY SKID PLATE

- A full body plastic skid plate (10 mm HDPE) designed to protect the frame and the engine case from rough terrain conditions.
- The plastic allows your ATV to slide easily over stumps and logs.

Fits: G2 (6x6 models only)

715002485

\$559⁹⁹

ITP TERRACROSS TIRE

- This smooth-riding tire will command every bit of traction from the ground while still managing to float across loose snow, sand and mud.
- Features extreme-duty construction for improved puncture protection, extra-tough rubber compound for increased tread life, and the interlocking tread pattern and wide footprint make it one of the toughest and grippiest radials around.
- Not EC compliant.

Fits: G2 XTP, G2 Limited

Front
26" x 8" x 14"
705401906
\$149⁹⁹

Rear
26" x 10" x 14"
705502421
\$189⁹⁹



**GROUND-GRIPPING TRACTION MEETS LOOSE SNOW, SAND, & MUD
MANEUVERABILITY. THE TOUGH TIRE WITH THE SMOOTH RIDE.**

ZILLA TIRE BY MAXXIS*

- Sold individually.

Front
27" x 10" x 14"
705401302
\$154⁹⁹

Rear
27" x 12" x 14"
705501703
\$194⁹⁹



CARLISLE ACT TIRE

Fits: G2 (500-1000 XT models only)

Front
26" x 8" x 12"
705401333
\$109⁹⁹

705401334 · C€
Rear
26" x 10" x 12"
705501769
\$139⁹⁹
705501770 · C€

Fits: G2 (400 XT models only)

Front
25" x 8" x 12"
705400606
\$119⁹⁹

705400326 · C€
Rear
25" x 11" x 12"
705500933
\$149⁹⁹
705500598 · C€

CARLISLE ACT HD TIRE

Front
26" x 8" x 12"
705401736
\$133⁹⁹

Rear
26" x 10" x 12"
705502297



MAXXIS MUDZILLA TIRE

- Not EC compliant.

Fits: G2 (X mr 570 & 650 models only)

Front
28" x 8" x 12"
705402131
\$214⁹⁹

Rear
28" x 10" x 12"
705502645
\$239⁹⁹



GORILLA SILVERBACK TIRE

- AT30X9-14 Gorilla Silverback mud tire.
- Sold individually.
- Not EC compliant.

Fits: G2 (850 & 1000 models only)

30" x 9" x 14"
705402178
\$259⁹⁹



CARLISLE BADLANDS A/R TIRE

Fits: G2 (500-1000 Base models only)

Front
26" x 8" x 12"
705401331
\$114⁹⁹

705401332 · C€

Rear
26" x 10" x 12"
705501767
\$119⁹⁹

705501768 · C€

**CARLISLE TRAIL WOLF TIRE**

Fits: G2 (400 Base models only)

Front 25" x 8" x 12" Rear 25" x 11" x 12"
705401625 705502164

\$94⁹⁹**\$129⁹⁹**

705400607 ·

705502165 ·

**ITP HOLESHOT ATR TIRE**

Fits: G2S

Front 205/80R12 Rear 270/60R12
25" x 8" x 12" 25" x 10" x 12"
705400600 705500926

\$129⁹⁹**\$144⁹⁹**

705400475 ·

705500820 ·

**DURO THRASHER TIRE**

Fits: DS 90/70

Front - 19" x 7" x 8" Rear - 18" x 9.5" x 8"
V42711DGF000LL V42712DGF010LL

\$69⁹⁹**\$69⁹⁹****KENDA KLAW MXR TIRE**

Fits: DS 90 X

Front - 20" x 6" x 10" Rear - 18" x 10.5" x 8"
V42711DGF01HLL V42712DGF01HLL

\$99⁹⁹**\$109⁹⁹****REAR TIRE CHAINS**

• Improve your traction in mud and snow.
• Sold in pairs.

26" x 10" x 12" 25" x 10" x 12"
715500218 715000225

\$79⁹⁹**\$79⁹⁹****KENDA KNARLY TIRE**

Fits: DS 250

Front - 22" x 7" x 10" Rear - 20" x 11" x 9"
S44710RCA000 S42710RCA000

\$89⁹⁹**\$99⁹⁹**

RIMS

14" RIM

• Premium cast aluminum black painted with machining and clear coat rim.
• Center hole: 72 mm
• Bolt circle pattern: 4/136 mm

Fits: G2 DPS, G2 XT, G2 MAX 650, G2 MAX XT, G2 MAX Limited

Front - 14" x 6.5" offset = 40 mm Rear - 14" x 8.5" offset = 50 mm
705401853 · Black and machined 705502402 · Black and machined

\$119⁹⁹**\$129⁹⁹**

705401852 · Black with clear coat
705401851 · Silver with clear coat

705502401 · Black with clear coat
705502400 · Silver with clear coat

\$109⁹⁹**\$119⁹⁹**

NOTE: Matching Nuts - 250100100 Black, 250100082 Chrome / Matching Cap - 705400928

OUTLANDER X MR AND DEFENDER RIM

- Cast aluminum rim with trend setting explosive styling so you can ride - and look - like a trailblazer.
- Front: 14" x 6.5" offset = 10 mm.

Fits: ATV (X mr models front & rear wheels)

705401848 • Black and machined

705401849 • Black

\$129⁹⁹



NOTE: Matching Nuts - 250100100 Black, 250100082 Chrome / Matching Cap - 705401541

OUTLANDER X MR RIM - ITP-SS212*

- Black with machining and clear coat rim.
- Matching Cap (705400963), Matching Nuts (250100100).
- Sold individually.

Fits: G2 (X mr models only)

Front & Rear - 14" x 6"

705400877 • Black and machined

\$129⁹⁹



OUTLANDER RIM (CAMO MODEL)

- Black with clear coat aluminum rim.

Fits: G2, G2L, G2S

Front - 12" x 6" offset = 41 mm

705401127 • Black with clear coat

\$144⁹⁹

Rear - 12" x 7.5" offset = 51 mm

705501493 • Black with clear coat

\$154⁹⁹



LOCKOUT 393 14" RIM BY VISION*

- Sold individually.
- Matching Cap (705401362), Matching Nuts (250100100).

Front - 14" x 7"

Bolt circle pattern: 4/136 mm

Wheel offset: 4 + 3

705401363

\$99⁹⁹

Rear - 14" x 8"

Bolt circle pattern: 4/136 mm

Wheel offset: 4 + 4

705501787

\$99⁹⁹



12" BEADLOCK RIM

- Black with clear coat aluminum rim.
- Needs 16 bolts (250000435) for installing the Beadlock.
- Choice of Beadlock color (not included).

Fits: G2, G2L, G2S

Front - 12" x 6" offset = 41 mm

705401678 • Black

\$194⁹⁹

Rear - 12" x 7.5" offset = 51 mm

705502244 • Black

\$195⁹⁹



12" BEADLOCK

- Cast aluminum beadlock.
- Must be installed on Front Rim (705401678) and Rear Rim (705502244).

Fits: G2, G2L, G2S

705401763 • Can-Am Red

705401156 • Yellow

705401533 • Orange Crush

705401812 • Manta Green

\$69⁹⁹

NOTE: Matching Nuts - 250100100 / Matching Cap 705400928

14" BEADLOCK RIM

- Black with clear coat aluminum rim.
- Choice of beadlock color (not included).
- Needs 16 bolts (250000435) for installing the beadlock.

Fits: G2

Front - 14" x 6.5" offset = 41 mm

705401594

\$229⁹⁹

Rear - 14" x 8" offset = 51 mm

705502146

\$229⁹⁹



14" BEADLOCK

- Cast aluminum beadlock.
- Must be installed on Front Rim (705401594) and Rear Rim (705502146).

Fits: G2

705401586 • Manta Green

705401702 • Octane Blue

705401837 • Can-Am Red

705401840 • Black

\$74⁹⁹

NOTE: Matching Nuts - 250100100 / Matching Cap 705400928



**CAN-AM
SPORTSWEAR
& JERSEYS**
P.67-69



Kappa
**ATTITUDE
+ ACTION
COLLECTION**
P.55

**PERFORMANCE STYLED
CROSS HELMETS & GOGGLES**
P.70-72

GO FAS RACING TEAM POLO

- Short sleeve polo.
 - Embroidered sponsor patches.
 - Can-Am logos on front and back.
 - Red numbering on left sleeve.
 - Red numbering on back.
- 100% Polyester

MEN'S

286634
S, M, L, XL,
2XL, 3XL
White (01),
Yellow (10),
Black (90)

\$34⁹⁹



GO FAS RACING TEAM GEAR

LADIES'

• Feminine cut.
286635
XS, S, M, L,
XL, 2XL
White (01)

\$34⁹⁹



GO FAS RACING TEAM HOODIE

- Full-zip hooded fleece with long sleeves.
 - Can-Am logos on front and back.
 - Embroidered sponsor patches.
 - Red numbering on left sleeve.
- 60% Cotton, 40% Polyester

MEN'S

286638
S, M, L, XL,
2XL, 3XL
Black (90)

\$64⁹⁹



LADIES'

286639
XS, S, M, L,
XL, 2XL
White (01)

\$64⁹⁹



**KAPPA, CAN-AM AND GO FAS CREATED
WITH PERFORMANCE IN MIND.**

GO FAS RACING TEAM TECHNICIAN SHIRT

- Short sleeve shirt.
 - Red numbering on left sleeve.
 - Embroidered sponsor patches.
 - Chest pocket.
 - Can-Am logos on front and back.
- 58% Cotton, 38% Polyester, 4% Elastane

286636
S, M, L, XL, 2XL
Black (90)

\$49⁹⁹



GO FAS RACING TEAM JACKET

- Mix of embroidered and printed sponsor patches.
 - Can-Am logos on front and back.
 - Red numbering on left sleeve.
- 58% Cotton, 38% Polyester, 4% Elastane

286640
S, M, L, XL,
2XL, 3XL
Black (90)

\$79⁹⁹



GO FAS RACING TEAM CAP

- Can-Am logo on front.
 - Embroidered sponsor patches.
 - Kappa logo on side.
 - Red numbering on peak.
- 100% Polyester

286641 • One size • Yellow (10), Black (90)

\$19⁹⁹

GO FAS RACING TEAM GEAR

CATCH THE
VIDEO

CAN-AMOFFROAD.COM



Kappa

GO FAS RACING TEAM JERSEY

- Long sleeve jersey with mesh inserts.
- Embroidered sponsor patches.
- Can-Am logo on front.
- Kappa logo on sleeves.

100% Polyester

286637

S, M, L, XL, 2XL, 3XL

Yellow (10), Green (70), Blue (80)

\$49⁹⁹GO FAS RACING
TEAM T-SHIRT

- Short sleeve t-shirt.
- Embroidered sponsor patches.
- Can-Am logos on front and back.
- Red numbering on left sleeve and back.

100% Cotton

286632

S, M, L, XL, 2XL, 3XL

Yellow (10), Black (90)

\$24⁹⁹LADIES'
GO FAS RACING
TEAM T-SHIRT

- Short sleeve t-shirt.
- Feminine cut.
- Can-Am logo on front.
- Red numbering on sleeve and front.

100% Cotton

286633

XS, S, M, L, XL, 2XL

Yellow (10), Black (90)

\$24⁹⁹

KAPPA KOMBAT TECHNICAL GEAR



KAPPA KOMBAT TECHNICAL JERSEY

- Printed graphics and mesh inserts.

- Kappa logo on front.

100% Polyester

**MEN'S
LONG SLEEVE**286666
S, M, L, XL,
2XL, 3XL
Blue (80)**\$49⁹⁹****MEN'S
SHORT SLEEVE**286667
S, M, L, XL,
2XL, 3XL
Blue (80)**\$44⁹⁹****MEN'S
SLEEVELESS**286668
S, M, L, XL,
2XL, 3XL
Blue (80)**\$39⁹⁹****LADIES'
LONG SLEEVE**

- Feminine cut.

286655
XS, S, M, L,
XL, 2XL
White (01)**\$49⁹⁹****LADIES'
SHORT SLEEVE**

- Feminine cut.

286669
XS, S, M, L,
XL, 2XL, 3XL
White (01)**\$44⁹⁹****LADIES'
SLEEVELESS**

- Feminine cut.

286670
XS, S, M, L,
XL, 2XL, 3XL
Black (90)**\$39⁹⁹**

KAPPA KOMBAT TECHNICAL GEAR



CAN-AM LONG SLEEVE JERSEY

- Printed graphics and mesh inserts.
 - Can-Am logo on front and on sleeves.
- 100% Polyester

MEN'S

454050
S, M, L, XL,
2XL, 3XL
White (01)

\$49⁹⁹



LADIES'

454051
XS, S, M,
L, XL, 2XL
Pink (36)

\$49⁹⁹



CAN-AM TRIPLE BLACK LONG SLEEVE JERSEY

- Printed graphics and mesh inserts.
 - Can-Am logo on front and on sleeves.
- 100% Polyester

454052
S, M, L, XL, 2XL
Black (90)

\$49⁹⁹



KAPPA KOMBAT LONG SLEEVE JERSEY

- Printed graphics and mesh inserts.
 - Kappa logo on front and on sleeves.
 - Kombat logo on back.
- 100% Polyester

KAPPA KOMBAT
DUAL

454049
S, M, L, XL,
2XL, 3XL
Blue (80)

\$49⁹⁹

KAPPA KOMBAT
ACTIVE

454046
S, M, L, XL,
2XL, 3XL
Red (30)

\$49⁹⁹

KAPPA KOMBAT
STEALTH

454048
S, M, L, XL,
2XL, 3XL
Black (90)

\$49⁹⁹



KAPPA KOMBAT TECHNICAL JERSEYS

- Printed graphics and mesh inserts.
- Kappa logo on front.

100% Polyester

KAPPA KOMBAT TECHNICAL GEAR



LONG SLEEVE

286652
S, M, L, XL, 2XL, 3XL - Yellow (10), Green (70)

\$49⁹⁹



SHORT SLEEVE

286653
S, M, L, XL, 2XL, 3XL - Yellow (10), Green (70)

\$44⁹⁹



SLEEVELESS

286654
S, M, L, XL, 2XL, 3XL - Yellow (10), Green (70)

\$39⁹⁹

KAPPA KOMBAT TECHNICAL COMPRESSION SHIRT

- Compression shirt with mesh inserts.
- Kappa and Kombat logos.

95% Polyester 5% Spandex



LONG SLEEVE

286643
S, M, L, XL, 2XL, 3XL - Black (90)

\$49⁹⁹



SHORT SLEEVE

286644
S, M, L, XL, 2XL, 3XL - Black (90)

\$39⁹⁹

KAPPA KOMBAT TECHNICAL WATERPROOF JACKET

- Waterproof jacket.
- Kappa logo on right shoulder and right sleeve.
- Kombat logo on left side.



MEN'S

96% Polyester, 4% Spandex
286656 - S, M, L, XL, 2XL, 3XL - Black (90))

\$79⁹⁹



LADIES'

• Feminine cut.
100% Polyester
286657 - XS, S, M, L, XL, 2XL - Black (90)

\$79⁹⁹

KAPPA KOMBAT TECHNICAL JACKET

- Water-resistant jacket with mesh inserts.
- Kappa logo on right shoulder and on both sleeves.
- Kombat logo on left side.

100% Polyester



MEN'S

286658
S, M, L, XL, 2XL, 3XL
Black (90)

\$69⁹⁹



LADIES'

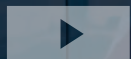
• Feminine cut.
286659
XS, S, M, L, XL, 2XL
Grey (09), Pink (36)

\$69⁹⁹





**CATCH THE
VIDEO**



CAN-AMOFFROAD.COM

Kappa

POLO

- Short sleeve polo.
- Can-Am logo on left chest.
- Kappa logo on right shoulder.

100% Cotton

286663

S, M, L, XL, 2XL, 3XL

Red (30), Blue (80)

\$34⁹⁹



**KAPPA LOGO
ON RIGHT
SHOULDER**

CAN-AM GEAR BY KAPPA



LONG SLEEVE TEE

- Long sleeve t-shirt.
- Can-Am logo.
- Kappa logo on the back of the neckline and on left sleeve.

100% Cotton

286661 · S, M, L, XL, 2XL, 3XL · Yellow (10), Red (30), Black (90)

\$34⁹⁹

LONG SLEEVE TEE

- Long sleeve t-shirt.
- Feminine cut.
- Can-Am logo on front at neckline.
- Kappa logo on upper back.

100% Cotton

286662 · XS, S, M, L, XL, 2XL · White (01), Grey (09)

\$34⁹⁹

HOODIE

- Full-zip hoodie fleece.
- Printed graphics.
- Kappa logo on shoulder.

60% Cotton,
40% Polyester

MEN'S

- Can-Am logo on front.

286664 · S, M, L, XL, 2XL, 3XL · Grey (09), Blue (80)

\$64⁹⁹

LADIES'

- Feminine cut.

- Can-Am logo on right sleeve.

286665 · XS, S, M, L, XL, 2XL · Grey (09), Purple (40)

\$64⁹⁹

KAPPA CASUAL WEAR

POLO

- Short sleeve polo.
- Kappa logo on right shoulder.

100% Cotton



MEN'S

286645 · S, M, L, XL, 2XL, 3XL · Grey (09), Blue (80)

\$34⁹⁹

LADIES'

- Feminine cut.

286646 · XS, S, M, L, XL, 2XL · White (01), Red (30)

\$34⁹⁹

KAPPA CASUAL WEAR
HOODIE

- Full-zip hoodie.
 - Kappa logo on left chest and on right sleeve.
- 60% Cotton,
40% Polyester


MEN'S

286647 · S, M, L, XL, 2XL, 3XL · Yellow (10), Green (70)

\$64⁹⁹
LADIES'

286648 · XS, S, M, L, XL, 2XL · White (01), Black (90)

\$64⁹⁹
ZIP UP TOP

- Full-zip top with mesh inserts.
 - Kappa logo on left side of chest.
- 60% Cotton,
40% Polyester

286642
XS, S, M, L, XL, 2XL
Black (90)

\$44⁹⁹

SPORT PANTS

- Sport pants with mesh inserts.
 - Kappa logo on right thigh.
- 60% Cotton,
40% Polyester

286671
XS, S, M, L, XL, 2XL
Black (90)

\$34⁹⁹

MEN'S KAPPA SPORT SHOES

- Laced training shoes.
- Soft and ultralight removable PU foam insock.
- Phylon outsole with non-slip rubber inserts.
- Kappa logo.

286660 · 8, 9, 10, 10.5, 11 · Black (90)

\$99⁹⁹
FLEECE

- Full-zip fleece.
 - Wicking fabric.
 - Zipped pocket on left chest.
 - Can-Am logo on chest.
 - Kappa logo on left shoulder.
- 60% Cotton,
40% Polyester


MEN'S

286649 · S, M, L, XL, 2XL, 3XL · Black (90)

\$59⁹⁹

LADIES'

• Feminine cut.

286650 · XS, S, M, L, XL, 2XL · White (01)

\$59⁹⁹

SHORT

- Shorts with Kappa logo on left thigh and on right upper back.
- Two back pockets.

97% Cotton, 3% Elastane

286651 · S, M, L, XL, 2XL, 3XL · Black (90)

\$49⁹⁹



**HOODIES ARE FOREVER.
GEAR UP FOR LIFE WITH CAN-AM.**

NEW ZIPPED HOODIE

- Full-zip hooded sweatshirt.
- Ribbed waistband and cuffs.
- Can-Am print on hood with contrasting hood cords.
- Screen printed logos.

60% Cotton, 40% Polyester

286690

S, M, L, XL, 2XL, 3XL
Brick (33), Black (90)

\$74⁹⁹



NEW IMPULSE HOODIE

- Ribbed waistband and cuffs.
- Contrasting inner hood.
- Kangaroo front pocket.
- Screen printed logos.

60% Cotton, 40% Polyester

286689

S, M, L, XL, 2XL, 3XL
Khaki (05), Blue (80)

\$69⁹⁹



TECHNICIAN SHIRT

- Large X-Team embroidery at upper back.
- Pleat at back center for ease of movement.
- Chest pocket.

65% Polyester, 35% Cotton

286566 • S, M, L, XL,

2XL, 3XL

Charcoal Grey (07),

Black (90)

\$64⁹⁹



ORIGINAL TEE

100% Cotton

286402 • S, M, L, XL, 2XL, 3XL • Heather Grey (27), Ice (38), Black (90)

\$24⁹⁹



NEW MAVERICK TEE

100% Cotton

454057 • S, M, L, XL, 2XL, 3XL • Sand (03), Blue (80)

\$24⁹⁹

X-TEAM TEE

- Print at sleeve and front.

100% Cotton

286618

S, M, L, XL, 2XL, 3XL

White (01), Black (90)

\$29⁹⁹



LADIES' X-TEAM TEE

- V-neck.

95% Cotton, 5% Spandex

286567

XS, S, M, L, XL

White (01) (01), Black (90)

\$29⁹⁹



NEW CLASSIC CAP

- Ultra comfortable, stretch, lightweight fabric.
- Metal adjuster with BRP logo.

55% Cotton, 45% Polyester

286675

One size

Orange (12), Black (90)

\$19⁹⁹



NEW MAVERICK CAP

- Plastic strap adjuster at back.
- Embroidered logo.

447354

One size

Khaki (05), Black (90)

\$24⁹⁹





X-RACE JERSEY

- Ultralight, quick-dry, antibacterial and moisture-wicking fabric.
- Mesh fabric for maximum breathability.
- Extended back for coverage while riding.
- Non-fading sublimated graphics.
- Rib cuffs.

100% Polyester

286614 • S, M, L, XL, 2XL, 3XL • Orange (12), Blue (80)

\$49⁹⁹



TEAM JERSEY

- Quick-dry, antibacterial moisture-wicking fabric.
- Extended back for coverage while riding.
- Non-fading sublimated graphics.
- Rib cuffs.

100% Polyester

286553 • S, M, L, XL, 2XL, 3XL • Khaki (05), Yellow (10)

\$44⁹⁹



LADIES' TEAM JERSEY

- Semi-fitted lady's cut.
- Quick-dry, antibacterial, moisture-wicking fabric for maximum comfort.
- Mesh fabric for extra ventilation underarms and side seam.
- Rib cuff.

90% Polyester, 10% Spandex

286616 • XS, S, M, L, XL, 2XL • Pink (36), Teal (74)

\$44⁹⁹



MUD GEAR

NEW MUD JACKET

- 100% waterproof PVC.
- Electronically-welded seams.
- Underarm and rear vent panels.
- 2 hand pockets.
- Elastic cuffs.
- Drawstring hood and hem.

286676

S, M, L, XL, 2XL
Clear (00),
Matte Black (93)

\$29⁹⁹



MUD PANTS

- Oversized pants made of 100% waterproof PVC.
- Electronically-welded seams.
- Strategically placed ventilation.
- Side openings at bottom leg.

Polyvinyl Chloride (PVC)

286128

S, M, L, XL, 2XL
Clear (00),
Matte Black (93)

\$14⁹⁹



XP-R2

ULTRA LIGHTWEIGHT AND STRONG MULTI-DIRECTIONAL CARBON FIBER CONSTRUCTION WITH PREMIUM STYLE AND DETAILS.

XP-R2 CARBON LIGHT BLAZE HELMET

Shell: Carbon Fiber Composite

447657

XS, S, M, L, XL, 2XL, 3XL
Orange (12)

\$424⁹⁹

DOT ECE22.05



XP-R2 CARBON LIGHT HELMET

Shell: Carbon Fiber Composite

447656

XS, S, M, L, XL, 2XL, 3XL
Black (90)

\$399⁹⁹

DOT ECE22.05



XP-R2 MORPHO KIT

- For a perfect custom fit.
- Left and right pads included.

447754 • XS, S, M, L, XL, 2XL, 3XL • Clear (00)

\$14⁹⁹



ENDURO

DESIGNED FOR LONG RIDES AND HIGH ADVENTURE.

NEW CAN-AM EX-2 ENDURO HELMET

Shell: Polycarbonate Composite

448466

XS, S, M, L, XL, 2XL
Black with graphics (94)

\$199⁹⁹

DOT ECE22.05



XP-3

SUPERLIGHT CROSS-STYLE HELMET: FEATURE-PACKED FOR EXCEPTIONAL PERFORMANCE, PROTECTION AND COMFORT.

XP-3 X-RACE HELMET

- Durable multi-colored clear-coated graphics.

Shell: Fiberglass

448395

XS, S, M, L, XL, 2XL
Orange (12), Blue (80)

\$239⁹⁹

DOT Snell ECE22.05



XP-3 HELMET

Shell: Fiberglass

448253

XS, S, M, L, XL, 2XL
Matte Black (93)

\$229⁹⁹

DOT Snell



XC-4

PREMIUM LOOK & STYLE.

**XC-4 MODERN HERITAGE
HELMET**

Shell: Polycarbonate Composite

448251

XS, S, M, L, XL, 2XL

White (01), Grey (09)

DOT Snell

\$149⁹⁹

ECE VERSION

(Not available in NA)

448340

XS, S, M, L, XL, 2XL

White (01)

ECE22.05

**LADIES' XC-4 HELMET**

Shell: Polycarbonate Composite

448397

XS, S, M, L, XL, 2XL

Pink (36)

\$159⁹⁹

DOT ECE22.05

**XC-4 HELMET**

Shell: Polycarbonate Composite

448255

XS, S, M, L, XL, 2XL

Black (90)

\$139⁹⁹

DOT Snell

**DUST MASKS**

- Easily replaceable filters remove 99.9% of airborne dust, particles, pollen and odors.
- Made from soft yet durable neoprene material that fits snugly under helmets and goggles.
- XS/S fits most kids 12 and under, M/L fits most riders and XL/2XL fits larger frames (235+ lbs).
- Includes 2 replacement filters and a small storing pouch.

**CAN-AM ORIGIN
DUST MASK**

447833

XS/S, M/L, XL/2XL

Black (90)

\$29⁹⁹**CAN-AM VENTED
DUST MASK**

448246

XS/S, M/L, XL/2XL

Grey (09)

\$32⁹⁹**COMMUNICATION SYSTEM****SENA 20S BLUETOOTH COMM SYSTEM**

- Super-versatile, water-resistant multi-function Bluetooth communication, navigation and music system designed for outdoor and vehicle sound environment use.
- Driver-to-passenger and driver-to-driver communication at a range over 1.2 miles (2 km).
- Up to 12-hour talk and 10-day stand-by time on a single charge – permits simultaneous charge and play.
- 4-way conference, smartphone, intercom-to-phone connection, GPS and MP3 music playback via AVRCP operation, or easy-adjust manual operation with exclusive Jog Dial.
- Bluetooth technology allows for seamless connection with stereo headset, MP3 players, and smartphones.
- Voice-prompt feedback, clear and natural sound quality, individual volume control for each audio source, fully-integrated audio booster delivers optimal sound level – fully firmware-upgradable.
- Complete with integrated microphone, wired microphone, wired boom microphone, speakers, plus MP3, earbud, and GPS ports.

Single Pack

448207 · One size

Black (90)

\$299⁹⁹**Dual Pack**

448208 · One size

Black (90)

\$549⁹⁹

GOGGLES

NEW CAN-AM
RACE SAND GOGGLES
BY SCOTT

- Integrated custom painted frame and strap graphics.
- No Fog¹ anti-fog lens treatment.
- 100% UV protected grey Lexan[®] lens.
- Dust catcher vent foam.
- Multi-layer face foam.
- Durable anti-slip strap.
- Tear-off and roll-off compatible (sold separately).

448491
One size
Black (90)

\$74⁹⁹

CAN-AM TRAIL
GOGGLES
BY SCOTT

- 100% UV protected clear Lexan lens.
- Hypoallergenic super-soft face foam.
- Durable anti-slip strap.
- Tear-off and roll-off compatible (sold separately).

447899
One size
White (01), Yellow (10),
Black (90)

\$34⁹⁹



JUNIOR

NEW JUNIOR X CROSS CRUSH HELMET

- High-tech, lightweight and tough.
- Fully-adjustable aero-tuned peak.
- Moisture-wicking and breathable chin strap, liner and cheek pads.
- Ventilation system.
- Easily removable and washable liner and cheek pads.
- Provides maximum visibility.
- Fits all goggles.
- Strap grip to hold goggles strap in place.
- D.O.T. and EC certified.
- Breath deflector mask included.
- Available with clear-coated bold waterslide graphics.

ABS

448506 • S, M, L • Black with graphics (94)

\$99⁹⁹

DOT ECE22.05



GLOVES

X-RACE GLOVES

- Air mesh panels and perforated palm for ventilation and mobility.
- Double Clarino[®] layer at palm and thumb for extra durability and comfort.
- Knuckle gussets for better mobility.
- Pre-curved design.
- Silicone at fingertips for added grip and control.
- Direct-injection details on back hand.
- Hook-and-loop wrist closure system to keep glove in place.

MEN'S

Air Mesh, Spandex, Clarino

286561

S, M, L, XL, 2XL

Charcoal Grey (07), Blue (80)

\$44⁹⁹

LADIES

35% Synthetic Leather, 30% Polyester,
15% Lycra, 10% Nylon, 10% Neoprene

286617

S, M, L, XL, 2XL

White (01), Pink (36)

\$34⁹⁹



TEAM GLOVES

- Spandex construction for flexibility.
- Chamude palm.
- Pre-curved design.
- Non-fading sublimated graphics.
- Easy slip-on/slip-off convenience.

Shell: Spandex,
Chamude, Polyester

286554

S, M, L, XL, 2XL, 3XL

Charcoal Grey (07)

\$26⁹⁹

RANCH HEAVY
DUTY GLOVES

- Full leather gloves.
- Durable double-layer sueded palm.
- Elastic wrist for slip-on/slip-off convenience.

100% Cow Leather

286563

S, M, L, XL, 2XL, 3XL

Beige (02)

\$19⁹⁹

**NEW** CAN-AM JUNIOR
TRAIL GOGGLES BY SCOTT

- Integrated custom painted frame and strap graphics.
- No Fog¹ anti-fog lens treatment.
- 100% Plastic UV protected clear Lexan[®] lens.
- Multi-layer face foam.
- Durable anti-slip strap.

448512
One size
Black (90)

\$34⁹⁹



BAGS



NEW CAN-AM SLAYER GEAR BAG BY OGIO

- Large main compartment with easy access to all gear.
- Large separated boot pocket.
- Zippered accessory pocket.
- Easy grab handles for transport.
- Detachable shoulder strap.
- Heavy-duty reinforced base
- Dimensions: 32" H x 16" W x 18" D (81 cm x 41 cm x 46 cm)

469294 • One size • Black (90)

\$99⁹⁹



NEW CAN-AM URBAN BACKPACK BY OGIO

- Airport security friendly protective laptop compartment.
- Padded iPad™/tablet/e-reader pocket.
- Dual side water bottle/accessory holders.
- Fully adjustable ergonomic shoulder straps.
- Front pocket with two padded accessory compartments and slip pocket.
- Dimensions: 19.5" H x 13.5" W x 9.5" D (50 cm x 34 cm x 24 cm).

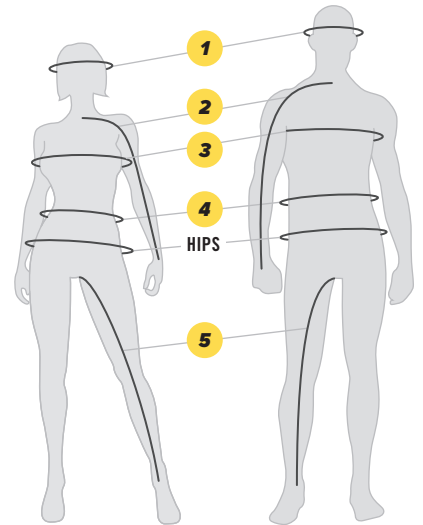
469293 • One size • Black (90)

\$84⁹⁹

HOW TO MEASURE

- For best results, have someone else take measurements.
- Measure body in underwear.
- Tape must be snug but not tight.
- If measurements fall between two sizes, order the larger size.

1 HEAD	Around your head, from the center of the forehead, above the ears and over the natural bump at the back of the head.
2 ARM LENGTH	Let the hands hang down on the side in a slightly bent position. Measure from the center of the back of your neck, along the length of your arm, to the wrist.
3 CHEST/BUST	Measure under your arms, around the fullest part of your chest.
4 WAIST	Measure around your natural waistline, keeping one finger between the tape and body.
5 INSEAM	Without shoes, from crotch to the floor.
GLOVES	Measure palm width.



WHAT CODE REPRESENTS YOUR SIZE?

1. Find your size.
2. The corresponding code is **THE CODE** you use to complete the part number on your order.
Example: 440227__90 Size: M = Code "06", therefore 4402270690

SIZE	CODE	SIZE	CODE	SIZE	CODE	SIZE	CODE	SIZE	CODE	SIZE	CODE
One Size	00	XL	12	L/XL	73	11/12	56	10	30	32	38
XS	02	XLT	13	2	21	13/14	80	10.5	99	34	39
XS/S	90	2XL	14	3/4	79	14/16	50	11	31	36	40
S	04	3XL	16	5/6	52	4	23	12	32	38	41
M	06	4XL	18	6/8	48	6	25	13	33	40	42
MT	07	5XL	88	7/8	54	7	27	14	34	42	43
L	09	S/M	72	9/10	55	8	28	28	36	44	44
LT	10	M/L	91	10/12	49	9	29	30	37		

MEN'S - 5'8" - 6'0" BODY MEASUREMENTS

	S	M	L	XL	2XL	3XL
CHEST	35-37	37-40	40-44	44-48	48-52	52-56
WAIST	29-31	31-34	34-38	38-42	42-46	46-50
HIPS	35-37	37-40	40-44	44-48	48-52	52-56
ARM LENGTH	31	32	33	34	35	35
INSEAM	31 1/2	32	32	32	32	32 1/2

LADIES' - 5'4" - 5'8"

	XS	S	M	L	XL	2XL	3XL
CHEST	32-34	34-36	36-39	39-42	42-45	45-49	49-53
WAIST	24-26	26-28	28-30	30-34	34-37	37-41	41-45
HIPS	34-36	36-38	38-40	40-44	44-47	47-51	51-55
ARM LENGTH	31	31	31 1/2	32	32 1/2	33	34
INSEAM	30	30	30	30	30	30 1/2	30 1/2

MEN'S GLOVES (MEASURE PALM WIDTH)

	S	M	L	XL	2XL	3XL
INCHES	3	3 3/8	3 3/4	4 1/8	4 1/2	5 1/2

LADIES' GLOVES (MEASURE PALM WIDTH)

	S	M	L	XL	2XL
INCHES	2 5/8	3	3 1/4	3 1/2	4 1/2

HELMETS

	XS	S	S/M	M	M/L	L	XL	2XL	3XL
HAT SIZE	6 3/8 - 6 3/4	6 7/8 - 7	7 1/8	7 1/8 - 7 1/4	7 1/4	7 3/8 - 7 1/2	7 3/8 - 7 3/4	7 7/8 - 8	8 1/8 - 8 1/4
HEAD (INCHES)	20 7/8 - 21 1/4	21 5/8 - 22	22 3/8	22 3/8 - 22 3/4	22 3/4	23 1/8 - 23 5/8	24 - 24 3/8	24 3/4 - 25 1/8	25 1/2 - 25 7/8

JUNIOR HELMETS

	S	M	L
HAT SIZE	6 1/8 - 6 1/4	6 3/8 - 6 1/2	6 3/8 - 6 3/4
HEAD (INCHES)	19 1/4 - 19 3/4	20 - 20 1/2	20 7/8 - 21 1/4

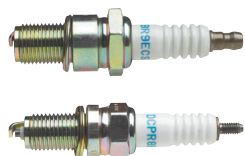
GENUINE BRP PARTS:

THE RIGHT WAY TO PROTECT YOUR INVESTMENT.



GENUINE MAINTENANCE PARTS

ENGINEERED TO DELIVER OPTIMUM PERFORMANCE AND EXTEND ENGINE LIFE ACROSS A WIDE RANGE OF OPERATING CONDITIONS.



NGK SPARK PLUGS

• Ask your authorized Can-Am dealer which one fits your vehicle.

FUEL FILTER

(Not illustrated)

709000330 • Fits ATV 2011 and up

\$5⁹⁹



OIL FILTER

420256188 • Fits all

420256455 • Fits DS450

\$14⁹⁹

COMPLETE OIL
CHANGE KIT
ALSO AVAILABLE.
(SEE PAGE 77)

O-RING (DRAIN PLUG)

(Not illustrated)

420552280

\$3⁹⁹

O-RING (OIL FILTER COVER)

(Not illustrated)

420230920

\$4⁹⁹



AIR FILTERS

- Prevent airborne contaminants from reaching your engine.
- Protect internal components against premature wear.
- Genuine BRP air filters ensure absolute compatibility and a perfect fit.
- Ask your authorized Can-Am dealer which one fits your vehicle.

OIL & MAINTENANCE PRODUCTS AT PAGE 77

DID YOU KNOW?
1 YEAR LIMITED
WARRANTY ON
BRP REPLACEMENT
GENUINE PARTS



LEARN MORE
ON PAGE 76

PREMIUM DRIVE BELT

- High-performance design ideal for off-road use.
- BRP-specific calibration adjusted to best suit your Can-Am vehicle.
- Ask your authorized Can-Am dealer which one fits your vehicle.

422280360

715900024

\$139⁹⁹

\$59⁹⁹

PERFORMANCE DRIVE BELT (100% PBO)

- High-performance belt technology designed for Side-by-side usage, but compatible on ATV for the most enthusiast drivers.
- 100% cutting-edge PBO high-tensile strength polymer fiber construction.
- Designed for high-temperature robustness and prolonged durability.

422280364

\$169⁹⁹

PULLER/LOCKING TOOL / DRIVEN ADAPTOR

(Not illustrated)

- Spreads the secondary clutch open for easy belt replacement.
- Locks engine at TDC for maintenance tasks.

529036098

\$18⁹⁹

CVT GASKET COVER

(Not illustrated)

**G2 (Outlander MAX
& Renegade)**

420430126

\$29⁹⁹

**G2L (Outlander &
Outlander MAX 450)**

420630292

\$24⁹⁹

**G1 (Outlander &
Outlander MAX 400)**

420630290

\$24⁹⁹

PRESERVE THE VALUE OF YOUR VEHICLE WITH REPLACEMENT PARTS YOU CAN RELY ON. ENGINEERED WITH HIGH PRECISION & TOLERANCES, NOTHING FITS A BRP VEHICLE BETTER THAN BRP GENUINE PARTS.



METALLIC BRAKE PAD KIT

- Built strong to last long – heavy-duty construction stands up to hard braking.
- Designed to handle demanding riding conditions with challenging braking environments such as mud and sand.
- Created specifically for use with Can-Am ATV.

Fits: G2 2013 & up (except with 400 engine), G2 2012 with 800R or 1000 engine (except MAX models), G2L 2015 & up, G2S 2012 & up (except G2S 2012 with 500 engine)

Front Left
715900248

Front and
Rear Right
715900249

ORGANIC BRAKE PAD KIT

- Chosen as the standard OEM on Can-Am ATV for dry conditions.
- Provides excellent braking capacity with optimal efficiency, a great feel, and low noise.

Fits: G2 2013 & up (except with 400 engine), G2 2012 with 800R or 1000 engine (except MAX models), G2L 2015 & up, G2S 2012 & up (except G2S 2012 with 500 engine)

Front Left
705601015

Front and
Rear Right
705601014



YUASA[†] BATTERIES

- Top of the line models from the leading preferred original equipment battery supplier in North America.

18 Amps. Wet • (YTX20L-BS) • 410301203

\$115⁹⁹

19 Amps. Dry • (YB16CL-B) • 278001756

\$76⁹⁹

13 Amps. Wet • (YTX15L-BS) • 710000283

\$120⁹⁹



MOTOCROSS[†] BATTERIES

- Complete line-up of economical and high-performance batteries.
- These 22 batteries cover more than 75% of the powersports market and meet Powersport Original Equipment Specifications.
- Ask your authorized Can-Am dealer which one fits your vehicle.

Renegade & Outlander 2004-2012

18 Amps. (YTX20L-BS) • 715900189

\$92⁹⁹

Traxter & Quest 1999-2005

19 Amps. (YB16CL-B) • 715900191

\$66⁹⁹



TOUCH-UP PEN

- Ideal for do-it-yourself small paint repairs caused by rock chips and scratches on your bumpers, roll cage, a-arms, springs, beadlocks, etc.
- Genuine Can-Am color perfectly matches original paint for seamless coverage.
- For use on metal parts only.

529036363 • Can-Am Red
529036362 • Manta Green

529000084 • Octane Blue
529000095 • Sunburst Yellow

\$17⁹⁹

CV BOOT KITS

- Come with clamps and grease.
- Genuine BRP CV Boot Kits ensure absolute compatibility and a perfect fit.
- Ask your authorized Can-Am dealer which one fits your vehicle.



PREMIUM HALF SHAFT

- Premium quality design ideal for off-road use.
- Includes CVs, Shaft and Boots with the best suited geometry for your Can-Am vehicle.
- Ask your authorized Can-Am dealer which one fits your vehicle.

\$199⁹⁹

NEW PRICE

PERFORMANCE HALF SHAFT

- High-performance design ideal for off-road use with superior protection in mud riding.
- Includes CVs, shaft and Boots with the best suited geometry for your Can-Am vehicle.
- Ask your authorized Can-Am dealer which one fits your vehicle.

\$239⁹⁹

NEW PRICE



CHOOSING THE RIGHT ONE CAN IMPACT POWER & PERFORMANCE.

A drive belt is the essential link between engine & drivetrain, so there's no overstating its importance for obtaining maximum power & efficiency. If your drive belt can't reach & maintain performance, then no amount fine-tuning or performance customization will make a difference.

Clutches & gears are calibrated for optimum ride-specific performance, so it only makes sense to use a specialized ride-specific drive belt too.

Our engineers always consider the heat generation & load conditions created by different riding styles. For example, the Maverick X3 produces higher drivetrain loads at hard throttle through dunes and requires a stiffer drive belt with high heat resistance. But a heavily loaded utility vehicle can also encounter high drivetrain loads. However, the clutch calibration, engine, RPM, velocity, and work environment differ significantly necessitating a drive belt optimized for those conditions. That's why it's so important to choose the right drive belt.

Always make sure you match any replacement drive belt to the requirements of your BRP vehicle's make & year of manufacture. While third-party and BRP drive belts are identical in size & shape, ours were designed to deliver the highest levels of performance & longevity based upon your vehicle's specific end-use and calibration.

WHAT MAKES OUR BELT STAND OUT?

One essential material stands among our drive belt components; aramid. Aramid, commonly used in the manufacture of drive belts, is a heat and abrasion resistant man-made fiber that improves the strength & durability of rubber.

- Top cog with special aramid fiber
- Adhesion rubber
- Specialized high-modulus aramid cord
- Compressive rubber with high-modulus PBO fiber
- Bottom cog with aramid fabric

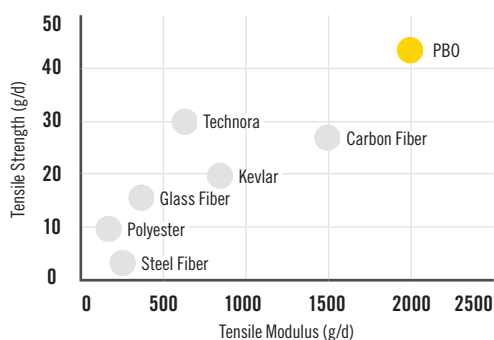
BRP BELT CONSTRUCTION VS. COMPETITORS

MATERIALS	BRAND A	BRAND A C12	BRAND B	BRP
Top Rubber Chopped Fiber	CR Aramid	CR Aramid	H-NBR Aramid/Cotton	CR Aramid
Upper Adhesion Rubber Chopped Fiber	CR	CR	H-NBR	CR
Cord	Aramid	Carbon	Aramid	Aramid
Lower Adhesion Rubber Chopped Fiber	CR	CR	H-NBR	CR
Bottom Rubber Chopped Fiber	CR Aramid	CR Aramid	H-NBR Aramid/Cotton	CR PBO Aramid
Bottom Fabric	Acrylic 1 ply	Acrylic 1 ply	CR Aramid/Cotton	Aramid/PET 1 ply

CR: Chloroprene Rubber

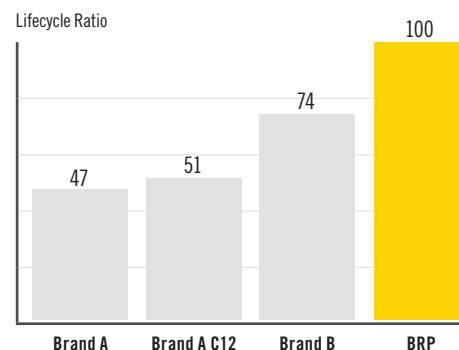
MODULUS & TENSILE STRENGTH

Based on BRP
Dynamometer
Testing



DURABILITY COMPARISON

When compared to
BRP's Performance
Drive Belt (100% PBO)
(715900212).



XPS ENGINE OILS & MAINTENANCE PRODUCTS ⁷⁷

XPS IS A COMPLETE RANGE OF PERFORMANCE PRODUCTS DESIGNED TO PROTECT, ENHANCE, AND EXTEND THE LIFE OF YOUR BRP VEHICLE. EACH HAS BEEN RIGOROUSLY DEVELOPED, TESTED AND APPROVED. TAKE THE GUESSWORK OUT OF YOUR VEHICLE MAINTENANCE AND GET TRUE XPS PEACE-OF-MIND.

KYLE CHANEY
PROFESSIONAL CAN-AM RACER,
MULTI-TIME GNCC CHAMPION



XPS ENGINE OILS



XPS 4-STROKE SYNTHETIC OIL (0W40)

- The best all-year-long choice for any BRP vehicle with a 4-stroke engine.
- Full-synthetic formula made from premium oil base stocks.
- Performs consistently throughout a broad temperature range.
- Tested and proven by BRP engineers to offer the best engine protection where its use is specified.
- Easy cold starting.
- Protects against corrosion and rust.
- Ambient temperature operating range +40°C/+104°F to -45°C/-49°F.

1 quart / 946 ml
779139

1 US gallon / 3.785 L
779140



XPS 4-STROKE SYNTHETIC BLEND OIL (5W40)

- The warm-weather choice for any BRP vehicle with a 4-stroke engine.
- Synthetic blend formula made from premium oil base stocks.
- Performs consistently throughout a broad temperature range.
- Tested and proven by BRP engineers to offer the best engine protection where its use is specified.
- Wet clutch compatible.
- Protects against corrosion and rust.
- Ambient temperature operating range +40°C/+104°F to -35°C/-31°F.

1 quart / 946 ml
779133

1 US gallon / 3.785 L
779134

CONVENIENT DO-IT-YOURSELF KIT!



XPS OIL CHANGE KIT

- Ultra-convenient "all-in-one" oil change kit saves time and money.
- Includes XPS Synthetic or Synthetic Blend Oil, oil filter, o-rings and washer.

For Can-Am off-road vehicle with 450 cc or lower Rotax engine (except Rally & DS models)

703500902 • Synthetic Blend (5W40)

\$62⁹⁹

703500903 • Synthetic (0W40)

\$71⁹⁹

For Can-Am off-road vehicle with 500 cc or higher Rotax engine (except Maverick X3, Traxter 1999-2005 & Quest models)

703500904 • Synthetic Blend (5W40)

\$51⁹⁹

703500905 • Synthetic (0W40)

\$59⁹⁹

Note: Please contact your dealer or visit our online store for suggested retail prices of oil based products.



NEW XPS PRODUCTS AVAILABLE THIS FALL!

XPS MAINTENANCE PRODUCTS

XPS SYNTHETIC GEAR OIL

- XPS Synthetic Gear Oil uses a unique combination of synthetic base stocks and additives that allow higher loads, superior shear stability and reduced oxidation compared to other synthetics and conventional API GL-5 gear oils.
- Its tremendous thermal stability and relatively constant viscosity give exceptional wear protection and superior performance for excellent low-temperature characteristics and improved gear protection at higher temperatures.
- Contains specific additives custom matched to provide the best performance of the BRP limited slip differentials.
- Offers added assurance during extended drain intervals.
- Exceeds API GL-5 specifications.
- Provides excellent protection in nearly all differentials, conventional and limited slip.
- Recommended for use in all Can-Am off-road vehicles.
- 1 quart / 946 ml

779158 • 75W-90

\$23⁹⁹

779160 • 75W-140

\$31⁹⁹

XPS ANTI-CORROSIVE LUBRICANT

- A multipurpose lubricant that can also be used to prevent rust, corrosion and moisture intrusion.
- It contains extreme pressure additives that work as an all-around lubricant for just about anywhere lubrication is needed.
- 12 oz. / 340 g

779168

\$11⁹⁹

XPS SUSPENSION GREASE

- Designed to work specifically with the components found in Can-Am off-road vehicles suspensions.
- It is highly stable and offers optimal lubrication at both extreme cold and high temperatures while protecting suspension components from dirt and moisture, as well as corrosion under extreme washout conditions.
- 14 oz. / 397 g

779163

\$10⁹⁹

XPS PRE-MIXED ANTIFREEZE/COOLANT

- XPS Antifreeze/Coolant contains the correct dilution and the necessary additives to prevent corrosion and inhibit cavitation in BRP cooling systems.
- Long-life, 5-year formula specially formulated for BRP vehicles.
- Superior heat transfer.
- Ideal replacement for vehicles that normally use a 2-year antifreeze/coolant (green).
- 5 years (orange) - 1 quart / 946 ml

779150

\$9⁹⁹

XPS MAINTENANCE PRODUCTS

XPS FUEL STABILIZER

- Ethanol-compatible and will stabilize fuel in your tank to keep it from breaking down and causing hard starting, throttle hesitation and poor run quality.
- Ethanol attracts moisture, and this product contains powerful anti-corrosion additives to protect fuel system components.
- Prevents problems associated with E10 fuels.
- 8 oz. / 240 ml

779171

\$9⁹⁹

NEW XPS CARBURETOR CLEANER

- Complete fuel treatment specially formulated to prevent small engine problems caused by Ethanol-blended fuels.
- It removes fuel system gum and varnish that may have accumulated during storage, stabilizes fuel against breakdown for 12 months or more, and adds corrosion protection from moisture for short- and long-term storage.
- It also helps restore throttle response and easy starting.
- It can be used periodically to maintain fuel system integrity, keep carburetor jets clean, and also combat moisture problems caused by Ethanol-blended fuels to keep ferrous and soft metal parts clean and free of corrosion.
- 12 oz. / 355 ml

779172

\$8⁹⁹

XPS CARBON FREE FUEL TREATMENT

- Combination of a fuel treatment and a fuel system cleaner that can be used periodically to restore lost starting or throttle performance, as well as maintain fuel system integrity and keep internal engine parts clean.
- It treats fuel for storage and addresses the moisture problems inherent in today's Ethanol-blended fuels, keeping ferrous and soft metal parts clean and free of corrosion.
- Uses patented, state-of-the-art additives.
- Cleans valves, sticky rings and combustion chamber.
- 12 oz. / 355 ml

779169

\$8⁹⁹

XPS BRAKE FLUID

- Meets or exceeds all DOT3 and DOT4 brake fluid requirements.
- High-temperature formula resists fade, and also conditions seals and o-rings in braking system.
- 12 oz. / 355 ml

779151

\$9⁹⁹

NEW XPS RACING BRAKE FLUID

- Exceeds DOT4 brake fluid requirements for extreme conditions and competition use.
- Extreme, 579-degree boiling point temperature is ideal for high-demand competition conditions to combat brake fade.
- 12 oz. / 355 ml

779152

\$15⁹⁹

NEW XPS HIGH PERFORMANCE SUSPENSION FLUID

- A synthetic, fade-free formula for servicing FOX® shocks.
- Specially formulated for high demand or racing application.
- Ultra high VI shock oil.
- Engineered viscosity for optimized performance with FOX® shocks valving.
- 12 oz. / 355 ml

779154

\$18⁹⁹

XPS CLEANERS

XPS SPRAY CLEANER & POLISH

- Features a water-based formula safe for all plastics.
- Rinse-free spray-on/buff-off formula.
- Protects against UV and ozone damage and resists dirt accumulation.
- It can be used on painted surfaces, fiberglass, chrome and plastics.
- 12 oz. / 340 g

219702844

\$9⁹⁹

XPS OFF-ROAD WASH

- A biodegradable non-toxic cleaner that removes mud and dried-on dirt from your off-road vehicle.
- Whether grimy from the track, the woods or the fields, this cleaner will leave your off-road vehicle sparkling.
- When used as directed, XPS Wash is safe for all off-road vehicle finishes.
- 32 oz. / 946 ml

219701702

\$9⁹⁹

XPS BRAKES & PARTS CLEANER

- A concentrated blend of solvents with a powerful blasting spray that effectively removes grease, grime, brake fluid and other contaminants from brake components and metal parts.
- Evaporates instantly and completely, leaving no residue to hinder performance.
- Contains no ozone depleters.
- 14 oz. / 397 g

219701705

\$7⁹⁹

XPS MICROFIBER TOWELS

- Made from extremely fine fibers whose soft surfaces have been perfected for use in drying and polishing.
- Won't harm delicate surfaces.
- Holds up to seven times its weight in water.
- Machine washable and reusable.
- Pack of 2.

219701759

\$8⁹⁹

CHART NEW TERRITORY

You know who you are.

You are among the few who dare to go off the beaten path. You are all about performance that goes beyond belief. Which is why you need products that go beyond expectations. XPS oils and lubricants answer the call. Specifically designed to optimize high performance, reliability and long engine life for Can-Am off-road vehicles, XPS was developed right alongside Rotax engines. Passing the highest levels of testing for an unparalleled experience in all conditions. Begin your journey at your BRP dealer.





Kyle Chaney
Professional Can-Am Racer,
Multi-time GNCC Champion

xps



ski-doo ***LYNX*** ***SEA-DOO*** ***EVINRUDE*** ***ROTAX*** ***Can-am***