



*Gear up for  
Adventure*

2018 ||| GENUINE PARTS | ACCESSORIES | RIDING GEAR  
INTERNATIONAL EDITION

SEA-DOO | 



# Revolutionize your Ride



## THE PERFECT MATCH SEA-DOO PFD



## RIDING GEAR

- |    |                       |    |                              |
|----|-----------------------|----|------------------------------|
| 3  | Find Your Perfect PFD | 14 | Wetsuits and Neoprene Shorts |
| 4  | Nylon PFDs            | 16 | Gloves and Eyewear           |
| 6  | Neoprene PFDs         | 17 | Footwear                     |
| 8  | Ecoprene PFDs         | 18 | Bags                         |
| 10 | PFDs Chart            | 19 | Beachwear                    |
| 12 | Riding Suit           | 20 | Sizing Chart                 |

## ACCESSORIES

- |    |                                |    |                             |    |                             |
|----|--------------------------------|----|-----------------------------|----|-----------------------------|
| 22 | Key Accessories for Every Ride | 32 | Custom Accessories          | 39 | Tech Accessories            |
| 26 | LinQ™ Accessories              | 33 | Sea-Doo SPARK™ Graphic Kits | 40 | Trailers                    |
| 28 | Watersport Accessories         | 34 | Docking                     | 42 | Covers                      |
| 29 | Steps and Ladders              | 36 | Bags and Storage            | 43 | Trailer accessories         |
| 30 | Controls and Grips             | 38 | Riding Essentials           | 44 | Electronics and Electricals |



# Beyond Typical Boundaries

WITH  
LinQ ACCESSORIES



## PARTS

- 47 BRP Genuine Parts
- 50 XPS Engine Oils and Maintenance



**GOING GLOBAL**

This catalog, global in nature, shares BRP's full parts, accessories and clothing product offering. Some products may not be available in your country, due to different climates, local certifications and/or legal requirements. Contact your BRP dealer for local specifics.

Products in this catalog will be available for purchase at your authorized Sea-Doo dealer. For advertising purposes, some scenes depicted in this catalog include professional riders and operators executing maneuvers under ideal and/or controlled conditions. Do not attempt any of these or any other risky maneuvers if they're beyond your level of riding ability, as well as your understanding and respect for the performance of your Sea-Doo watercraft. **RIDE SMART FROM THE START.** Always ride responsibly and safely. Follow all instructional and safety materials. BRP recommends a minimum operator age of 16 years old for riding a watercraft. Always wear appropriate protective clothing for your type of boating use, including a Coast Guard approved / EC certified PFD. Always remember that riding and alcohol/drugs don't mix. Operate your watercraft keeping a safe distance between yourself and others. Always observe applicable local laws and regulations. Because of its ongoing commitment to product quality and innovation, Bombardier Recreational Products Inc. (BRP) reserves the right, at any time, to discontinue or change specifications, prices, designs, features, models or equipment without incurring any obligations. Some models depicted herein may include optional equipment. Prices are based on Manufacturer Suggested Retail Prices. Dealers may sell for a different price. For Canada and US, taxes are not included. Depending on location, products are distributed by BRP US Inc., Bombardier Recreational Products Inc., BRP European Distribution SA, BRP Australia Pty Ltd., BRP Finland Oy, BRP Japan Ltd., BRP Comm & Trade (Shanghai) Co Ltd. or Bombardier Recreational Products Motores da Amazonia Ltda. ® are registered trademarks and TM and the BRP logo are trademarks of Bombardier Recreational Products Inc. or its affiliates. \* is a trademark of Bombardier Inc. used under license. Teflon is a registered trademark of E. I. du Pont de Nemours & Co. Velcro is a registered trademark of Velcro Industries. Clarino is a trademark of Kuraray Co. Ltd. CYCLOPS GEAR is a trademark of Cyclops Gear LLC. Bluetooth is a registered trademark owned by the Bluetooth SIG, Inc. GTX is a registered trademark of Castrol Limited, used under license. YUASA is a registered trademark of YUASA Batteries Inc. NGK is a registered trademark of NGK Spark Plugs, Ltd. Salt-Away is a trademark of Salt-Away Products. All other company and/or product names are trademarks of their respective holders. © 2017 BRP Inc. All rights reserved.



# 2 YEARS LIMITED WARRANTY\*



**GENUINE BRP PARTS AND ACCESSORIES**  
INSTALLED BY YOU OR YOUR AUTHORIZED BRP DEALER



**BRP RIDING GEAR**



**AFTERMARKET PRODUCTS**  
SOLD BY BRP

\*Warranty period may vary  
per your region.



## GET ALL THE DETAILS FROM YOUR SEA-DOO DEALER

\*Purchased at an authorized BRP dealership/distributor. Unless otherwise stipulated or required by law. Other exclusions may apply. See complete limited warranty or contact your authorized Sea-Doo dealer. This limited warranty does not apply to factory installed accessories. This limited warranty does not apply to Evinrude parts and accessories.

## RIDING GEAR SAFETY RULES AND RECOMMENDATIONS

When you're the driver of a personal watercraft, you need to take the safety of your passengers and yours personally.

1

You and your passengers are required to wear an approved PFD certified for use with a personal watercraft.

2

Wearing a wetsuit and/or neoprene bottom will provide adequate protection to the lower part of the body. You can suffer severe internal injuries if water is forced into a lower body cavity as a result of falling in the water or being near the jet thrust nozzle. Normal swimwear cannot appropriately protect against forceful water entry.

3

Finally, extra protective equipment such as footwear, gloves and goggles is also recommended.

YOU CAN FIND ALL OF THESE ITEMS AT AN AUTHORIZED SEA-DOO DEALER.



# FIND YOUR *perfect* PFD



*The All-Purpose*

## NYLON P.4

- Dries fast
- Lightweight
- Best value
- Low water absorption



*The Athletic*

## NEOPRENE P.6

- Fitted
- Increased comfort
- Ease of movement
- Warmest of all against the skin



*The Ultimate*

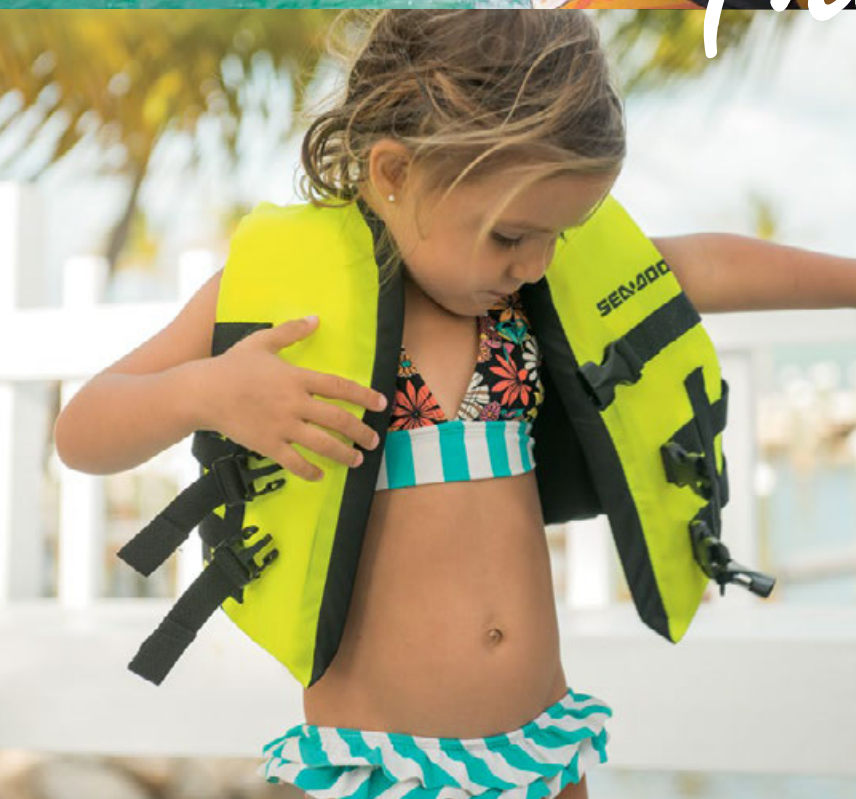
## ECOPRENE P.8

- The best of both worlds
- Dries as quick as nylon
- Lighter than neoprene when wet
- Low water absorption
- Added ventilation



# NYLON PFDS

Built to last and made to wow.  
Enjoy light and versatile comfort,  
safety and style.



 CATCH THE VIDEO  
[SEA-DOO.COM](https://sea-doo.com)



## I MOTION PFD TECHNICAL FEATURES

- Super-duty nylon outer shell.
- Polyethylene foam inserts.
- Segmented foam at back bottom for increased comfort while seated (on men's model only).
- US models - Coast Guard approved.
- EU models - EC certified (approved to EN ISO 12402-5).

- 1 4 woven straps with quick-release buckles (3 buckles on Canadian ladies' XL to 4XL PFDs).
- 2 Armholes cut large for riding comfort.
- 3 D-ring for key lanyard.
- 4 Loop at back neck to attach your goggles to your vest.



### MEN'S MOTION PFD

285876 (US) • M, L, XL, 2XL, 3XL, 4XL  
285878 (EU) • S, M, L, XL, 2XL, 3XL, 4XL  
Orange (12), Aqua (76), Red (30), Black (90)

### LADIES' MOTION PFD

285879 (US) • XS, S, M, L, XL, 2XL, 3XL, 4XL  
285881 (EU) • XS, S, M, L, XL, 2XL, 3XL  
Pink (36), Aqua (76)



### NAVIGATOR PFD

- Unisex value-built PFD.
- Super-duty nylon outer shell.
- Polyethylene foam inserts.
- 4 woven straps with quick-release buckles.
- Armholes cut large for riding comfort.
- D-ring for key lanyard.
- Loop at back neck to attach your goggles to your vest.
- US models - Coast Guard approved
- EU models - EC certified (approved to EN ISO 12402-5).

285848 (US) • XS, S/M, L/XL, 2XL/3XL, 4XL/6XL  
285850 (EU) • XS, S/M, L/XL, 2XL/3XL  
Hi-Vis Yellow (26), Black (90)



*Junior*

### JR. MOTION PFD

- Super-duty nylon outer shell.
- Polyethylene foam inserts.
- 3 woven straps with quick-release buckles.
- Armholes cut large for comfort.
- US models - Coast Guard approved
- EU models - EC certified (approved to EN ISO 12402-5).

285861 (US) • L (50-90 lb)  
285863 (EU) • L (30-40 kg)  
Red (30)



S (0-30 lb)



M (30-50 lb)



L (50-90 lb)

### KIDS' SANDSEA PFD

- Super-duty nylon outer shell.
- Polyethylene foam inserts.
- 3 woven straps with quick-release buckles (2 buckles on small size).
- Armholes cut large for comfort.
- Size small comes standard with Coast Guard approved / EC certified pillow.
- US models - Coast Guard approved
- EU models size S and M - EC certified (approved to EN ISO 12402-4).
- EU models size L - EC certified (approved to EN ISO 12402-5).

285839 (US) • S (0-30 lb), M (30-50 lb), L (50-90 lb)  
285841 (EU) • S (10-15 kg), M (15-20 kg), L (30-40 kg)  
Hi-Vis Yellow (26)



# NEOPRENE PFDS

Form-fitting flexibility and performance  
that moves with you and for you.



CATCH THE VIDEO  
[SEA-DOO.COM](http://SEA-DOO.COM)

*The Athletic*





## I FREEDOM PFD TECHNICAL FEATURES

- Ultra-durable neoprene outer shell.
- Combination of PVC and polyethylene foam inserts.
- Comfortable fit.
- Heavy-duty front zipper.
- US models - Coast Guard approved
- EU models - EC certified (approved to EN ISO 12402-5).

- 1 Segmentations at front and back for better comfort and ease of movement.
- 2 Side panels in stretch lining fabric for improved comfort.
- 3 2 woven straps hidden at back with quick-release buckles.
- 4 Armholes cut large for riding comfort.
- 5 D-ring for key lanyard.
- 6 Loop at back neck to attach your goggles to your vest.
- 7 Lumbar comfort zone inside the PFD.
- 8 Strategically-placed mesh drain panels.



- 7 **LUMBAR COMFORT ZONE**  
Extra foam padding to minimize the pressure on your lower back while bolstering support.



- 8 **MESH DRAIN**  
Mesh panels drain away excess water for quick drying and thermal regulated comfort.



### MEN'S FREEDOM PFD

285864 (US) • S, M, L, XL, 2XL, 3XL  
285866 (EU) • S, M, L, XL, 2XL, 3XL  
Yellow (10), Black (90)



### LADIES' FREEDOM PFD

285867 (US) • S, M, L, XL, 2XL, 3XL  
285869 (EU) • S, M, L, XL, 2XL, 3XL  
Black (90)

### FORCE PULLOVER PFD

- Ultra-durable neoprene outer shell.
- Soft PVC foam inserts.
- Anatomical cut with large armholes and strategically-placed mesh drain panels for riding comfort.
- Heavy-duty side zipper and two woven straps with quick-release buckles.
- D-ring for key lanyard.
- Loop at back neck to attach your goggles to your vest.
- US models - Coast Guard approved
- EU models - EC certified (approved to EN ISO 12402-5).

285819 (US) • XS/S, M, L, XL, 2XL/3XL  
285821 (EU) • S, M, L, XL, 2XL  
Red (30)



Some products may not be available or homologated in your region. Contact your dealer for more information.



# ECOPRENE PFDS

Ride the next wave with ultimate comfort:  
quick-drying, ventilated performance  
combining the lightweight versatility of  
Nylon and true comfort of Neoprene.



# *The Ultimate*



CATCH THE VIDEO  
[SEA-DOO.COM](https://sea-doo.com)



# AIRFLOW PFD TECHNICAL FEATURES

- Eco-friendly.
- Ecoprene outer shell.
- Comfortable fit.
- Heavy-duty front zipper.
- Soft, light and durable vest interior constructed of 100% PVC-free Biofoam.
- US models - Coast Guard approved
- EU models - EC certified (approved to EN ISO 12402-5).

- 1 Side panels in stretch lining fabric for improved comfort.
- 2 Armholes cut large for riding comfort.
- 3 2 woven straps with quick-release buckles.
- 4 Interior EVA molding that keeps the PFD surface away from the skin.
- 5 D-ring for key lanyard.
- 6 Loop at back neck to attach your goggles to your vest.
- 7 Lumbar comfort zone inside the PFD.
- 8 Strategically-placed mesh drain panels.



LADIES' BACK

## LUMBAR COMFORT ZONE

Extra foam padding to minimize the pressure on your lower back while bolstering support.

## MESH DRAIN

Mesh panels drain away excess water for quick drying and thermal regulated comfort.



## MEN'S AIRFLOW PFD

285870 (US) • S, M, L, XL, 2XL, 3XL  
285872 (EU) • S, M, L, XL, 2XL, 3XL  
Black (90)



## LADIES' AIRFLOW PFD

285873 (US) • S, M, L, XL, 2XL, 3XL  
285875 (EU) • S, M, L, XL, 2XL, 3XL  
Black (90)





## NYLON

The all-purpose PFD that combines great value with high quality components that won't compromise look, safety, comfort and functionality. Easy-fitting so it can be shared by a wide range of people, and versatile so it can be used for a variety of watersports. Your PFD needs to dry fast so it can be worn multiple times during the course of the day, making it perfect for the whole family.

KIDS' SANDSEA	JR. MOTION	NAVIGATOR	MOTION
285839 (US) 285841 (EU)	285861 (US) 285863 (EU)	285848 (US) 285850 (EU)	Men's • 285876 (US), 285878 (EU) Ladies' • 285879 (US), 285881 (EU)
Hi-Vis Yellow (26)	Red (30)	Hi-Vis Yellow (26), Black (90)	Men's • Orange (12), Red (30), Aqua (76), Black (90) Ladies' • Pink (36), Aqua (76)
(US) S (0-30 lb), M (30-50 lb), L (50-90 lb) (EU) S (10-15 kg), M (15-20 kg), L (30 - 40 kg)	(US) L (50-90 lb) (EU) L (30-40 kg)	(US) XS, S/M, L/XL, 2XL/3XL, 4XL/6XL (EU) XS, S/M, L/XL, 2XL/3XL	(US) Men's • M, L, XL, 2XL, 3XL, 4XL (EU) Men's • S, M, L, XL, 2XL, 3XL, 4XL (US) Ladies' • XS, S, M, L, XL, 2XL, 3XL, 4XL (EU) Ladies' • XS, S, M, L, XL, 2XL, 3XL



Dries faster  
than neoprene



Lightweight



Low water  
absorption



Affordable and  
best value



Perfect for sharing





## NEOPRENE

The athletic PFD just for you, that matches your active riding style, can handle rugged daily — and all-day — use, and adds warmth when needed. Snug-fitting to intuitively shadow your body's movements, and roomy where it counts not to hinder your mobility, your PFD will allow you to express yourself on the water.

### FREEDOM

Men's • 285864 (US), 285866 (EU)  
Ladies' • 285867 (US), 285869 (EU)

Men's • Yellow (10), Black (90)  
Ladies' • Black (90)

(US) S, M, L, XL, 2XL, 3XL  
(EU) S, M, L, XL, 2XL, 3XL

### FORCE PULLOVER

285819 (US)  
285821 (EU)

Red (30)

(US) XS/S, M, L, XL, 2XL/3XL  
(EU) S, M, L, XL, 2XL



Fitted



Warm against  
the skin



Increased level  
of comfort



Ease of  
movement

## ECOPRENE

The ultimate PFD that blends the functional attributes of nylon and performance features of neoprene, and also makes you feel environmentally green. PVC-free and sustainable. Your PFD will feel light even when wet and maximize air flow, because the more comfortable you are, the better and longer you will ride.

### AIRFLOW

Men's • 285870 (US), 285872 (EU)  
Ladies' • 285873 (US), 285875 (EU)

Black (90)

(US) S, M, L, XL, 2XL, 3XL  
(EU) S, M, L, XL, 2XL, 3XL

### ALL THE ADVANTAGES OF NEOPRENE



Dries as quick  
as nylon



Low water absorption



Added ventilation



30% lighter than  
neoprene when wet



# | RIDING SUIT

A versatile riding suit that suits you on and off the water. For those times when anything less isn't quite enough.



CATCH THE VIDEO  
[SEA-DOO.COM](http://SEA-DOO.COM)





# I ELEMENT RIDING JACKET AND PANTS TECHNICAL FEATURES

- Windproof, water-resistant and quick-dry light jacket and pants perfect for chilly days.
- Look cool while riding or when going to a restaurant.
- Laminated membrane offers water resistance and breathability.
- Teflon<sup>†</sup> water-repellent treatment.
- Brushed-knit polyester thermal fleece that offers ultimate warmth, stretch and breathability.
- Separate mesh pouch to store the jacket and pants.
- Jacket-to-pants connector loop at back.
- 100% polyester.
- Jacket and pants are sold separately.



## ELEMENT RIDING JACKET

- Fit to be worn under the PFD.
- Slim fit to keep snug against the wind and keep warmth inside.

- 1 Water-repellent treatment.
- 2 2 exterior pockets designed to avoid bulkiness with PFD when they are stuffed.
- 3 1 interior pocket.
- 4 Soft mesh inside for additional comfort.
- 5 Hook-and-loop tab at wrist for adjustment.

## ELEMENT RIDING PANTS

- Relaxed fit to allow wearing boardshorts underneath.
- 6 Comfort waistband with adjustment buckle.
- 7 2 exterior zippered pockets.
- 8 Pre-shaped legs designed for multiple riding positions.
- 9 Lower side leg zipper to snug the ankle while riding and may be worn open for a more casual look.
- 10 Ankle gaiter inside to prevent the wind from coming in and to keep warmth inside.



## MEN'S ELEMENT RIDING JACKET

440682  
S, M, L, XL, 2XL, 3XL  
Black (90)



## MEN'S ELEMENT RIDING PANTS

441572  
S, M, L, XL, 2XL, 3XL  
Black (90)



## LADIES' ELEMENT RIDING JACKET

440687  
XS, S, M, L, XL, 2XL  
Black (90)



## LADIES' ELEMENT RIDING PANTS

441565  
XS, S, M, L, XL, 2XL  
Black (90)



# WETSUITS AND NEOPRENE SHORTS

Keeping you warm and comfortable no matter where the ride takes you.



CATCH THE VIDEO  
SEA-DOO.COM

## ESCAPE WETSUIT TECHNICAL FEATURES

- Short wetsuit made of 2 mm neoprene and 4-way stretch fabric at underarm, sleeves, lumbar, crotch and collar for more flexibility.

- 1 Front upper zip entry with drain holes.
- 2 Ergonomical shaped mock neck collar and back bottom legs.
- 3 Raw edge sleeves, legs and collar openings for comfort.



» This watercraft-specific wetsuit features a front entry and zipper that facilitate closing the suit.



**MEN'S ESCAPE WETSUIT**

286590 • S, M, L, XL, 2XL, 3XL  
Black (90)

**LADIES' ESCAPE WETSUIT**

286591 • 6, 8, 10, 12, 14  
Black (90)

**HAVASU WETSUIT**

- Sleeveless 3/2 mm neoprene wetsuit.
- Built using stretch neoprene under the arms, side panels and on calves.
- Articulated back of knees for easy, unrestricted movements.
- Velcro® shoulder closure for easy changing.
- Textured knee pads for protection and grip.



MEN'S

LADIES'

**MEN'S**

286597 • S, M, L, XL, 2XL  
Black (90)

**LADIES'**

286626 • 6, 8, 10, 12, 14  
Matte Black (93)

**MEN'S X-TEAM NEOPRENE RIDING JACKET**

- Versatile 2 mm neoprene jacket.
- Back slit in hem for ease of sitting.
- 2-way front zipper.
- 2 front pockets.
- Plush lined hood.
- Cord adjustment at hood.
- Sea-Doo print on front, back and sleeves.
- Hook-and-loop adjustment at wrist.

286552 • M, L, XL, 2XL  
Black (90)



» The X-Team Neoprene Riding Jacket can be worn over your PFD, providing greater comfort during inclement weather riding.

**HAVASU JACKET**

- Lightweight 1 mm neoprene jacket for use with the Havasu Wetsuit or separately to take the chill off evening rides and cooler days.
- Front zipper.
- Relaxed fit.
- Pre-shaped sleeves.

**MEN'S**

- Sleeve openings and raw edge collar.
- 286598 • S, M, L, XL, 2XL  
Black (90)

**LADIES'**

- Front pockets with plastic snaps.
  - Underarm ventilation.
  - Reflective prints on shaped sleeves.
- 286625 • XS, S, M, L, XL, 2XL  
Matte Black (93)

**NEOPRENE SHORTS**

- Made of 2 mm neoprene.
- Elastic waist with drawstring closure.
- Reinforced seat and crotch stitching on ladies' model.

**MEN'S**

286442 • S, M, L, XL, 2XL, 3XL  
Black (90)

**LADIES'**

286443 • S, M, L, XL  
Black (90)



# GLOVES



## ATTITUDE GLOVES

- Gloves with Spandex finger gussets and stretch fabric for great comfort.
- Double stitching in high stress areas for durability.
- Clarino® Nash palm material and rubberized Pro-Grip on thumb and palm to ensure a solid hold.
- Adjustable Velcro wrist closure.

49% Polyester, 45% Clarino Nash, 5% Spandex, 1% PVC

## ATTITUDE FULL-FINGER GLOVES

286687 • XS, S, M, L, XL, 2XL, 3XL  
Black (90)



## ATTITUDE SHORTY GLOVES

- Webbed fingers for easy glove removal.

256688 • XS, S, M, L, XL, 2XL, 3XL  
Black (90)



# EYEWEAR



## SEA-DOO AMPHIBIOUS RIDING GOGGLES

- Made of super strong and lightweight material that floats above water.
- Aerodynamic design uses soft flexible frame that mold to the shape of any face while offering 100% UV protection.
- Suspended lens design for the best anti-fog performance with interchangeable polarized lenses.
- Goggles-to-PFD attachment cord to avoid losing your goggles in water.
- Adjustable Sea-Doo branded strap.
- Includes pouch that also doubles as cleaning cloth.

448565 • One size • Black (90)



## AMPHIBIOUS GOGGLES POLARIZED REPLACEMENT LENS

447791 • One size  
Bronze (92), Amber (95), Grey (09)



## AMPHIBIOUS GOGGLES CLEAR REPLACEMENT LENS

447792 • One size  
Clear (00)



## SEA-DOO RIDING GOGGLES

- Specially designed for watercraft applications to deliver the best eye protection ever.
- Revolutionary hypoallergenic silicone seal offering the finest anti-fog solution.
- Anti-fog and scratch-resistant mirrored lenses for accurate visibility on water.
- Goggles-to-PFD attachment cord to avoid losing your goggles in water.

447462 • One size • White (01), Yellow (10), Orange (12), Black (90)

- Adjustable Sea-Doo branded strap.
- Includes a Sea-Doo branded storage hard case, with pouch that also doubles as cleaning cloth.



# FOOTWEAR

» These boots not only protect and support your feet and ankles, but provide more grip in aggressive riding.

## SEA-DOO RIDING BOOTS TECHNICAL FEATURES

- 1 High cut neoprene boot limits the rocks and gravel from getting in.
- 2 Neoprene interior adds comfort and protection, while the mesh flow-through panels allow water to drain quickly.
- 3 Naturally shaped, molded sole with arch support provides maximum comfort and grip.
- 4 Fast and easy quick-lace system includes lace storage pocket.
- 5 Adjustable Velcro strap for a better fit at the ankle.



### SEA-DOO RIDING BOOTS

285807 • 6, 7, 8, 9, 10, 11, 12  
Black (90)



### SEA-DOO RIDING SHOES

- Pre-curved molded sole with arch support allows maximum comfort and grip.
- Low cut neoprene shoe provides protection from elements.
- Fast and easy quick-lace system with lace storing pockets.
- Mesh flow-through panels allow water to drain quickly.
- Neoprene interior for increased comfort and protection.

444228 • 6, 7, 8, 9, 10, 11, 12  
Black (90)



### SEA-DOO SANDALS

- Lightweight and comfortable design.
- Rubber insert insole for anti-slip performance.

444188 • 7, 8, 9, 10, 11, 12  
Black (90)

\*For European footwear equivalencies, see p.20.



# BAGS



CATCH THE VIDEO  
SEA-DOO.COM

## SEA-DOO DRY POUCH

- One-liter volume splash-proof protection for your small essentials.
- Made of lightweight material with waterproof coating.
- See-through TPU window and dry bag style roll-down top with clips.
- Belt hook for easy carrying.

**Note:** Not intended for immersion service.  
Phone not included.

469540 • One size  
Yellow (10)



## SEA-DOO CARRIER DRY BACKPACK BY OGIO

### TECHNICAL FEATURES

- 1 Completely waterproof roll-top construction.
- 2 Quick-access front zippered stash pocket.
- 3 Organization panel with 2 zippered pockets inside. Laptop and tablet sleeves.
- 4 Removable high visibility liner.
- 5 Dual-density shoulder straps for comfort.
- 6 2-way adjustable sternum strap.
- 7 360-degree reflective screen print.
- 8 Air flow back panel keeps the rider cool.
- 9 Off-center removable hip belt.



## SEA-DOO CARRIER DRY BACKPACK BY OGIO

- Strap containment system ensures all straps are secured at high speeds.
- Constructed of 420-denier nylon for durability.
- 20.5" H (rolled) x 10.5" W x 6.75" D (52 cm x 27 cm x 17 cm).
- 1600 cu in/26 L capacity.

469562 • One size  
Black (90)





# BEACHWEAR

*Wear  
your Passion*

## SIGNATURE TEE

- Relaxed t-shirt with round neck.
- 100% Cotton
- 286680 • S, M, L, XL, 2XL, 3XL
- Blue (80), White (01)



## LADIES' SEA-DOO SIGNATURE TEE

- Fitted round neck t-shirt made of stretchable fabric.
- 95% Cotton, 5% Elastane
- 286678 • XS, S, M, L, XL, 2XL
- White (01), Blue (80)



## SEA-DOO CLASSIC POLO

- 100 UPF UV protection.
- Wicking fabric.
- Hidden front snap placket.
- Sublimated non-faded print.
- 100% Polyester
- 286677 • S, M, L, XL, 2XL, 3XL
- Blue (80), Green (70)



## SEA-DOO CLASSIC CAP

- Lightweight adjustable cap.
- Plastic strap adjuster.
- 97% Polyester, 3% Spandex
- 286679 • One size
- Blue (80), Grey (09)



*Some products may not be available or homologated in your region. Contact your dealer for more information.*



# SIZING CHART

Size up for the perfect ride.



## HOW TO MEASURE

For best results, have someone else take measurements. Measure body in swimsuit or undergarments. Tape must be snug but not tight. If measurements fall between two sizes, order the larger size.

### HEIGHT

Stand with back straight, without shoes; measure from the top of the head to the floor.

### CHEST

Measure under your arms, around the fullest part of your chest.

### WAIST

Measure around your natural waistline, keeping one finger between the tape and body.

### HIPS

Stand with legs together, measure around the fullest part of your hips, ensuring the tape is level.

### ARM LENGTH

Let your arms hang down on the side in a slightly bent position. Measure from the center of the back of your neck, along the length of your arm, to the wrist.

### INSEAM

Without shoes, from crotch to the floor.

## WHAT CODE REPRESENTS YOUR SIZE?

1. Find your size.
2. The corresponding code is THE CODE you use to complete the part number on your order.  
Example: 440227\_90  
Size: M = Code "06", therefore 4402270690

SIZE	CODE	SIZE	CODE
ONE SIZE	00	2XL/3XL	74
XS	02	4XL/6XL	75
S	04	4	23
M	06	6	25
L	09	7	27
XL	12	8	28
2XL	14	9	29
3XL	16	10	30
4XL	18	11	31
XS/S	90	12	32
S/M	72	14	34
L/XL	73		

## PFDS

### MEN'S MOTION

Size	S	M	L	XL	2XL	3XL	4XL
US - Chest (in)	33-37	37-41	41-45	45-49	49-53	53-57	57-61
EU - Chest (cm)	84-94	94-104	104-114	114-124	124-135	135-145	145-155

### NAVIGATOR

Size	XS	S/M	L/XL	2XL/3XL	4XL/6XL
US - Chest (in)	28-32	32-40	40-52	50-60	61-66
EU - Chest (cm)	71-81	81-101	101-132	127-152	

### FORCE PULLOVER

Size US	XS/S	M	L	XL	2XL/3XL
Chest (in)	34-36	37-39	39-41	41-43	44-47
Size EU	S	M	L	XL	2XL
Chest (cm)	84-91	91-99	99-107	107-114	114-122

### MEN'S FREEDOM & AIRFLOW

Size	S	M	L	XL	2XL	3XL
US - Chest (in)	33-37	37-41	41-45	45-49	49-53	53-57
EU - Chest (cm)	84-94	94-104	104-114	114-124	124-135	135-144

## WETSUITS

### MEN'S

Size	S	M	L	XL	2XL	3XL
Height	1.68-1.73	1.73-1.80	1.80-1.88	1.83-1.90	1.83-1.93	1.83-1.93
Weight (kg)	59-68	68-79	79-91	88-100	98-107	107-116

### LADIES'

Size	6	8	10	12	14
Height	1.57-1.63	1.63-1.70	1.68-1.75	1.70-1.78	1.73-1.78
Weight (kg)	50-52	54-59	59-64	64-68	68-73

## RIDING SUIT AND BEACHWEAR

### MEN'S

Size	XS	S	M	L	XL	2XL	3XL
Chest (cm)	84-89	89-94	94-102	102-112	112-122	122-132	132-142
Waist (cm)	69-74	74-79	79-86	86-97	97-107	107-117	117-127
Low Hips (Seat) (cm)	84-89	89-94	94-102	102-112	112-122	122-132	132-142
Arm Length (cm)	76-79	79-81	81-84	84-86	86-89	89	89-91
Inseam (cm)	79-80	80-81	81	81	81	81-82	82-83

### LADIES'

Size	XS	S	M	L	XL	2XL
Chest (cm)	81-86	86-91	91-99	99-107	107-114	114-124
Waist (cm)	61-66	66-71	71-76	76-86	86-94	94-104
Low Hips (Seat) (cm)	86-91	91-97	97-102	102-112	112-119	119-132
Arm Length (cm)	79	79-81	81	81-83	83	83-86
Inseam (cm)	76	76	76	76	76	76-77

### LADIES' MOTION

Size	XS	S	M	L	XL	2XL	3XL	4XL
US - Chest (in)	28-32	32-36	36-40	40-44	45-49	49-53	53-57	57-61
EU - Chest (cm)	71-81	81-91	91-101	101-111	114-124	124-135	135-145	

### LADIES' FREEDOM & AIRFLOW

Size	S	M	L	XL	2XL	3XL
US - Chest (in)	30-33	33-37	37-41	41-45	45-49	49-53
EU - Chest (cm)	76-84	84-94	94-104	104-114	114-124	124-135

### KIDS' SANDSEA

Size	S	M	L
US - Weight	0-30 lb	30-50 lb	50-90 lb
EU - Weight	10-15 kg	15-20 kg	30-40 kg

### JR. FREEWAVE & JR. MOTION

Size	YOUTH (L)
Weight	(US) 50-90 lb (EU) 30-40 kg

## GLOVES

Measure palm width

Size	XS	S	M	L	XL	2XL	3XL
cm	7.6	8.3	9	10	11.4	13	14

## FOOTWEAR

Measure foot length

Size (CA)	6	7	8	9	10	11	12
Size (EU)*	39	40	41	42	43	44	45
Foot Length (cm)	23.7	24.7	25.3	26.0	27.0	28.0	28.7

\*Use CA codes to complete the part number on your order.





PFDS



TECH ACCESSORIES



CONTROLS AND GRIPS



RIDING SUIT



LinQ ACCESSORIES



XPS ENGINE OILS



BEACHWEAR



WATERSPORT ACCESSORIES



# SUGGESTED SEA-DOO ACCESSORIES FOR *every ride.*

From pure family fun to performance.

*Play*



## | SPARK 3UP

Handlebar with Adjustable Riser and Wiring Harness  
 Extended Range Variable Trim System  
 Depth Finder  
 Step Wedges  
 Reboarding Step  
 Snap-in Fenders

**P.30**  
**P.30**  
**P.46**  
**P.30**  
**P.29**  
**P.34**

Side Protector  
 Grip Mat and Grip Mat Extension  
 Front Storage Bin Kit  
 12 Volt Outlet and Installation Kit  
 Attitude Graphic Kit - Anchor (Level 3)  
 Sea-Doo SPARK Cover

**P.31**  
**P.31**  
**P.37**  
**P.45**  
**P.33**  
**P.43**





# Performance



## | RXT-X

LinQ Fuel Caddy  
 LinQ Bag  
 Marinized LinQ Hardware Kit  
 Removable Storage Bin Organizer  
 Storage Bin Organizer

P.38  
 P.36  
 P.36  
 P.37  
 P.37

Dry Bag  
 Snap-in Fenders and Installation Kit  
 Bilge Pump Kit  
 RXT-X Cover

P.37  
 P.34  
 P.46  
 P.43





## I GTX 155

LinQ Retractable Ski Pylon  
 Wakeboard Rack  
 BRP Premium Audio System  
 Bilge Pump Kit  
 Shock Tube  
 Depth Finder

**P.28**  
**P.29**  
**P.39**  
**P.46**  
**P.29**  
**P.46**

Removable Storage Bin Organizer  
 Storage Bin Organizer  
 Snap-in Fenders and Installation Kit  
 Safety Equipment Kit  
 GTX Cover

**P.37**  
**P.37**  
**P.34**  
**P.38**  
**P.43**





# *Hanging Out*



## **| GTX LTD**

Removable Storage Bin Organizer  
LinQ Cooler

**P.37**  
**P.36**

Snap-in Fenders and Installation Kit  
Folding Anchor Kit

**P.34**  
**P.35**





# FAST. EASY. SECURE.

Introducing a game-changer. The exclusive quick-attach rear cargo LinQ System is the best way to carry items on your new watercraft. Now securely attach cargo or ski pylon in seconds and without tools, redefining what is possible with a watercraft. Because when you can pack more, play more, ride farther and keep food and drink cold and fresh, you no longer just go on rides. You go on adventures.



LinQ BAG | 860201740 AND MARINIZED LinQ HARDWARE KIT | 295100751

The semi-rigid expandable bag stores 5.5 US gallons (21 L) and can stack on top of the LinQ fuel caddy (295100752). Designed to hold an entire adventure inside.

P.36

LinQ FUEL CADDY | 295100752

The easy-to-pour caddy can hold 4 US gallons (15 L) of fuel, to explore farther. Allows a LinQ Bag (860201740) to stack on top for more storage.

P.38





#### LinQ COOLER | 295100698

Rigid, durable and weather-resistant, the cooler keeps 4.2 US gallons (16 L) fresh and cold, and acts as a table between reconfigured seats for on-water picnics.

P.36



#### LinQ RETRACTABLE SKI PYLON | 295100717

With built-in grab handles for the spotter, the high-rise pylon keeps the rope out of the water and keeps the watersports going.

P.29

## MORE 2018 NEW PRODUCTS



P.37

#### REMOVABLE STORAGE BIN ORGANIZER

Easy storage on and off the watercraft, perfect for storing your gear.



P.37

#### STORAGE BIN ORGANIZER

Perfect for safely storing and organizing smaller valuables.



P.39

#### BRP PREMIUM AUDIO SYSTEM

Integrated. Bluetooth. Waterproof.



P.39

#### USB PORT

Allows to charge your devices.



# WATERSPORT ACCESSORIES



## NEW LinQ RETRACTABLE SKI PYLON

- High-rise pylon keeps rope out of water for better watersport fun.
- Features built-in spotter grab handles and retracts out of the way when not in use.
- LinQ mounted for quick and easy installation and removal.
- Standard on WAKE Pro models (2018).

RXT, RXT-X, GTX and WAKE Pro (2018)

295100717



**LinQ**  
SYSTEM™

SEA-DOO  
ESSENTIAL »

## RETRACTABLE SKI PYLON

- High-rise pylon keeps rope out of water for better watersport fun.
- Features built-in spotter grab handles and retracts out of the way when not in use.

RXT-X, GTX, RXT (2017 and prior) (except models with iS), GTI and GTS (2011 and up), GTR (2012 and up), except GTR-X (2017), GTX Limited (2014-2017)

295100457

## STRAP REPLACEMENT KIT

295100740



SEA-DOO  
ESSENTIAL »



## TOW PRO

- Three accessories in one – a tow pylon, spotter handle and equipment rack.
- Add more fun to pulling wakeboarders, wakeskaters and tubers thanks to higher tow point.
- Give the spotter more confidence with ergonomic grab handles.
- Carry your board out to clear water.
- Includes a strap for conveniently stowing your tow rope.

Sea-Doo SPARK 3up

295100605





### WAKEBOARD RACK

- Each rack holds one board while offering safe and easy board storage.
- Convenient to use and easily removable.

GTX with iS, RXT, RXT-X and WAKE Pro (2010-2017), GTI and GTS (2011 and up), GTR (2012 and up), GTX Limited (2014-2017)

295100453

RXT, RXT-X, GTX and WAKE Pro (2018)  
295100735



### SHOCK TUBE

- Protects passengers from ski rope kick-back and keeps it away from impellers.
- Durable nylon covered closed-cell foam.

295100662 • White

295100663 • Yellow



### SKI TOW EYE

- Replaces existing U-ring for easy towing of skiers and tubes.

GTX, GTS, GTI, RXT, GTR and RXP-X (2012)

291002351



### TUBE TOW ROPE

- 50' (15.2 m) heavy-duty tow rope.

All 3-seater watercraft

295100207



### REBOARDING LADDER

- Retractable boarding step designed for your watercraft.
- Makes reboarding from the water much easier.
- Spring-loaded platform that stays in the up position.

NEW RXT, RXT-X, GTX and WAKE Pro (2018)  
Standard on GTX and WAKE Pro (2018)

295100747

All models (2006 and up) (except WAKE Pro, RXT, RXT-X and GTX (2018), Sea-Doo SPARK)

295100742



### REBOARDING STEP

- Convenient step with knee-friendly surface.
- Installs easily on the right side of a Sea-Doo SPARK watercraft and can hold up to 250 lb (113 kg).
- The Reboarding Step easily mounts on the transom and can be installed by any authorized Sea-Doo dealer in minutes.

Sea-Doo SPARK

295100642



 **CATCH THE VIDEO**  
[SEA-DOO.COM](http://SEA-DOO.COM)



# CONTROLS AND GRIPS



## HANDLEBAR WITH ADJUSTABLE RISER FOR SEA-DOO SPARK

- The one-of-a-kind handlebar with adjustable riser gives you more leverage to easily maneuver the Sea-Doo SPARK and customize your experience to your personal riding style.
- Quickly adjust steering to a variety of heights - use the lower position for cruising/sit-down riding, or extend to maximum height in seconds for stand-up riding.
- Adjustable length of 1.625" to 4" (42.5 mm to 103.5 mm).
- Just flip the lever to make the adjustment, no tool required.

**Sea-Doo SPARK**  
**295100701**



### PARTS NUMBERS YOU WILL ALSO NEED FOR INSTALLATION:

Sea-Doo SPARK without iBR™ (2016 and prior): 278003491, 295100702  
 Sea-Doo SPARK without iBR (2017 and up): 278003491  
 Sea-Doo SPARK with iBR (2016 and prior): 278003490, 295100702  
 Sea-Doo SPARK with iBR (2017 and up): 278003490  
 \*Intelligent brake and reverse (iBR)

## ADJUSTABLE RISER RETROFIT KIT

- Replaces stock central console to allow for installation of Handlebar with Adjustable Riser (295100701).
- Handgrips with Palm Rest included.
- Reinforced design, includes all hardware required for installation.

**Sea-Doo SPARK (2016 and prior)**  
**295100702**



## WIRING HARNESS

(Not illustrated)

- Required in order to install the Handlebar with Adjustable Riser (295100701) and/or RF D.E.S.S Key (295100712).
- Works for either accessory or when using both at the same time, so no need to buy a second harness.

**Sea-Doo SPARK with iBR**  
**278003490**

**Sea-Doo SPARK without iBR**  
**278003491**

## STEP WEDGES

- Provide more stability and confidence in different tail stand riding positions.
- Rear footrest with a 45-degree slope to enable you to stand upright on your watercraft when performing tail stands and ultimately expand your range of possibilities by making it easier to pull off even more tricks.

**Sea-Doo SPARK**  
**295100705**



## EXTENDED RANGE VARIABLE TRIM SYSTEM (VTS)

(Not illustrated)

- This Sea-Doo exclusive accessory lets you exaggerate how high you can raise the nose or how deep you can bury it in the water.
- The extended range VTS doubles the range of adjustment compared to our current standard VTS.
- Adjustments are instantaneous thanks to the quick activation switch mounted on the handlebar to allow fine tuning of the watercraft trim angle while riding.
- Simple plug-in connection, and includes switch, cap and hardware necessary for installation.

**Sea-Doo SPARK with iBR (2017-2018)**  
**295100704**



# Comfort and Traction

1

## SIDE PROTECTOR

- This 6-piece rubber formed protector is specifically designed for the Sea-Doo SPARK.
- Its curves and angles follow the lines of the watercraft to enhance the look while protecting it from small impacts and wear.
- Doesn't get in the way of Snap-in Fenders or any maintenance you need to perform.

**Sea-Doo SPARK**

295100575

2

## GRIP MAT

- This EVA foam material grip mat ensures both comfort and traction.
- Easy to install with the double sided tape attached to the mat.

**Sea-Doo SPARK**

295100556

3

## GRIP MAT EXTENSION

- This EVA foam material grip mat ensures both comfort and traction.
- Allows you to reboard to a cushioned platform while protecting it from wear and tear.
- Easy to install with the double sided tape attached to the mat.
- For full protection on a 3up, add the Grip Mat (295100556).

**Sea-Doo SPARK 3up**

295100571



## NEW ERGOLOCK KNEE PADS

- Allow you to rest your knees on a comfortable pad.
- Help keep your legs locked in place on the Ergolock System.
- To be combined with the Floorboard Wedges (295100745) for improved balance on the vehicle.

**RXT, RXT-X, GTX and  
WAKE Pro (2018)**

295100744



## NEW FLOORBOARD WEDGES

- Designed for high-performance riding, extended angled footwell wedges will keep all riders and passengers firmly planted, comfortable and secure.
- When used in conjunction with our Ergolock Seat, the wedges ensure everyone can enjoy the full capabilities of the watercraft.

**RXT, RXT-X, GTX and  
WAKE Pro (2018)**

295100745





**NEW HANDLEBAR**

- 18" (22 cm) colored handlebar.
- Standard on RXP-X and GTR-X 2018.

**GTR-X and RXP-X (2018), Sea-Doo SPARK with Adjustable Riser**

- 277002068 • Dragon Red
- 277002069 • Neon Yellow

**HANDLEGRIPS WITH PALM REST**

- Designed and profiled to deliver a much firmer grip with less effort, allowing you greater control and comfort on longer rides, minus the hand fatigue.
- Sold individually.

**GTX, RXT, RXT-X and WAKE Pro (2010 and up), GTI, GTS and WAKE (2011 and up), GTR (2012 and up), RXP-X (2012 and up), Sea-Doo SPARK (2016 and up)**

**Right**

- 277001946 • Black
- 277002014 • Red

**Left**

- 277001958 • Black
- 277002015 • Red

**HANDLEGRIPS KIT**

- Better control and comfort using dual density rubber design.

**Fits all watercraft (2000 and up) except Sea-Doo SPARK**

**Sold in pairs**

- 295500976 • Blue / Black
- 295500977 • Earth Grey / Black
- 295500979 • Red / Black
- 295500980 • Pewter Grey / Black
- 295500981 • Yellow / Black

**Fits all watercraft (2000 and up)**

**Sold individually**

- 277001336 • Slate Grey

# CUSTOM ACCESSORIES

**CHILL SHADE**

- Don't go looking for shade - bring it with you.
- The innovative Chill Shade provides versatile protection both on the water and at the beach.
- Can be used at speeds up to 35 mph (56 km/h) when properly set.
- Can be easily installed while out on the water and stores conveniently.
- Made of colorful netting, it comes with 2 integrated pouches to be used as sand anchors on the beach.

**Sea-Doo SPARK**

295100574

**Sea-Doo SPARK**

295100638

**SEA-DOO SPARK PANEL KIT**

- Pump up your Sea-Doo SPARK with colorful panel kits.
- Kit includes: 3 panels, Sea-Doo SPARK decals, BRP logo and required hardware.

**Sea-Doo SPARK**

- 295100613 • Bubble Gum
- 295100614 • Licorice
- 295100615 • Orange Crush
- 295100617 • Pineapple
- 295100627 • Blueberry
- 295100628 • Key Lime
- 295100674 • Chili Pepper





## I GRAPHIC KITS

**More than 30 different graphic kits available in 3 levels of customization and color options for a wide range of combinations.**

These Sea-Doo exclusive Attitude Graphic Kits let you customize your Sea-Doo SPARK, whether for a simple facelift or because you want your watercraft to turn heads. All you need to do is go to [scsseadoowraps.com](http://scsseadoowraps.com) to view all the wrap options, then simply visit your Sea-Doo dealer, who will handle your order and the installation.

The Sea-Doo SPARK wraps are designed to bond to all surfaces of the vehicle, and the designs will not fade in sunlight, so you can count on an awesome splash of color every time you ride. The Attitude Graphic Kits are BRP licensed products supplied by SCS, and depending on the levels of customization selected, the price range is from \$100 to \$450 US\*.

\*Shipping and installation fees are not included.

### 3 LEVELS OF CUSTOMIZATION

LIGHT LEVEL 1



MEDIUM LEVEL 2



FULL LEVEL 3



TOMAHAWK



ANCHOR



POROUS



JETWASH



MAZE



POP



SCS offers custom registration numbers that can be ordered as an integral part of your Attitude Graphic Kit, or they can be customized and manufactured separately.

VIEW ALL THE CUSTOMIZATION OPTIONS AT [SCSSEADOWRAPPS.COM](http://SCSSEADOWRAPPS.COM) >>



# DOCKING



## SNAP-IN FENDERS

- Protect your investment from dock damage with these easy to install and remove fenders designed specifically for Sea-Doo watercraft.
- Pre-molded holes front and rear on the Sea-Doo SPARK models ensure a solid mount in the optimal spot.
- The Snap-in Fenders float and the high visibility orange color keeps them in sight.
- Requires Snap-in Fenders Installation Kit (295100550 or 295100729) to install on models other than Sea-Doo SPARK.
- Sold in pairs.
- Patent pending.

### Fits on all watercraft

295100418



**SEA-DOO  
ESSENTIAL »**

## SNAP-IN FENDERS INSTALLATION KIT

(Not illustrated)

- Lets you enjoy the fastest, easiest way to install protective fenders on your watercraft.

All watercraft with iBR except RXT, RXT-X, GTX and

WAKE Pro (2018), not required for Sea-Doo SPARK models

295100550

RXT, RXT-X, GTX and WAKE Pro (2018)

295100729

## SEA-DOO SPEED TIE

- Fully-integrated watercraft mooring system, providing the ultimate in convenient, quick and secure docking.
- The Speed Tie system is a must-have accessory that frees up storage space and ensures you have a dock line at all times.
- Stores 7' (2.1 m) of rope and locks to desired length.
- Standard equipment on the GTX Limited models.
- Sold in pairs.

### Sea-Doo SPARK

295100496

RXP-X (2012-2018), GTR-X (2017-2018),

RXT-X (2015)

295100466

GTR (2012 and up), GTI, GTI SE and GTS

(2011 and up), GTX without suspension

(2010-2017), WAKE Pro (2017 and prior),

RXT and RXT-X without suspension

(2010-2017), WAKE 155 (2010 and up)

295100680

## SEA-DOO

**ESSENTIAL »**

- » The Sea-Doo Speed Tie makes docking easier than ever with seven feet of retractable dock lines, at the helm and on the transom, that effortlessly stow out of sight.



## SEA-DOO SPEED TIE FOR DOCK

- Same exclusive mooring system available as a watercraft accessory, adapted for dock mounting.
- Provides quick and secure mooring for all watercraft, eliminating excessive rope on deck.
- Bolts directly to dock.
- Stores 7' (2.1 m) of rope and locks to desired length.
- Sold individually.

295100336





### NEW FOLDING ANCHOR KIT

- 3.5 lb (1.6 kg) grapnel folding anchor with protective coating.
- Perfect for temporary mooring of watercraft and small boats in mud, sand, gravel, and rock.
- Includes a 25' (7.6 m) marine-grade rope with an in-line buoy, heavy-duty stainless steel snap hook, and a nylon storage case.
- Compact enough for the storage compartment.

295100750



### SEA-DOO ESSENTIAL »

#### ANCHOR

- 11 lb (5 kg) fluke-style anchor with slip ring provides sure grip.

295100046



#### SANDBAG ANCHOR

- Made of 600-denier solution-dyed yellow polyester fabric capable of holding an estimated 45 lb (20 kg) of wet sand.
- Measures 15 3/4" x 9" (40 cm x 22.9 cm).
- 16' half-inch nylon strap (4.9 m x 1.3 cm).
- Plastic hook attachment and molded floater.

295100661 • Yellow

#### FENDER

- Polyform strength and dependability with a vinyl valve system for quick, flexible adjustment of firmness.
- One fender and one rope per package.
- Fender ties included.

295100372



#### DOCK TIE

- Moor your watercraft with this floating Sea-Doo shock cushioned nylon rope.
- Provides security to keep your watercraft and dock attached.
- One per package.

295100047





# BAGS AND STORAGE



**LinQ**  
SYSTEM™

## FAST. EASY. SECURE.

The exclusive quick-attach rear cargo LinQ System is the best way to carry items on your watercraft. Easy one-second on/off tool-less system.

### NEW LinQ BAG

- Semi-rigid expandable LinQ bag.
- 5.5 US gallons (21 L) capacity.
- Can be installed on top of LinQ Fuel Caddy (295100752).
- Utilizes LinQ mounting system (Patent US 8777531 and US 8875830).
- Protect your LinQ Bag from the erosive and corrosive effects of the harsh marine environment with the Marinized LinQ Hardware Kit (295100751).

**RXT, RXT-X, GTX and WAKE Pro (2018)**  
860201740



### NEW MARINIZED LinQ HARDWARE KIT

- Essential upgrade for LinQ Bag when used on a watercraft in saltwater.
- Includes stainless steel LinQ hardware to render your LinQ fully corrosion proof.
- Quick and easy installation.
- Not required for installation of the LinQ Cooler.

**For LinQ Bag**  
295100751



### NEW LinQ COOLER

- LinQ-mounted weather-resistant 4.2 US gallons (16 L) cooler.
- Rotomolded construction for exceptional rigidity and durability.
- Premium-quality foam insulation for optimal ice retention.

**Note:** Cannot be mounted on the LinQ Fuel Caddy (295100752).

**RXT, RXT-X, GTX and WAKE Pro (2018)**  
295100698



➤ More LinQ accessories on pages 26 and 36.



1

**NEW REMOVABLE STORAGE BIN ORGANIZER**

- Breathable front bin organizer made from high-quality premium-coated synthetic mesh.
- Carrying handle and easy storage on or off the watercraft.
- Perfect for storing wet clothes away from the rest of your gear or to transport gear to/from the watercraft.
- Quick attach fasteners to secure the bag in place inside the storage bin.
- Designed to be installed with the Storage Bin Organizer (295100733) for a complete set-up.

**RXT, RXT-X, GTX and WAKE Pro (2018)****295100732**

2

**NEW STORAGE BIN ORGANIZER**

- Leave-in breathable premium-coated synthetic mesh organizer.
- Perfect for safely storing and organizing smaller valuables.
- Designed to be installed in conjunction with the Removable Storage Bin Organizer (295100732) for a complete set-up.
- Standard on GTX Limited models (2018).

**RXT, RXT-X, GTX and WAKE Pro (2018)****295100733****GLOVE BOX ORGANIZER KIT**

- Kit includes glove box liner and semi-rigid splash-resistant portable case.
- Liner cushions the inside of the glove box to provide insulation.
- Case fits perfectly in the glove box and is easily accessible when opening the glove box cover.
- This semi-rigid case is perfect for carrying and storing valuables, e.g. keys, cell phone, wallet, sunglasses.

**Models on S³Hull™, all iS models****295100327****CARGO NET**

- With a 1.05 US gallons (4 L) capacity, this cargo net keeps regularly used items in place.
- The mesh material allows water to drain out easily and air to circulate, perfect to stow your Snap-in Fenders (295100418), tow ropes or diving mask.
- An elastic cord allows you quick access, while keeping your items secured.

**Sea-Doo SPARK****295100559**

10 L



25 L

**DRY BAG**

- Watertight bag.
- Puncture-resistant PVC coated polyester fiber material.
- Reinforced bottom.
- Offered in capacity 2.6 or 6.6 US gallons (10 L or 25 L).

**269502121 • Black • 2.6 US gallons (10 L)**

- Includes a shoulder strap.
- 420-denier resistant polyester with TPU coating.

**269001936 • Black • 6.6 US gallons (25 L)****FRONT STORAGE TRAY**

- Optimizes storage space.
- 3.2 US gallons (12 L) capacity.

**RXP-X (2012 and up), GTI and GTS (2011 and up), GTR (2012 and up), WAKE 155****295100583****FRONT STORAGE BIN KIT**

- Soft-sided design matches the contours of the Sea-Doo SPARK model to maximize storage.
- Maximum storage capacity: 7.4 US gallons (28 L).
- Polyurethane construction protects items from rough waves.
- Drain holes at bottom.
- Front Deflector Lid is included.

**Sea-Doo SPARK****295100504****FRONT DEFLECTOR LID KIT**

- Made of polypropylene, this removable deflector directs water away from the driver's feet and legs for a drier ride.

**Sea-Doo SPARK****295100553**



# RIDING ESSENTIALS



## NEW LinQ FUEL CADDY

- All the benefits of LinQ — simple, fast, secure with an integrated look.
- Easy one-second on/off tool-less system.
- Designed for easy pouring.
- 4 US gallons (15 L) capacity.
- Allows a LinQ Bag (860201740) to stack on top for more storage.
- Equipped with Marinized LinQ hardware.
- LinQ Cargo Base Kit included.

**Note:** Fuel caddies cannot be stacked.

**RXT, RXT-X, GTX and WAKE Pro (2018)**

**295100752**



**LinQ**  
SYSTEM™

## NEW LinQ FUEL CADDY REPLACEMENT CAP AND NOZZLE

(Not illustrated)

**860201624**

## SAFETY EQUIPMENT KIT

- This kit includes all the essentials for your watercraft.
- 50' (15 m) of buoyant heaving line, bailer, whistle and watertight flashlight.

**295100330**



## SEA-DOO

## ESSENTIAL »

## FIRE EXTINGUISHER

- A requirement for any watercraft.
- Ideal for grease, oil and electrical fires.
- Coast Guard approved.
- Not EC certified.
- Note: White color not available.

**295100005 • Red**

## SEA-DOO

## ESSENTIAL »



## WHISTLE

- "Pea-less" whistle.
- Produces an extremely loud, high, penetrating sound that can be heard over long distances.
- Unaffected by water; just clear with one quick blow.

**295500554**

## REGISTRATION KIT

- High quality UV-resistant registration kit.
- Easy to install without deformation, with a glue that will adhere to all surfaces, including Sea-Doo SPARK.
- Available in two contrasting colors that meet mandatory regulations for height and size.

## All watercraft models

**3" (7.6 cm)**

**295100570 • Black**

**295100578 • Light Grey**

**4" (10.2 cm)**

**Meets international laws**

**295100631 • Black**

## BLANK SHEET FOR STICKERS

(Not illustrated)

- Apply this self-adhesive sheet on your vehicle so you can add your own regional or other personalized stickers.

**295100654 • White**



# TECH ACCESSORIES



## NEW BRP PREMIUM AUDIO SYSTEM

- Fully integrated BRP Premium Audio System.
- Bluetooth® connectivity.
- Fully-submersible.
- Two powerful 50 watts speakers for music clarity, even while riding.
- Remote control pad on left speaker to quickly and easily change songs and volume.
- Music will play even after engine is turned off.



**RXT, RXT-X, GTX and WAKE Pro (2018)**

**295100711**

## NEW USB PORT

- Allows to charge your devices like phone and action camera.
- USB charger equipped with a smart module that detects the amperage your phone needs so you always enjoy consistent charge times and never have to worry about frying your device.



**RXT, RXT-X, GTX and WAKE Pro (2018)**

**295100710**

## NEW CGX3 CAMERA

- 160° wide angle lens.
- Resolution options: from 3MP up to 20MP and VGA.
- Video resolutions available: 2.7K at 30 frames per second (FPS), 720P at 120/60/30 FPS, 1080P at 60/30 FPS and VGA at 240 FPS.
- Record videos in 4K UHD at 24 FPS, 2.7K QHD at 30 FPS and 720P at 120 FPS.
- Memory: Class 10 32GB Micro SD card.
- 2" capacitive touchscreen.

**9700130090**

- Li-ion battery capacity of 1050mAh, working time of 1/1.5 hours and charging time of 3 hours (2 batteries included).
- WiFi function remotely operates up to 10-15 meters with mobile devices and MioCam app for Android and IOS.
- Waterproof up to 10 meters without a case.
- Features modes such as invert, time lapse, high speed and loop recording, motion detection, capture (while recording a video), burst and anti-sharing.
- Comes with 8 mounting accessories.



## 360° PANORAMIC HD VIDEO CAMERA

- Features a 220-degree wide-angle lens.
- Video resolutions up to 4K at 30 frames per second.
- Professional 16MP quality photos.
- Rugged, light and portable.
- Magnetically mounted for vibration-free footage and mounting to any metal surface.
- Comes with 32GB Class 10 micro SD card.

**9700020090**

- Waterproof case up to 164' (50m).
- Wi-Fi available to remotely control your camera from your smartphone or computer with the free App.
- 16 modes and effects, including driving mode, loop recording, time lapse and slow motion.
- Comes with 10 mounting accessories.
- Compatible with VR goggles.





# SEA-DOO TRAILER CLICK & GO

Soft design that protects the user and the craft, with no sharp angles that can break the skin or the bottom of the craft.



Clever, patented Click & Go locking mechanism for Spark.

No tie-down straps needed for securing the craft.

Optimized for all Spark models (1+1 and 1+2),  
no need to adjust supports or the attachment.

The total weight of the trailer (400 kg) makes it possible  
to tow it even with small vehicles.



Check out our Sea-Doo  
trailers at your closest  
dealer!



619590207

**SEA-DOO® SPARK™ CLICK & GO TRAILER**

- Robust attachment
- No need for separate supports
- Easy to use
- Clever, patented Click & Go locking mechanism
- Hinged light boom protects the lights during launch and removal
- No need for tie-down straps
- Safe design
- Soft design protects the craft and the user

**Dimensions**

- Total weight 400 kg (makes it possible to tow the trailer even with small vehicles)
- 390 cm overall length
- 160 cm overall width

**For all Sea-Doo Spark models****619590207**

619590207

**SEA-DOO BIG ONE TRAILER**

- No need for separate supports
- Easy to use
- Securing the watercraft using tie-down straps
- Safe, soft design that protects the craft and the user
- Removable light rack

**Dimensions**

- Total weight 600 kg
- 447 cm overall length
- 160 cm overall width

**For all Sea-Doo watercraft,  
excluding Spark models****619590223****ROLLER KIT FOR BIG ONE****619590397**



# COVERS

A storage cover is essential to ensure your Sea-Doo watercraft is protected from the elements and to maintain a fresh appearance. There's a perfectly fitted cover for every model in the line.



## SEA-DOO ESSENTIAL »



280000460\*, 295100718\*, 295100719\*



295100697\*



295100720



295100724



295100722



295100706\*\*, 295100707\*\*

### COVER REPLACEMENT HOOKS

All models  
(2017 and up)  
295100754



### COVER REPLACEMENT HOOKS

All models  
(2016 and prior)  
295100407



\*Convenient openings for easy access to the Speed Tie mooring system.

\*\*Easy access to the gas cap and storage box.



## COVERS

- Weather-resistant trailering cover protects your watercraft during storage and transportation.
- Heavy-duty canvas made of UV-resistant solution-dyed fabric with inner soft liner to protect colored panels from abrasion.
- Quick and easy installation with strapless fixation system.
- Patented air release vent system for trailering.
- Standard on GTX Limited models.

FITS	COLORS	SKU
------	--------	-----

### GTX, RXT MODELS WITH SUSPENSION

GTX S, GTX Limited S (2012-2017)	Black/Light Grey	295100718
RXT iS, GTX iS, GTX Limited iS (2009-2016)		280000460
RXT-X aS (2011-2016)		280000586

### GTX, RXT, WAKE PRO MODELS WITHOUT SUSPENSION

RXT, RXT-X, GTX and WAKE Pro (2018)	Black	295100697
GTX S, GTX Limited, RXT, RXT-X (2010-2017)	Black/Light Grey	295100719
WAKE Pro (2010-2017)	Black	295100720

### RXP-X, GTR-X MODELS

RXP-X (2012-2018)	Black/Light Grey	295100721
GTR-X (2017-2018)		

### GTS, GTI, GTR, WAKE MODELS

GTS, GTS Rental, GTI, GTI SE, GTI Limited (2011-2017)	Black/Light Grey	295100722
GTR (2012-2018)		295100723
WAKE (2011-2018)	Black	295100724

### SEA-DOO SPARK MODELS

Sea-Doo SPARK 2up (compatible with adjustable riser)	Black	295100706
Sea-Doo SPARK 3up (compatible with adjustable riser)		295100707

**Note:** For prior model years, please ask your dealer for details.

Some products may not be available or homologated in your region. Contact your dealer for more information.

## TRAILER ACCESSORIES



### NEW BOLT-ON® RETRACTABLE RATCHETING TIE-DOWNS

- Perfect for transporting your watercraft or securing loads.
- Mounts easily: bolts on any flat surface (e.g. truck bed or frame).
- 1" x 6' (2.5 cm x 1.8 m) tie-down strap with heavy-duty stitching that delivers a 500 lb (226 kg) working load strength and 1500 lb (680 kg) break strength.
- Sold in pairs.
- Convenient retractable push button automatically slackens, spools and stores away strap, while the ratchet mechanism tightens the strap snugly to secure your vehicle or load into place.
- Rubber ratcheting handle provides firm grip, and the hook is vinyl coated to protect whatever surface it hooks into.

**All watercraft**

**295100737**



### RATCHET TIE-DOWNS

- 400 lb (181 kg) safe working load.
- 1" x 10' (2.5 cm x 3 m) strap with Sea-Doo, Ski-Doo and Can-Am logos.
- Deluxe ratchet with rubber handle.
- Coated S hooks.
- Pack of 2.

**All watercraft**

**860200447**



### RATCHET TIE-DOWNS

- Designed specifically for strapping a watercraft to a trailer: one strap does it all.
- Custom 4-hook system is ideal for quick installation/removal without separating strap from ratchet.
- Fingertip tension adjustment with deluxe ratchet.
- 1" (2.5 cm) Sea-Doo branded polyester strap features hull protector pads, extra strap holder and coated hooks.
- Sold individually.

**All watercraft (except Sea-Doo SPARK)**

**295100389**



# ELECTRONICS AND ELECTRICALS



## VARIABLE TRIM SYSTEM (VTS)

- Adjustments are instantaneous thanks to the quick activation switch mounted on the handlebar to allow fine tuning of the watercraft trim angle while riding.
- Simple plug-in connection and includes switch, cap and hardware necessary for installation.

**Sea-Doo SPARK with iBR**

295100630

- » The Variable Trim System provides preset positions for quick settings when adjusting the watercraft trim. When you trim up, you'll have a drier ride, which helps when towing. When you trim down, you can ride more aggressively while staying glued to the water.



## EXTENDED RANGE VARIABLE TRIM SYSTEM (VTS)

- This Sea-Doo exclusive accessory lets you exaggerate how high you can raise the nose or how deep you can bury it in the water.
- The extended range VTS doubles the range of adjustment compared to our current standard VTS.

**Sea-Doo SPARK with iBR (2017-2018)**

295100704

- Adjustments are instantaneous thanks to the quick activation switch mounted on the handlebar to allow fine tuning of the watercraft trim angle while riding.
- Simple plug-in connection and includes switch, cap and hardware necessary for installation.
- Standard on Sea-Doo SPARK TRIXX models.



## MANUAL REVERSE KIT

- This kit can be easily added to your Sea-Doo SPARK and will help immensely in docking maneuvers and trailer loading.
- A lever located on the left side makes it easy to engage reverse and avoid the need for aggressive or dangerous maneuvers.

**Sea-Doo SPARK without iBR**

295100596



**RF D.E.S.S.™ KEY**

- Anti-theft technology for the marine world.
- Digitally Encoded Security System (D.E.S.S.) Key's ball-and-socket design provides riders with easy and quick starts every time.
- A radio frequency chip inside the key communicates with the vehicle wirelessly, so your Sea-Doo SPARK starts only when the key code matches the vehicle, for ultimate peace of mind.
- Unlike previous D.E.S.S. keys, harness now sold separately.
- Requires Wiring Harness to install on SPARK without iBR (278003491), SPARK with iBR (278003490) and SPARK TRIXX (278003195, 278003490).

**Sea-Doo SPARK**

295100712

**LEARNING KEY LANYARD**

- Reduces the top speed of your watercraft and allows less experienced riders to learn gradually.

**DI and 4-TEC models (2014 and prior)**

278002203

**D.E.S.S. FLOATING SAFETY LANYARD**

- Replacement D.E.S.S. lanyard.

**All models (2014 and prior)**

278002199

**12-VOLT OUTLET AND INSTALLATION KIT**

- Use this 12V outlet to charge your phone or GPS unit.
- Equipped with waterproof cover to prevent water infiltration.

**GTx and RXT without suspension (2015 and prior), WAKE Pro (2015 and prior)**

295100612

**GTx and RXT without suspension and WAKE Pro (2016-2017)**

295100675

**Sea-Doo SPARK, GTI, GTS, GTR, WAKE 155, RXP-X**

295100577

**X PACKAGE FUNCTIONS MODULE**

- Activates X Package functions on gauge: lap timer, fuel time and distance to "empty," average and top speed/RPM display and engine temperature.
- User-friendly interface on gauge.
- Simple plug-in connection.
- Includes hardware necessary for installation.

**Models with iBR (2011 and up), (except Sea-Doo SPARK models)**

295100431

**SKI FUNCTIONS MODULE**

- Activates ski mode.
- Offers a choice of different preset acceleration curves for perfect launch every time when towing a skier or wakeboarder, plus steady tow speed.
- User-friendly interface on gauge.
- Simple plug-in connection.
- Includes hardware necessary for installation.

**Models with iBR (2011 and up), standard on WAKE models**

295100432





**DEPTH FINDER**

(Not illustrated)

- Displays the water depth below the hull.
- Plug-and-play connection.
- Standard on GTX Limited models.

MODEL	YEAR	295100324	295100332	295100679
<b>SEA-DOO SPARK</b>	2014 and up**			•
<b>GTI</b>	2008-2010	•		
	2011-2014*			•
	2014*-2016			•
	2017 and up**			•
<b>GTI SE</b>	2011-2014*			•
	2014* and up			•
<b>GTI SE (900 HO)</b>	2017 and up**			•
<b>GTI LIMITED</b>	2011-2014*			•
	2014* and up			•
<b>GTS</b>	2011-2014*			•
	2014*-2016			•
	2017 and up**			•
<b>GTX</b>	4-TEC engine (2009 and prior, except 2002)	•		
	2010		•	
	2011*-2015			•
	2016-2017			•
	2018			•
<b>GTX iS / S / aS</b>	2010 and prior		•	
	2011 and up			•
<b>GTX LIMITED</b>	2011-2015			•
	2016-2017			•
	2018			•
<b>RXT / RXT-X</b>	4-TEC engine (2009 and prior, except 2002)	•		
	2010		•	
	2011-2015			•
	2016-2017			•
	2018			•
<b>RXT aS</b>	2011 and up			•
<b>GTR</b>	2011-2014*			•
	2014* and up			•
<b>GTR-X</b>	2017 and up			•
<b>RXP-X</b>	2012-2015			•
	2015 and up			•
<b>WAKE Pro</b>	2010 and prior		•	
	2011-2015			•
	2016 and up			•
	2018			•
<b>WAKE</b>	2011-2014*			•
	2014 and up			•
	2018**			•

\* See your certified BRP dealer to match the right kit to your watercraft.

\*\* Electric Connection Kit (295100599) required for installation.

**BILGE PUMP KIT**

(Not illustrated)

- Keeps engine compartment dry.
- Includes 460 gph bilge pump, stainless steel mounting bracket, bilge fitting, hose and hardware necessary for installation.

MODEL	YEAR	295100497	295100634	295100678	295100681	295100739
<b>SEA-DOO SPARK</b>	2014 and up	•				
<b>GTI</b>	2011-2014				•	
	2015-2016				•	
	2017 and up	•				
<b>GTI SE</b>	2011-2014				•	
	2015 and up				•	
<b>GTI SE 130</b>	2018	•				
<b>GTI SE (900 HO)</b>	2017 and up	•				
<b>GTI LIMITED</b>	2011-2014				•	
	2015 and up				•	
<b>GTS</b>	2011-2014				•	
	2015-2016				•	
	2017 and up	•				
<b>GTX</b>	2010-2015*				•	
	2015*		•			
	2016-2017			•		
	2018					•
<b>RXT / RXT-X</b>	2010-2015*				•	
	2015*		•			
	2016-2017			•		
	2018					•
<b>GTR</b>	2011-2014*				•	
	2014* and up				•	
<b>GTR-X</b>	2017 and up				•	
<b>RXP-X</b>	2012-2015				•	
	2015 and up			•		
<b>WAKE Pro</b>	2010-2015*				•	
	2015*		•			
	2016-2017			•		
	2018					•
<b>WAKE</b>	2011-2014*				•	
	2014 and up				•	
	2018	•				

\* See your certified BRP dealer to match the right kit to your watercraft.

**ELECTRIC CONNECTION KIT**

(Not illustrated)

- A very convenient and safe way to add electrical accessories.
- Plug-and-play connection.
- Required in order to install the depth finder on specific models (refer to the depth finder table).

**Models on Polytec™ Hull****295100599**



# BRP GENUINE PARTS

Your watercraft is the sum of its parts. Make every one count by using only BRP genuine parts.



## MAINTENANCE

Choose from products designed to make regular maintenance easy and keep your watercraft at its best.

### NGK® SPARK PLUGS

• BRP dealers carry the full line of premium NGK spark plugs for Sea-Doo watercraft.

**DCP-R8E** 296000407  
707000246

**CR8EB**  
415129403

**FR9C-G**



### OIL FILTER

420956741  
420956744



See your certified BRP dealer to match the right parts to your watercraft.

### DRILL PUMP

• Safely and easily removes engine oil.

All 4-TEC engines  
295100244



### ANTI-CORROSION SPRAY

• Heavy, waxy coating specifically designed to protect your engine from rust and corrosion.  
• Highly effective against corrosion caused by salt water and salt spray.

219700304 • 11 oz. (312 g)



Some products may not be available or homologated in your region. Contact your dealer for more information.





## POST-RIDING

The last step before putting the cover on, post-ride maintenance will extend the life of your watercraft over the long run.

### SALT-AWAY†

- Mixed with water, it washes away the salt and leaves a protective coating on the surface to prevent rust and corrosion.
- Can also be used for wash and maintenance.

#### Refill

295100220 • 1 quart (946 ml)

295100219 • 1 US gallon (3.785 L)

Concentrate with dispenser

295100218 • 1 quart (946 ml)



**SALT-AWAY  
DISPENSER UNIT**  
295100221



**FLUSH ADAPTER**  
• For most watercraft models with a threaded water outlet fitting on the ride shoe.  
295500473



### FLUSH KIT

- A must to help keep your engine corrosion-free and to maximize performance.
- Kit includes all necessary components for a hassle-free flush.

Sea-Doo SPARK, Standard on 2015 and up models

295100555



### COUPLER HOSE

- For most watercraft models that already have a "T" fitting.
- Also for watercraft models that use the flush adapter on the ride shoe water outlet.

295500258

## REPLACEMENT PARTS

Our extensive range of authorized replacement parts is just an order away, from your local dealer.

### YUASA† BATTERIES

- Top-of-the-line models from the preferred original equipment battery supplier in North America.

18 amps. Wet (YTX20L)

Factory activated (Non-spillable)

410301203

30 amps. Dry (YB30CL-B)

278001882

30 amps. Wet (Y1X30L)

Factory activated (Non-spillable)

515176151



### CTEK BRP 5.0 CHARGER

860200997





**NEW LIFT KIT**

- Accurately lifts and positions your watercraft with a lift kit of nylon webbing and vinyl-coated steel lift plates.
- Lifting capacity of 1,200 lb (544 kg).
- Allows lifting from both straight and angled positions.

**295100758**

Ask your certified BRP dealer for details.

**NEW ANTI-DEBRIS WATER INTAKE GRATE**

(Not illustrated)

- Protects jet pump assembly and cooling system by blocking rocks and debris larger than 0.39" (10 mm).
- Helps avoid damage and premature wear of the impeller and the wear ring.
- Also helps reduce algae accumulation.
- Recommended if watercraft usage includes frequent beaching or shallow and swift water riding.
- Expect a slight performance reduction.

**GTI, GTS and WAKE (2011 and up)****271001948****SACRIFICIAL ANODES**

- Sacrificial anodes are specifically designed to protect parts of your personal watercraft that are underwater from galvanic corrosion.
- Like the name implies, they essentially "sacrifice" themselves by absorbing the electrochemical process of corrosion to prevent metal components like the impeller, jet pump nozzle or engine from being "eaten away" instead.
- Galvanic corrosion can cause major damage if not controlled. Inspect your sacrificial anode at least once a month. Replace it when it is 50% depleted.



**Outside diameter: 26 mm**  
**Height: 6 mm**  
**271001920**



**Outside diameter: 26 mm**  
**Height: 13 mm**  
**271001813**



**1/4-18NPT Anode for intercooler on models 260 and 300 hp (2016 and up)**  
**271001942**

**NEW SUPERCHARGER REPAIR KIT**

- Complete kit to rebuild your supercharger.
- Made of quality Sea-Doo genuine parts and metal washers to increase reliability.

**Fits the 215, 255 and 260 HP models****420881102**

See your certified BRP dealer to match the right parts to your watercraft.

**IMPELLERS**

- High performance impellers designed specifically to maximize your Sea-Doo watercraft performance.



See your certified BRP dealer to match the right parts to your watercraft.

**WEAR RING**

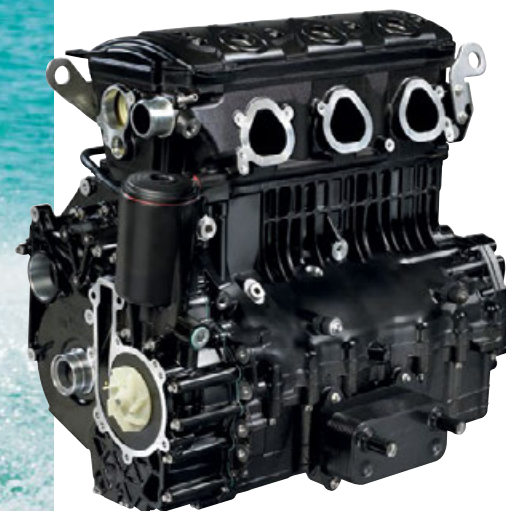
- Simple, cost effective way to keep the pump system operating like new.
- Restores tight clearance to your impeller.
- Reduces cavitation and recovers lost performance caused by a worn ring.

**STAINLESS STEEL WEAR RING**

- Strong and durable stainless steel replacement wear ring.
- Resists debris damage and corrosion.
- Recommended if watercraft usage includes frequent beaching or shallow and swift water riding.
- Direct replacement and easy press-in installation.

**GTI, GTS and WAKE**  
**(2011 and up)****267000800****Sea-Doo SPARK**  
**(Not illustrated)****295100649**

See your certified BRP dealer to match the right parts to your watercraft.

*Some products may not be available or homologated in your region. Contact your dealer for more information.***BRP REBUILD CENTER**

**BRP has a Rebuild Center for watercraft engines, short blocks, cylinders and crankshafts. Available from your dealer, rebuilt parts come with a one year warranty and save you significant money.**

Experienced BRP technicians use only new, original Rotax parts — there's no cutting corners and reusing parts that "look good." For instance, when rebuilding a crankshaft, ALL bearings, rods, pins and seals are replaced, regardless of condition.

Rebuilt long blocks get new pistons, rings, gaskets, crankshaft bearings, valves and seals — all replaced with new genuine Rotax parts.

The BRP Rebuild Center has been providing this service to dealers and consumers for more than 30 years.

**Ask your authorized Sea-Doo dealer for details.**



# XPS ENGINE OILS AND MAINTENANCE PRODUCTS

The XPS brand has a complete family of performance products to expertly protect, enhance and extend the life of your Sea-Doo watercraft.



## XPS ENGINE OILS



### XPS 4-STROKE SYNTHETIC OIL

- Full-synthetic formula made from premium oil base stocks.
- Performs consistently throughout a broad temperature range.
- Tested and proven by BRP engineers to offer the best engine protection where its use is specified.
- Wet clutch compatible.
- Protects against corrosion and rust.
- Ambient temperature operating range 40°C/104°F to -45°C/-49°F.

1 quart (946 ml)	1 US gallon (3.785 L)
779139 (US)	779140 (US)
293600112 (EU)	293600115 (EU)
619590114	619590115
(Scandinavia)	(Scandinavia)



### XPS 4-STROKE SYNTHETIC BLEND OIL

- The warm-weather choice for any BRP vehicle with a 4-stroke engine.
- Synthetic blend formula made from premium oil base stocks.
- Performs consistently throughout a broad temperature range.
- Tested and proven by BRP engineers to offer the best engine protection where its use is specified.
- Wet clutch compatible.
- Protects against corrosion and rust.
- Ambient temperature operating range 40°C/104°F to -35°C/-31°F.

1 quart (946 ml)	1 US gallon (3.785 L)
779133 (US)	779134 (US)
293600121 (EU)	293600122 (EU)
619590109	619590112
(Scandinavia)	(Scandinavia)



### XPS 2-STROKE FULL SYNTHETIC OIL

- Specifically engineered to meet the unique needs of Rotax DI and RFI engines, it provides maximum protection against engine wear.
- Uses a highly-evolved additive package to keep engine parts lubricated, clean and free of wear.
- This low smoke, low odor formula also allows for maximum engine performance.
- Can be used in direct, semi-direct fuel injection system and high performance carbureted 2-stroke engines.

1 quart (946 ml)	1 US gallon (3.785 L)
779126 (US)	779127 (US)
293600132 (EU)	293600133 (EU)
619590106	619590107
(Scandinavia)	(Scandinavia)



### XPS 2-STROKE MINERAL OIL

- Designed for use in carbureted engines as an injection oil or premix, it is made from high-quality mineral based stocks.
- It includes the detergency package engineered exclusively for use in Rotax engines.
- Performs consistently throughout a broad temperature range and offers excellent lubrication in all conditions.

1 quart (946 ml)	1 US gallon (3.785 L)
779119 (US)	779120 (US)
293600117 (EU)	293600118 (EU)
619590101	619590103
(Scandinavia)	(Scandinavia)



### XPS 4-STROKE OIL CHANGE KIT

- Ultra-convenient "all-in-one" oil change kit saves time and money.
- Includes XPS Synthetic Blend Oil, oil filter, o-rings.

295501157 • 1503 4-TEC

295501138 • 900 ACE

295501156 • 1630 ACE

**Note:** Please contact your nearest dealer for suggested retail prices of oil based products.



## XPS CLEANERS



### XPS BOAT AND WATERCRAFT CLEANING AND DETAILING KIT

- Everything needed for care and cleaning, including the bucket.
- Includes: All Purpose Cleaner, Vinyl Cleaner, Water-Based Spray Cleaner and Polish, 2 microfiber towels and a Deluxe Wash Sponge.

219702871

### ALL THESE PRODUCTS ARE AVAILABLE INDIVIDUALLY

#### XPS ALL PURPOSE CLEANER

219701709 • 32 oz. (946 ml)

#### XPS SPRAY CLEANER AND POLISH

219702844 • 12 oz. (355 ml)

#### XPS VINYL CLEANER

219701710 • 32 oz. (946 ml)

#### XPS BOAT AND WATERCRAFT WASH AND WAX

219701711 • 32 oz. (946 ml)

### XPS MICROFIBER TOWELS

- Made from extremely fine fibers whose soft surfaces have been perfected for use in drying and polishing.
- Won't harm delicate surfaces.
- Holds up to seven times its weight in water.
- Machine washable and reusable.
- Pack of 2

219701759



Some products may not be available or homologated in your region. Contact your dealer for more information.



# MAINTENANCE PRODUCTS



## XPS PRE-MIXED ANTIFREEZE/COOLANT

- XPS Antifreeze/Coolant contains the correct dilution and the necessary additives to prevent corrosion and inhibit cavitation in BRP cooling systems.
- Long-life, 5-year formula specially formulated for BRP vehicles.
- Superior heat transfer.
- Ideal replacement for vehicles that normally use a 2-year antifreeze/coolant (green).

**5 years (orange) 1 quart (946 ml)**  
**779150 (US)**  
**219702685 (EU)**  
**619590204 (Scandinavia)**



## XPS CARBON FREE FUEL TREATMENT

- Combination of a fuel treatment and a fuel system cleaner that can be used periodically to restore lost starting or throttle performance, as well as maintain fuel system integrity and keep internal engine parts clean.
- It treats fuel for storage and addresses the moisture problems inherent in today's Ethanol-blended fuels, keeping ferrous and soft metal parts clean and free of corrosion.
- Uses patented, state-of-the-art additives.
- Cleans valves, sticky rings and combustion chamber.

**12 oz. (355 ml)**  
**779169 (US)**  
**219702533 (EU & Scandinavia)**



## XPS CARBURETOR CLEANER

- Complete fuel treatment specially formulated to prevent small engine problems caused by Ethanol-blended fuels.
- It removes fuel system gum and varnish that may have accumulated during storage, stabilizes fuel against breakdown for 12 months or more, and adds corrosion protection from moisture for short- and long-term storage.
- It also helps restore throttle response and easy starting.
- It can be used periodically to maintain fuel system integrity, keep carburetor jets clean, and also combat moisture problems caused by Ethanol-blended fuels to keep ferrous and soft metal parts clean and free of corrosion.

**12 oz. (355 ml)**  
**779172 (US)**  
**779184 (EU & Scandinavia)\***



## XPS FUEL STABILIZER

- Ethanol-compatible and will stabilize fuel in your tank to keep it from breaking down and causing hard starting, throttle hesitation and poor run quality.
- Ethanol attracts moisture, and this product contains powerful anti-corrosion additives to protect fuel system components.
- Prevents problems associated with E10 fuels.

**8 oz. (240 ml)**  
**779171 (US)**  
**413408601 (EU)**  
**619590096 (Scandinavia)**



## XPS SYNTHETIC GREASE

- Recommended for marine applications.
- This synthetic grease provides the best wear protection and water resistance available.

**14 oz. (400 g)**  
**779162 (US)**  
**293550010 (EU & Scandinavia)**



## XPS STORAGE OIL

- High-performance fogging oil designed to protect internal engine parts from rust and corrosion.
- It coats engine internals throughout out the whole storage period and is burned away through combustion when engine is started.
- Protects engines during non-use or storage.
- Burns complete upon start up.

**12 oz. (350 g)**  
**779182 (US)**  
**413711600 (EU)**  
**619590094 (Scandinavia)**



## XPS ANTI-CORROSIVE LUBRICANT

- Multipurpose lubricant that can also be used to prevent rust, corrosion and moisture intrusion. It contains extreme pressure additives that work as an all-around lubricant for just about anywhere lubrication is needed.

**12 oz. (340 g)**  
**779168 (US)**  
**293600016 (EU)**  
**619590093 (Scandinavia)**



## XPS SYNTHETIC JET PUMP OIL

- XPS Synthetic Jet Pump Oil uses a unique combination of synthetic base stocks and additives that allow higher loads, superior shear stability and reduced oxidation compared to other synthetics and conventional API GL-5 oils.
- Recommended for use in Sea-Doo jet pump requiring oil.

**6 oz. (170 g)**  
**779221 (US)**  
**293600011 (EU & Scandinavia)**



## TRIPLE-GUARD<sup>+</sup> MARINE GREASE

- This tough grease stays in place and is unaffected by vibration, salt water or cold temperatures.
- Reformulated for high water resistance and improved adhesion to metal.
- Won't swell seals, packing or o-rings.
- Totally waterproof to prevent water wash-off.

**8 oz. (227 g)**  
**296000329**



## ANTI-CORROSION SPRAY

- Heavy, waxy coating specifically designed to protect your engine from rust and corrosion.
- Highly effective against corrosion caused by salt water and salt spray.

**11 oz. (312 g)**  
**219700304**

\* Introduction later in the season



# CHART NEW TERRITORY

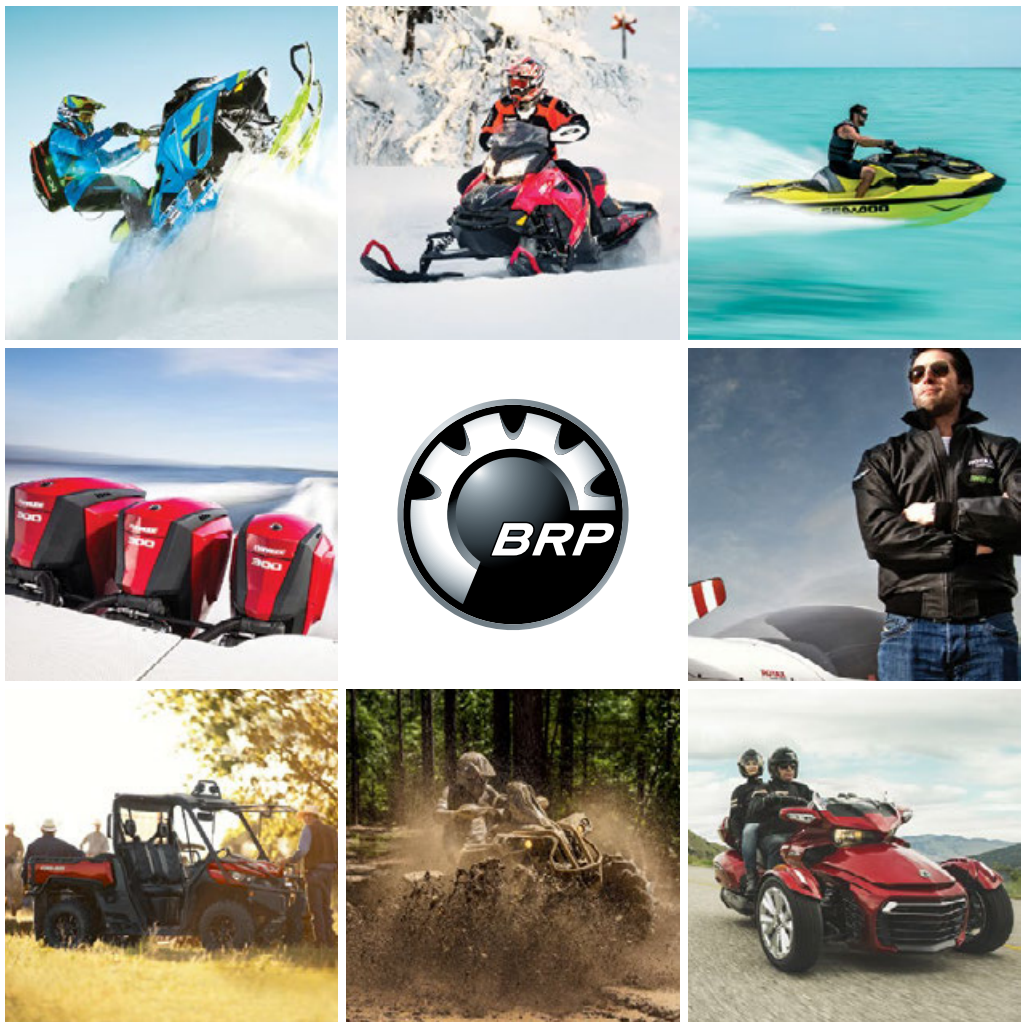
**You know who you are.**

You're always ready to take the plunge and try something new. You are all about performance that goes beyond belief. Which is why you need products that go beyond expectations. XPS oils and lubricants answer the call. Specifically designed to optimize high performance, reliability and long engine life for Sea-Doo personal watercraft, XPS was developed right alongside Rotax engines. Passing the highest levels of testing for an unparalleled experience in all conditions. Begin your journey at your BRP dealer.



**Erminio Iantosca**  
Professional Watercraft Racer  
Winner of Multiple National and World Championships





***ski-doo LYNX SEA-DOO EVINRUDE ROTAX can-am***